



# Corrections and Community Supervision

Under Custody Report:

Profile of Under Custody Population  
As of January 1, 2020

**Profile of Under Custody Population  
As of January 1, 2020**

**Table of Contents**

---

	<u>Page</u>
Table of Contents .....	i
Executive Summary .....	ii
Introduction .....	1
Incarcerated Individual Categories .....	2
 Section 1: Demographic Characteristics	
Sex .....	3
Age .....	4
Race/Ethnic Status .....	5
Region of Commitment .....	6
World Region of Birth.....	9
Marital Status.....	10
Number of Living Children .....	11
Religious Affiliation .....	12
Veteran Status .....	13
Education Level .....	14
Mental Health Service Level .....	15
 Section 2: Criminal History	
Minimum Sentence .....	16
Maximum Sentence .....	18
Commitment Crime .....	20
Felony Sentencing Status.....	22
Prior Adult Criminal Record .....	24
Length of Time Served in Department Custody .....	25
Time to Earliest Release.....	26
Determinate Sentencing .....	27
Facility Security Level.....	28
 Section 3: Changes Over 10 Years.....	31

## Profile of Under Custody Population As of January 1, 2020

### Executive Summary

Characteristics	Category	Incarcerated Individuals	Incarcerated Releasees	Total Under Custody
Population January 1, 2020		43,515	761	44,276
Sex	Male	95.6%	92.1%	95.5%
	Female	4.4%	7.9%	4.5%
Age	Average Age	39.5	37.1	39.4
Race/Ethnic Status	White	24.0%	41.8%	24.3%
	African-American	48.5%	38.5%	48.4%
	Hispanic	24.3%	14.5%	24.2%
Region	New York City	40.9%	20.2%	40.5%
	Suburban New York	10.7%	9.1%	10.7%
	Upstate	48.3%	70.7%	48.7%
World Region of Birth	Foreign Born	9.9%	3.4%	9.8%
Marital Status	Never Married	65.3%	73.3%	65.4%
Living Children	One or more living children	62.5%	63.3%	62.5%
Religious Affiliation	Catholic	18.8%	19.7%	18.8%
	Protestant	22.0%	16.6%	22.0%
	Muslim	13.4%	9.2%	13.4%
	Rastafarian	14.3%	11.2%	14.2%
	None Listed	14.9%	27.3%	15.1%
Military Service Veteran Status	Veteran	4.1%	2.6%	4.1%
Education	Verified High School Credential	57.2%	56.5%	57.2%
OMH Service Level	OMH Level 1 - 4 (on OMH caseload)	23.3%	23.5%	23.3%
Minimum Sentence	Median Minimum (in months)	72.0	26.0	72.0
	Average Minimum (in months)	135.0	38.0	133.3
Maximum Sentence	Median Maximum (in months)	96.0	48.0	96.0
	Average Maximum (in months)	146.5	56.3	144.9
Crime	Violent Felony	67.6%	26.4%	66.9%
	Drug Offenses	13.4%	29.0%	13.7%
	Property/Other	10.5%	31.3%	10.8%
Felony Sentencing Status	First Felony	55.6%	53.7%	55.6%
	Second Felony	40.5%	46.1%	40.6%
	Persistent Felony	3.9%	0.1%	3.9%
Prior Adult Criminal Record	No Prior Arrest	15.9%	10.5%	15.8%
	Prior Prison Term	36.1%	30.8%	36.0%
Time Served in Department Custody	Median time served (in months)	28.1	*	*
	Average time served (in months)	63.2	*	*
Time to Earliest Release Date	Median time (in months)	19.8	*	*
	Average time (in months)	56.3	*	*
Determinate Sentence	Drug Offenses - Determinate	*	*	99.0%
	Violent Felony - Determinate	*	*	72.1%
Facility Security Level	Maximum Security	43.8%	10.4%	43.2%
	Medium Security	48.3%	19.7%	47.9%
	Minimum Security	2.2%	2.6%	2.2%
	Parole Program Facility	0.5%	65.3%	1.6%

\* Not reported

# Profile of Under Custody Population As of January 1, 2020

## INTRODUCTION

### Purpose of the Report

This report presents information on individuals held under Department of Corrections and Community Supervision (DOCCS) custody as of January 1, 2020. It profiles their demographic and criminal history characteristics.

### Population Overview

Starting with the 2012 report in this series, all incarcerated individuals are reported, including those participating in the Alt 90 or Alt 45 programs<sup>1</sup>. In addition, “incarcerated releasees” (individuals under parole supervision who are participating in a program at a DOCCS facility) are included, but reported separately. Most “incarcerated releasees” are housed in parole program facilities, while some are housed in correctional facilities. Similarly, most incarcerated individuals are housed in correctional facilities, while others are housed in parole program facilities. (See next page for a description).

Since the the 2019 report was prepared, there have been some legislatively mandated changes in terminology. Incarcerated individuals were referred to as inmates in prior reports and incarcerated releasees were previously referred to as incarcerated parolees. In the 2019 report, “incarcerated individuals” was used to represent the total custody population.

The table below shows the distribution of the various subgroups within the under custody population. Descriptions of these different subgroups are presented on the next page.

Type of Facility	Incarcerated Individuals	Incarcerated Releasees	Total Custody Population
Correctional Facilities	43,300	264	43,564
Parole Program Facilities	215	497	712
Total	43,515	761	44,276

---

1. Alt 90 cases have been assigned to an alternative 90-day drug treatment program at Willard Drug Treatment Campus (DTC), while Alt 45 cases have been assigned to an alternative 45-day drug treatment program at Edgecombe Residential Treatment Facility. See next page for a more complete description.

## Population Categories

**Incarcerated individuals in correctional facilities** are individuals who have been sentenced to prison (or returned to prison as a result of a parole violation), are not under community supervision, and are incarcerated in a traditional “prison” facility (N=43,300).

**Incarcerated releasees in correctional facilities** are parolees who are under community supervision and have been incarcerated in order to participate in a treatment program. Incarcerated releasees in correctional facilities (N=264) are in one of the following situations: 1) in a reception facility on the way to beginning a treatment program in a parole program facility, 2) in a correctional facility awaiting an outcome hearing by an Administrative Law Judge (ALJ) as a result of being removed from a treatment program at a parole program facility, or 3) are participating in an alternative treatment program due to medical or mental health needs that cannot be met at the designated parole program facility.

**Incarcerated individuals in parole program facilities** are returned parole violators who are participating in an alternative drug treatment program (N=215). These individuals were revoked and given a time assessment by an ALJ that represents a period of time that they must spend in prison. However, in lieu of serving the full amount of time in prison, these individuals were offered the opportunity to participate in a drug treatment program and they have volunteered to do so. If they successfully complete the program (either 90 days at Willard Drug Treatment Campus or 45 days at Edgecombe Residential Treatment Facility), they will be released from incarceration at the completion of the program. If they do not successfully complete the drug treatment program, they must complete the remainder of their time assessment in a correctional facility.

**Incarcerated releasees in parole program facilities** are parolees who are under community supervision and participating in an assigned treatment program at a parole program facility (N=497). Once these incarcerated releasees complete the treatment program, they will be returned to the community to complete their term of community supervision. If these incarcerated releasees do not successfully complete their assigned treatment program, they will be removed from the program and the parole violation process will proceed accordingly.

## Sections of the Report

The first section of this report describes the demographic characteristics of incarcerated individuals and incarcerated releasees. The second section describes the criminal history and custodial status of incarcerated individuals and incarcerated releasees. The third section presents trend information over the last ten years.

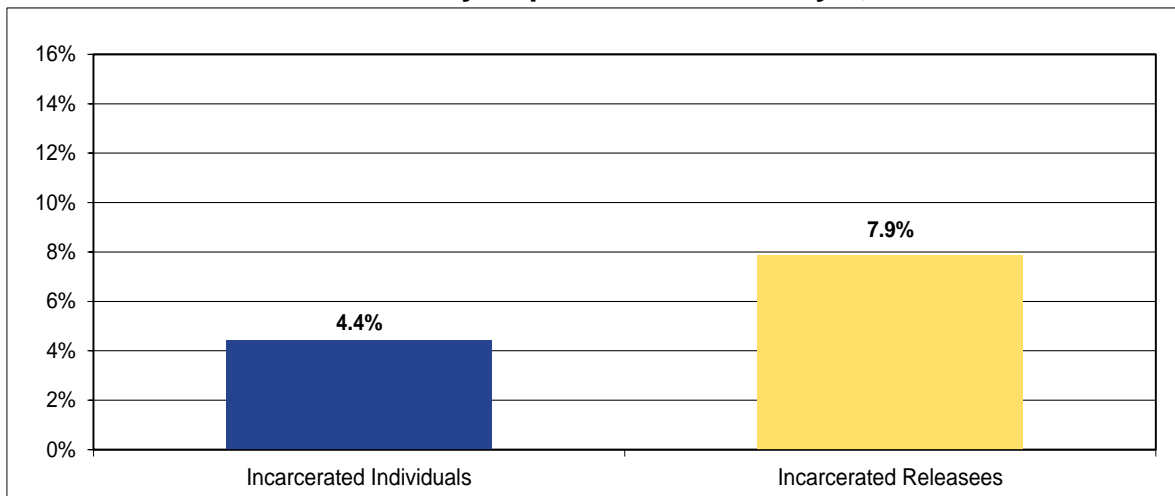
## Section One

### DEMOGRAPHIC CHARACTERISTICS

#### Sex

Of the 44,276 individuals under custody on January 1, 2020, 42,287 (95%) were male and 1,989 (4%) were female. There was a drop of 3,183 (-7%) total individuals under custody since January 1, 2019. The number of male incarcerated individuals decreased by 2,983 (-7%) while female incarcerated individuals decreased by 200 (-9%). There was a decrease of 38 females in the incarcerated releasee population. Females made up a larger proportion of incarcerated releasees (8%) than incarcerated individuals (4%).

**Figure 1. Proportion of Females Under Custody by Incarceration Status; Under Custody Population on January 1, 2020**



**Table 1. Distribution by Sex and Incarceration Status; Under Custody Population on January 1, 2019 and January 1, 2020**

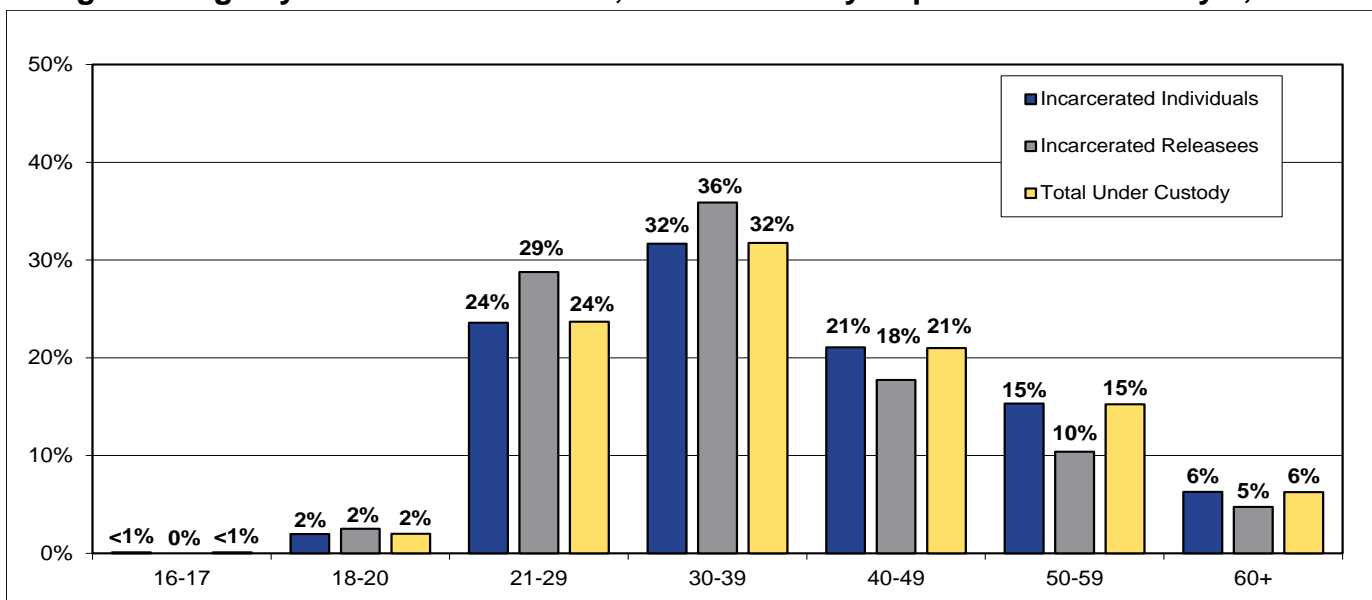
Sex and Incarceration Status	2019	2020	Numeric Change	Percent Change	Percent of Total 2019	Percent of Total 2020
<b>Incarcerated Individuals</b>						
Male	44,553	41,586	-2,967	-6.7%	95.5%	95.6%
Female	2,091	1,929	-162	-7.7%	4.5%	4.4%
Total	46,644	43,515	-3,129	-6.7%	100%	100%
<b>Incarcerated Releasees</b>						
Male	717	701	-16	-2.2%	88.0%	92.1%
Female	98	60	-38	-38.8%	12.0%	7.9%
Total	815	761	-54	-6.6%	100%	100%
<b>Total Under Custody</b>						
Male	45,270	42,287	-2,983	-6.6%	95.4%	95.5%
Female	2,189	1,989	-200	-9.1%	4.6%	4.5%
Total Under Custody	47,459	44,276	-3,183	-6.7%	100%	100%

## Age

The average age of individuals under custody on January 1, 2020 was 39 years old. On average, incarcerated individuals were older (39) than incarcerated releasees (37).

There were 916 individuals under 21 years old. Compared to January 1, 2019, the number of individuals under age 21 decreased by 197 (-18%). Of the 916 individuals under age 21, 36 were 16 or 17 years old. Overall, the number of individuals age 50 and older decreased by 380 (-4%) between January 1, 2019 and January 1, 2020, while the total population declined by 3,183 (-7%). The number and proportion of individuals age 60 or older increased between 2019 and 2020 (from 2,694 or 5.7% to 2,769 or 6.3%).

**Figure 2. Age by Incarceration Status; Under Custody Population on January 1, 2020**



**Table 2. Age; Under Custody Population on January 1, 2020**

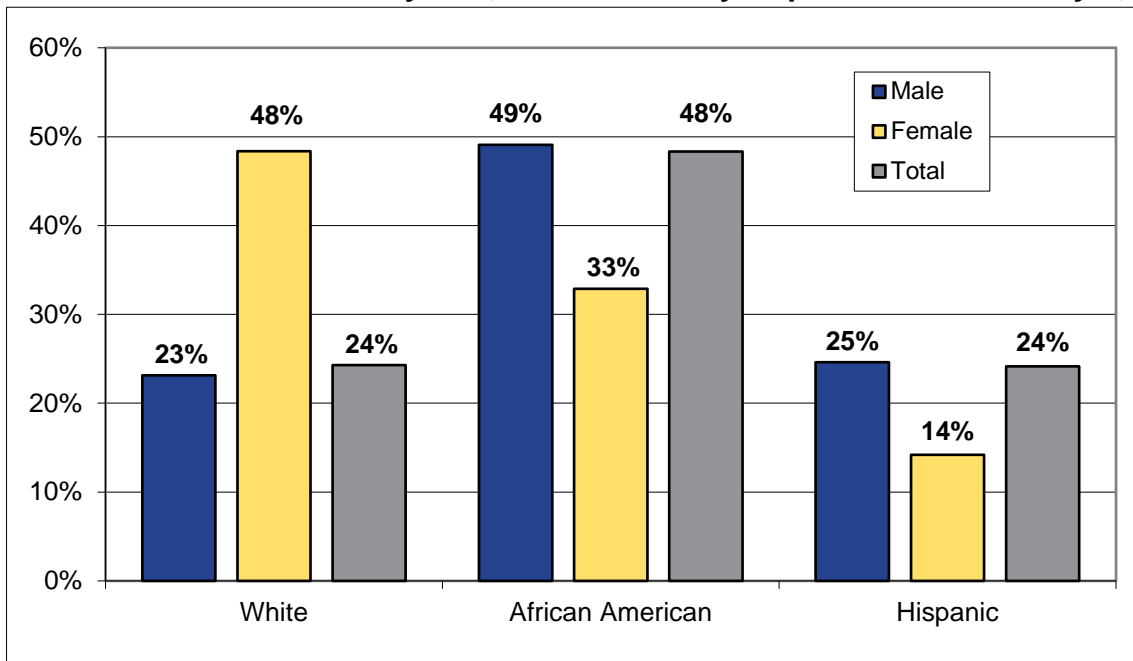
Age by Sex	16-17	18-20	21-29	30-39	40-49	50-59	60+	Total	Average
Male	34	848	9,972	13,330	8,927	6,489	2,687	42,287	39.5
Female	2	32	511	731	373	258	82	1,989	38.0
Total	36	880	10,483	14,061	9,300	6,747	2,769	44,276	39.4
Male	0.1%	2.0%	23.6%	31.5%	21.1%	15.3%	6.4%	100.0%	
Female	0.1%	1.6%	25.7%	36.8%	18.8%	13.0%	4.1%	100.0%	
Total	0.1%	2.0%	23.7%	31.8%	21.0%	15.2%	6.3%	100.0%	
<b>Age by Incarceration Status</b>									
Incarcerated Individuals	36	861	10,264	13,788	9,165	6,668	2,733	43,515	39.5
Incarcerated Releasees	0	19	219	273	135	79	36	761	37.1
Total Under Custody	36	880	10,483	14,061	9,300	6,747	2,769	44,276	39.4
Incarcerated Individuals	0.1%	2.0%	23.6%	31.7%	21.1%	15.3%	6.3%	100.0%	
Incarcerated Releasees	0.0%	2.5%	28.8%	35.9%	17.7%	10.4%	4.7%	100.0%	
Total Under Custody	0.1%	2.0%	23.7%	31.8%	21.0%	15.2%	6.3%	100.0%	

## Race/Ethnic Status

Almost half (48%) of the total incarcerated individuals under custody on January 1, 2020 were African-American, while just under a quarter were Hispanic and just under a quarter identified as White. A larger proportion of the female population was White (48%) compared to males (23%).

A larger proportion of the incarcerated releasee population was White (42%) compared to the incarcerated individual population (24%).

**Figure 3. Race/Ethnic Status by Sex; Under Custody Population on January 1, 2020**



**Table 3. Race/Ethnic Status; Under Custody Population on January 1, 2020**

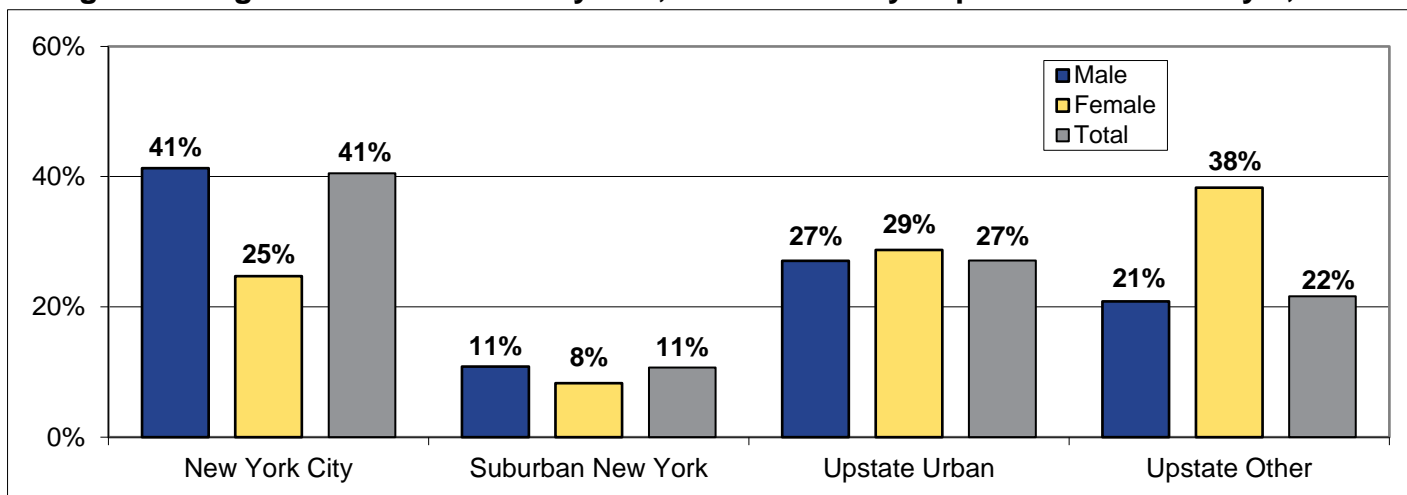
Race/Ethnic Status by Sex	White	African American	Hispanic	Native American	Asian	Other	Unknown	Total
Male	9,785	20,754	10,413	384	247	528	176	42,287
Female	962	654	282	21	14	26	30	1,989
Total	10,747	21,408	10,695	405	261	554	206	44,276
Male	23.1%	49.1%	24.6%	0.9%	0.6%	1.2%	0.4%	100.0%
Female	48.4%	32.9%	14.2%	1.1%	0.7%	1.3%	1.5%	100.0%
Total	24.3%	48.4%	24.2%	0.9%	0.6%	1.3%	0.5%	100.0%
Race/Ethnic by Incarceration Status								
Incarcerated Individuals	10,429	21,115	10,585	391	258	543	194	43,515
Incarcerated Releasees	318	293	110	14	3	11	12	761
Total Under Custody	10,747	21,408	10,695	405	261	554	206	44,276
Incarcerated Individuals	24.0%	48.5%	24.3%	0.9%	0.6%	1.2%	0.4%	100.0%
Incarcerated Releasees	41.8%	38.5%	14.5%	1.8%	0.4%	1.4%	1.6%	100.0%
Total Under Custody	24.3%	48.4%	24.2%	0.9%	0.6%	1.3%	0.5%	100.0%



## Region of Commitment

Forty-one percent (41%) of individuals under custody on January 1, 2020 were committed from New York City and 11% were committed from Suburban New York (Nassau, Rockland, Suffolk, and Westchester counties). Individuals from Upstate counties with a population center of 50,000 inhabitants or more (Albany, Broome, Erie, Monroe, Oneida, Onondaga, Niagara, Rensselaer, and Schenectady counties) comprised 27% of the under custody population. The remaining 22% were sentenced from the other Upstate counties. Incarcerated releasees were less likely than incarcerated individuals to have been committed from New York City (20% vs. 41%) and more likely to have been committed from Upstate Other counties (38% vs. 21%). When compared with males under custody, females under custody were less likely to be committed from New York City (25% vs. 41%) and were more likely to come from Upstate Other Counties (38% vs. 21%).

**Figure 4. Region of Commitment by Sex; Under Custody Population on January 1, 2020**



**Table 4A. Region of Commitment; Under Custody Population on January 1, 2020**

Region by Sex	New York City	Suburban New York	Upstate Urban	Upstate Other	Total*
Male	17,452	4,579	11,444	8,812	42,287
Female	491	165	571	761	1,988
Total	17,943	4,744	12,015	9,573	44,275
Male	41.3%	10.8%	27.1%	20.8%	100.0%
Female	24.7%	8.3%	28.7%	38.3%	100.0%
Total	40.5%	10.7%	27.1%	21.6%	100.0%
Region by Incarceration Status					
Incarcerated Individuals	17,789	4,675	11,764	9,286	43,514
Incarcerated Releasees	154	69	251	287	761
Total Under Custody	17,943	4,744	12,015	9,573	44,275
Incarcerated Individuals	40.9%	10.7%	27.0%	21.3%	100.0%
Incarcerated Releasees	20.2%	9.1%	33.0%	37.7%	100.0%
Total Under Custody	40.5%	10.7%	27.1%	21.6%	100.0%

\* One individual is from out of state, so the total for this table differs from the other tables in this report.

**Table 4B. Region of Commitment by Sex; Under Custody Population on January 1, 2020 (Page 1 of 2)**

County & Region by Sex	Male	Female	Total	Male	Female	Total*
Bronx	2,861	79	2,940	6.8%	4.0%	6.6%
Kings	4,446	100	4,546	10.5%	5.0%	10.3%
New York	6,236	205	6,441	14.7%	10.3%	14.5%
Queens	3,264	84	3,348	7.7%	4.2%	7.6%
Richmond	645	23	668	1.5%	1.2%	1.5%
NYC Total	17,452	491	17,943	41.3%	24.7%	40.5%
Nassau	1,385	49	1,434	3.3%	2.5%	3.2%
Rockland	338	14	352	0.8%	0.7%	0.8%
Suffolk	1,740	65	1,805	4.1%	3.3%	4.1%
Westchester	1,116	37	1,153	2.6%	1.9%	2.6%
Suburban NYC Total	4,579	165	4,744	10.8%	8.3%	10.7%
Albany	1,456	73	1,529	3.4%	3.7%	3.5%
Broome	709	60	769	1.7%	3.0%	1.7%
Erie	2,172	107	2,279	5.1%	5.4%	5.1%
Monroe	2,772	133	2,905	6.6%	6.7%	6.6%
Niagara	585	29	614	1.4%	1.5%	1.4%
Oneida	873	46	919	2.1%	2.3%	2.1%
Onondaga	1,691	72	1,763	4.0%	3.6%	4.0%
Rensselaer	370	15	385	0.9%	0.8%	0.9%
Schenectady	816	36	852	1.9%	1.8%	1.9%
Upstate Urban Total	11,444	571	12,015	27.1%	28.7%	27.1%
Allegany	59	10	69	0.1%	0.5%	0.2%
Cattaraugus	157	14	171	0.4%	0.7%	0.4%
Cayuga	260	33	293	0.6%	1.7%	0.7%
Chautauqua	219	10	229	0.5%	0.5%	0.5%
Chemung	286	19	305	0.7%	1.0%	0.7%
Chenango	122	14	136	0.3%	0.7%	0.3%
Clinton	338	46	384	0.8%	2.3%	0.9%
Columbia	138	11	149	0.3%	0.6%	0.3%
Cortland	133	9	142	0.3%	0.5%	0.3%
Delaware	98	12	110	0.2%	0.6%	0.2%
Dutchess	674	40	714	1.6%	2.0%	1.6%
Essex	88	11	99	0.2%	0.6%	0.2%
Franklin	131	20	151	0.3%	1.0%	0.3%
Fulton	151	10	161	0.4%	0.5%	0.4%

**Table 4B. Region of Commitment by Sex; Under Custody Population on January 1, 2020 (Page 2 of 2)**

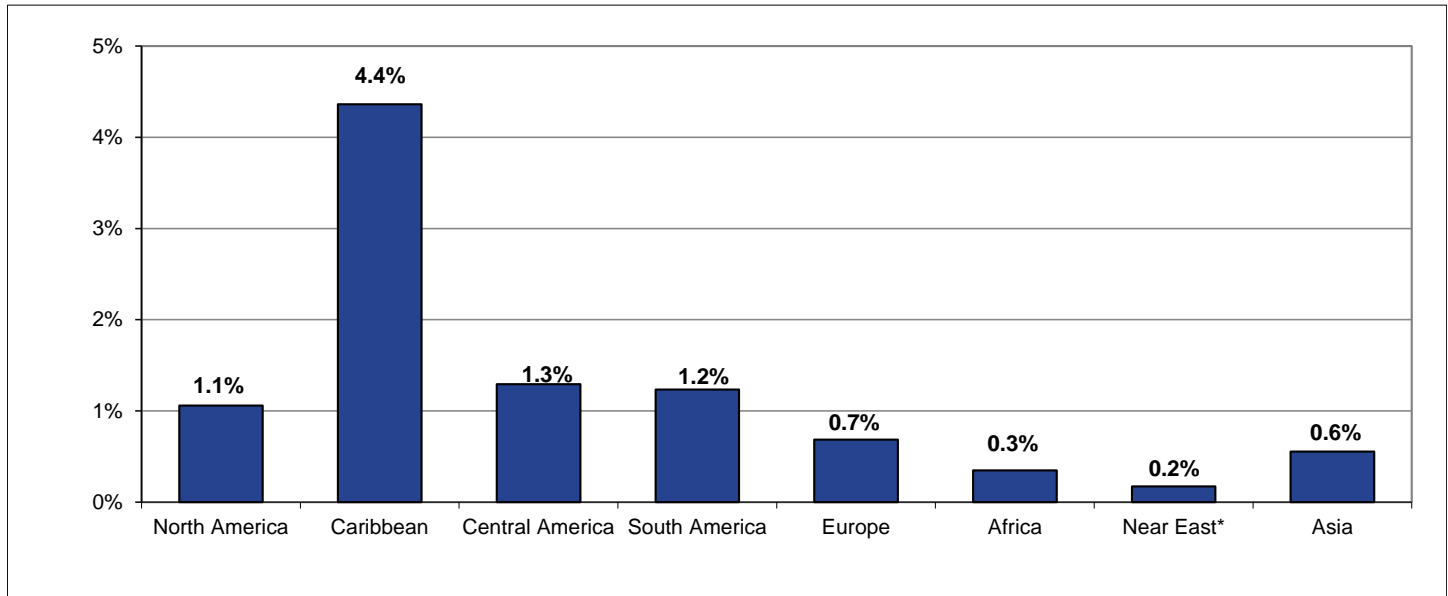
County & Region by Sex	Male	Female	Total	Male	Female	Total*
Genesee	223	14	237	0.5%	0.7%	0.5%
Greene	108	5	113	0.3%	0.3%	0.3%
Hamilton	6	1	7	0.0%	0.1%	0.0%
Herkimer	111	11	122	0.3%	0.6%	0.3%
Jefferson	206	29	235	0.5%	1.5%	0.5%
Lewis	63	7	70	0.1%	0.4%	0.2%
Livingston	142	14	156	0.3%	0.7%	0.4%
Madison	136	6	142	0.3%	0.3%	0.3%
Montgomery	154	7	161	0.4%	0.4%	0.4%
Ontario	395	36	431	0.9%	1.8%	1.0%
Orange	936	58	994	2.2%	2.9%	2.2%
Orleans	108	16	124	0.3%	0.8%	0.3%
Oswego	302	18	320	0.7%	0.9%	0.7%
Otsego	123	11	134	0.3%	0.6%	0.3%
Putnam	71	2	73	0.2%	0.1%	0.2%
St Lawrence	291	37	328	0.7%	1.9%	0.7%
Saratoga	314	30	344	0.7%	1.5%	0.8%
Schoharie	41	4	45	0.1%	0.2%	0.1%
Schuyler	43	6	49	0.1%	0.3%	0.1%
Seneca	68	9	77	0.2%	0.5%	0.2%
Steuben	310	33	343	0.7%	1.7%	0.8%
Sullivan	325	20	345	0.8%	1.0%	0.8%
Tioga	80	7	87	0.2%	0.4%	0.2%
Tomkins	131	7	138	0.3%	0.4%	0.3%
Ulster	485	21	506	1.1%	1.1%	1.1%
Warren	257	35	292	0.6%	1.8%	0.7%
Washington	207	28	235	0.5%	1.4%	0.5%
Wayne	156	8	164	0.4%	0.4%	0.4%
Wyoming	100	14	114	0.2%	0.7%	0.3%
Yates	66	8	74	0.2%	0.4%	0.2%
Upstate Other Total	8,812	761	9,573	20.8%	38.3%	21.6%
Total Under Custody	42,287	1,988	44,275	100.0%	100.0%	100.0%

\* One individual is from out of state, so the total for this table differs from the other tables in this report.

## World Region of Birth

Eighty-nine percent (89%) of individuals under custody born in the United States or a United States Territory. An additional 10% (or 4,318) reported birth in a foreign country. Of the individuals who reported birth in a foreign country, 45% (or 1,931) were from one of the island nations in the Caribbean. Among incarcerated individuals, 10% (or 4,292) were foreign-born while only 3% (or 26) of incarcerated releasees were foreign-born.

**Figure 5. World Region of Birth; Under Custody Population on January 1, 2020**



**Table 5. World Region of Birth; Under Custody Population on January 1, 2020**

World Region by Sex	North America	Caribbean	Central America	South America	Europe	Africa	Near East*	Asia	South Pacific	Subtotal Outside US	United States**	Unknown	Total
Male	460	1,874	561	527	278	154	75	237	19	4,185	37,696	406	42,287
Female	9	57	11	20	25	0	1	8	2	133	1,834	22	1,989
<b>Total</b>	<b>469</b>	<b>1,931</b>	<b>572</b>	<b>547</b>	<b>303</b>	<b>154</b>	<b>76</b>	<b>245</b>	<b>21</b>	<b>4,318</b>	<b>39,530</b>	<b>428</b>	<b>44,276</b>
Male	1.1%	4.4%	1.3%	1.2%	0.7%	0.4%	0.2%	0.6%	0.0%	9.9%	89.1%	1.0%	100.0%
Female	0.5%	2.9%	0.6%	1.0%	1.3%	0.0%	0.1%	0.4%	0.1%	6.7%	92.2%	1.1%	100.0%
<b>Total</b>	<b>1.1%</b>	<b>4.4%</b>	<b>1.3%</b>	<b>1.2%</b>	<b>0.7%</b>	<b>0.3%</b>	<b>0.2%</b>	<b>0.6%</b>	<b>0.0%</b>	<b>9.8%</b>	<b>89.3%</b>	<b>1.0%</b>	<b>100.0%</b>
<b>World Region of Birth by Incarceration Status</b>													
Incarcerated Individuals	467	1,922	570	543	301	153	75	241	20	4,292	38,819	404	43,515
Incarcerated Releasees	2	9	2	4	2	1	1	4	1	26	711	24	761
<b>Total Under Custody</b>	<b>469</b>	<b>1,931</b>	<b>572</b>	<b>547</b>	<b>303</b>	<b>154</b>	<b>76</b>	<b>245</b>	<b>21</b>	<b>4,318</b>	<b>39,530</b>	<b>428</b>	<b>44,276</b>
Incarcerated Individuals	1.1%	4.4%	1.3%	1.2%	0.7%	0.4%	0.2%	0.6%	0.0%	9.9%	89.2%	0.9%	100.0%
Incarcerated Releasees	0.3%	1.2%	0.3%	0.5%	0.3%	0.1%	0.1%	0.5%	0.1%	3.4%	93.4%	3.2%	100.0%
<b>Total Under Custody</b>	<b>1.1%</b>	<b>4.4%</b>	<b>1.3%</b>	<b>1.2%</b>	<b>0.7%</b>	<b>0.3%</b>	<b>0.2%</b>	<b>0.6%</b>	<b>0.0%</b>	<b>9.8%</b>	<b>89.3%</b>	<b>1.0%</b>	<b>100.0%</b>

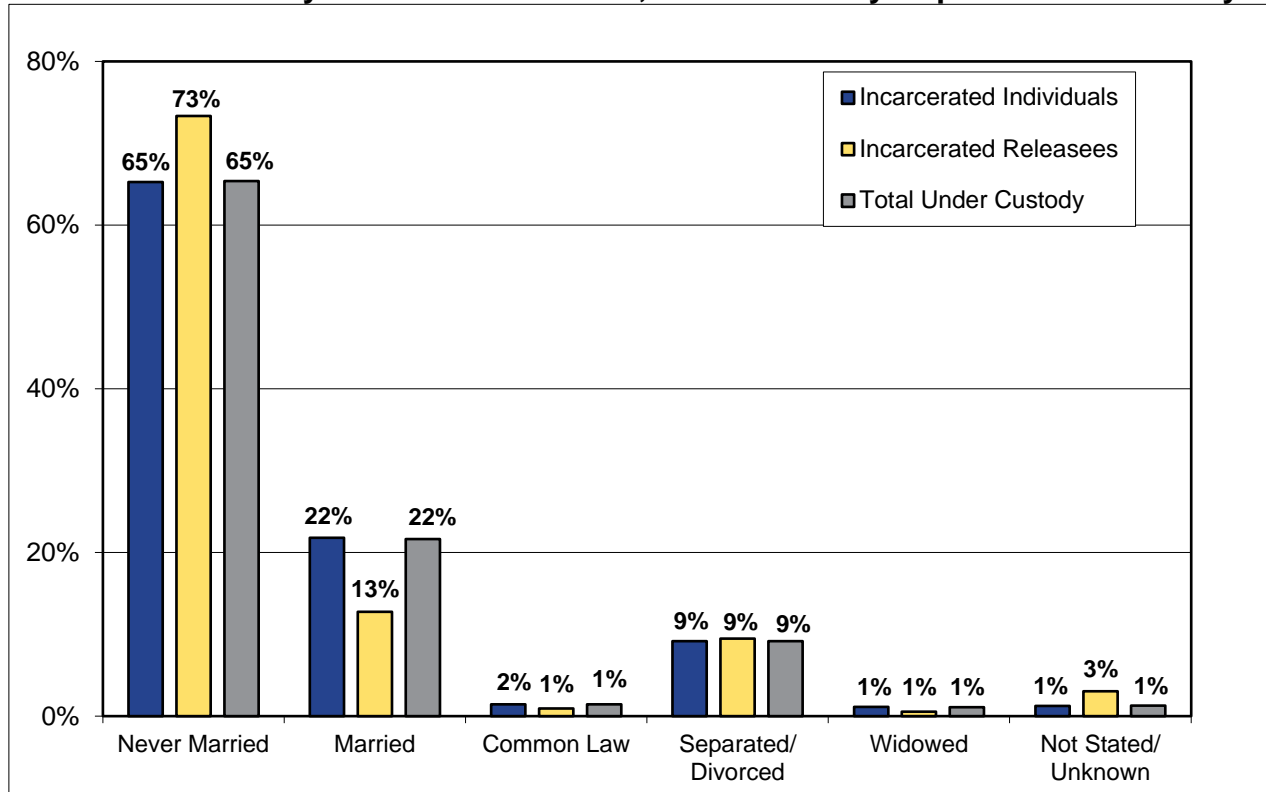
\* Near East includes Bahrain, Cyprus, Egypt, Iran, Iraq, Israel, Jordan, Kuwait, Lebanon, Oman and Muscat, Qatar, Saudi Arabia, South Yemen, Syria, Turkey, United Arab Emirates and Yemen.

\*\* Includes individuals committed from United States Territories.

## Marital Status

Just under two-thirds (65%) of the incarcerated individuals reported never being married. The proportion was higher (73%) for incarcerated releasees.

**Figure 6. Marital Status by Incarceration Status; Under Custody Population on January 1, 2020**



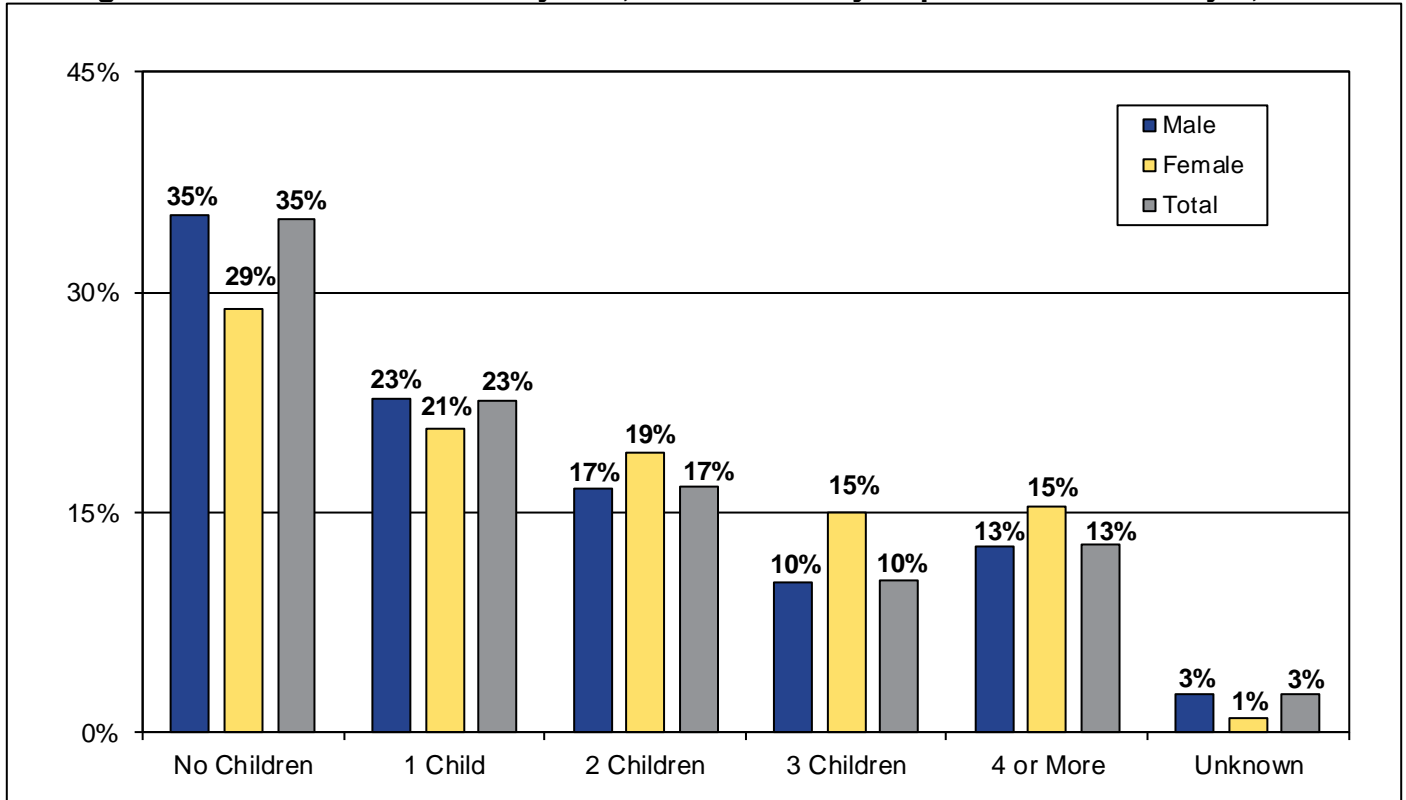
**Table 6. Marital Status; Under Custody Population on January 1, 2020**

Marital Status by Sex	Never Married	Married	Common Law	Separated/Divorced	Widowed	Not Stated/Unknown	Total
Male	27,680	9,208	634	3,787	432	546	42,287
Female	1,273	365	4	274	54	19	1,989
<b>Total</b>	<b>28,953</b>	<b>9,573</b>	<b>638</b>	<b>4,061</b>	<b>486</b>	<b>565</b>	<b>44,276</b>
Male	65.5%	21.8%	1.5%	9.0%	1.0%	1.3%	100.0%
Female	64.0%	18.4%	0.2%	13.8%	2.7%	1.0%	100.0%
<b>Total</b>	<b>65.4%</b>	<b>21.6%</b>	<b>1.4%</b>	<b>9.2%</b>	<b>1.1%</b>	<b>1.3%</b>	<b>100.0%</b>
<b>Marital Status by Incarceration Status</b>							
Incarcerated Individuals	28,395	9,476	631	3,989	482	542	43,515
Incarcerated Releasees	558	97	7	72	4	23	761
<b>Total Under Custody</b>	<b>28,953</b>	<b>9,573</b>	<b>638</b>	<b>4,061</b>	<b>486</b>	<b>565</b>	<b>44,276</b>
Incarcerated Individuals	65.3%	21.8%	1.5%	9.2%	1.1%	1.2%	100.0%
Incarcerated Releasees	73.3%	12.7%	0.9%	9.5%	0.5%	3.0%	100.0%
<b>Total Under Custody</b>	<b>65.4%</b>	<b>21.6%</b>	<b>1.4%</b>	<b>9.2%</b>	<b>1.1%</b>	<b>1.3%</b>	<b>100.0%</b>

## Number of Living Children

Among individuals under custody reporting parental status, the majority (63%) reported that they had at least one living child at the time of admission to the Department. Women were more likely than men to report having a living child (70% vs. 62%).

**Figure 7. Number of Children by Sex; Under Custody Population on January 1, 2020**



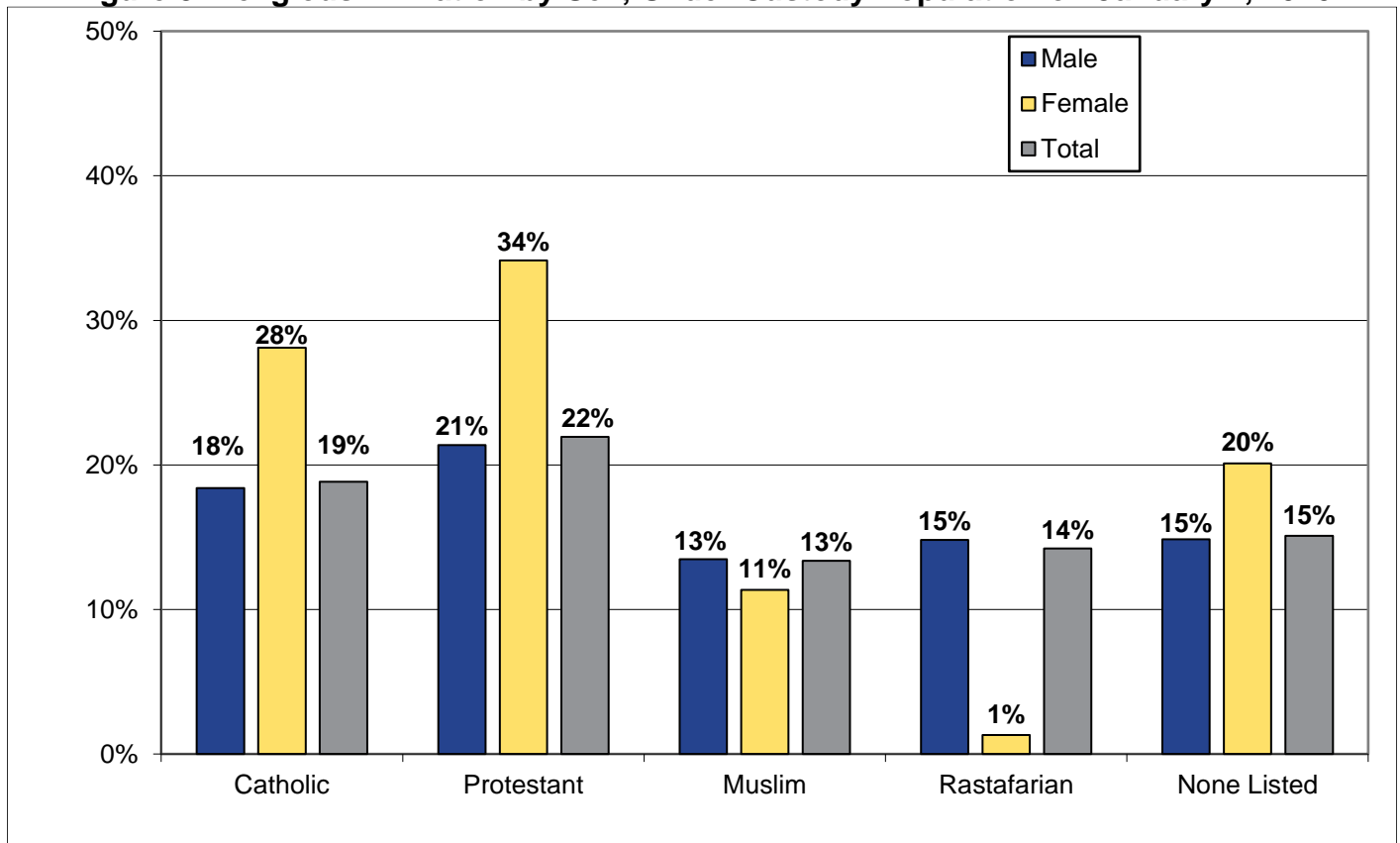
**Table 7. Number of Children; Under Custody Population on January 1, 2020**

Number of Children by Sex	No Children	1 Child	2 Children	3 Children	4 or More	Unknown	Total
Male	14,901	9,608	7,027	4,300	5,342	1,109	42,287
Female	575	412	378	297	307	20	1,989
Total	15,476	10,020	7,405	4,597	5,649	1,129	44,276
Male	35.2%	22.7%	16.6%	10.2%	12.6%	2.6%	100.0%
Female	28.9%	20.7%	19.0%	14.9%	15.4%	1.0%	100.0%
Total	35.0%	22.6%	16.7%	10.4%	12.8%	2.5%	100.0%
Number of Children by Incarceration Status							
Incarcerated Individuals	15,229	9,865	7,255	4,509	5,560	1,097	43,515
Incarcerated Releasees	247	155	150	88	89	32	761
Total Under Custody	15,476	10,020	7,405	4,597	5,649	1,129	44,276
Incarcerated Individuals	35.0%	22.7%	16.7%	10.4%	12.8%	2.5%	100.0%
Incarcerated Releasees	32.5%	20.4%	19.7%	11.6%	11.7%	4.2%	100.0%
Total Under Custody	35.0%	22.6%	16.7%	10.4%	12.8%	2.5%	100.0%

## Religious Affiliation

Eighty-five percent (85%) of individuals under custody reported religious affiliation. Nineteen percent (19%) were Catholic, 22% were Protestant, 13% were Muslim, 14% were Rastafarian, 17% reported another faith (Nation of Islam, Jewish, Native American, Greek Orthodox, and Other), and 15% did not report affiliation with a religious faith.

**Figure 8. Religious Affiliation by Sex; Under Custody Population on January 1, 2020**



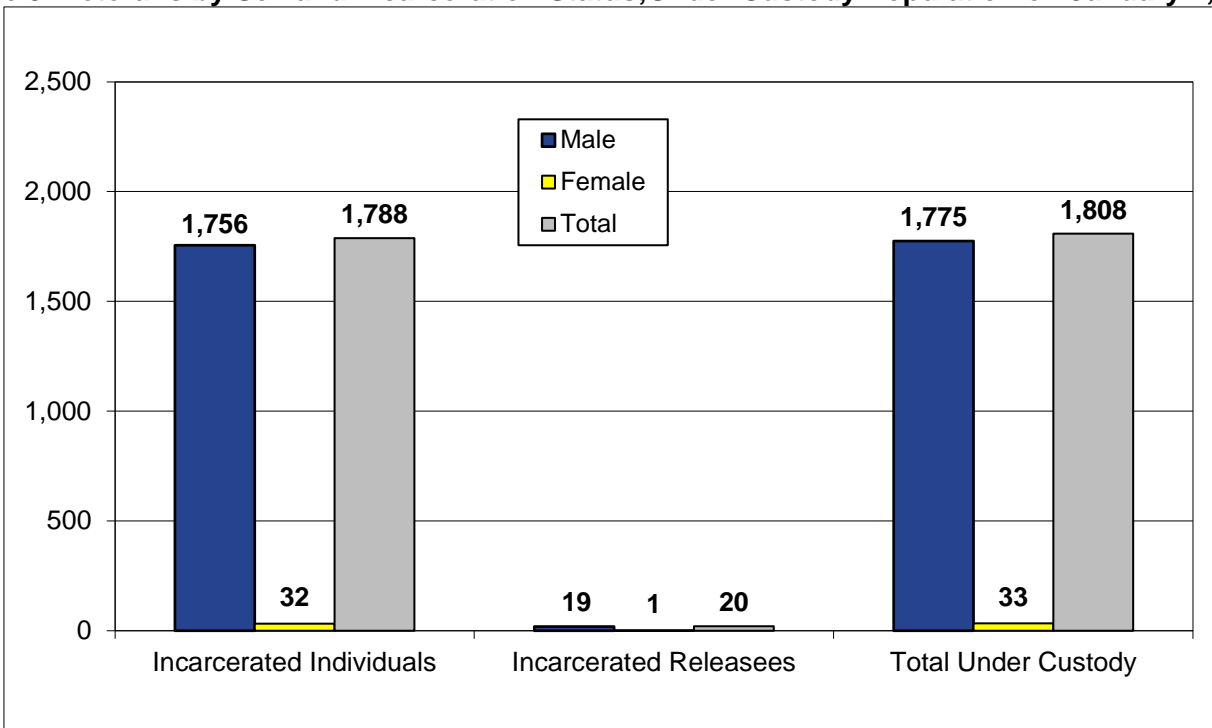
**Table 8. Religious Affiliation; Under Custody Population on January 1, 2020**

Religious Affiliation by Sex	Catholic	Protestant	Muslim	Rasta-farian	Jewish	Nation of Islam	Native American	Greek Orthodox	Other	None Listed	Total
Male	7,777	9,040	5,696	6,267	2,667	1,587	388	38	2,542	6,285	42,287
Female	559	679	226	26	34	10	18	2	35	400	1,989
Total	8,336	9,719	5,922	6,293	2,701	1,597	406	40	2,577	6,685	44,276
Male	18.4%	21.4%	13.5%	14.8%	6.3%	3.8%	0.9%	0.1%	6.0%	14.9%	100.0%
Female	28.1%	34.1%	11.4%	1.3%	1.7%	0.5%	0.9%	0.1%	1.8%	20.1%	100.0%
Total	18.8%	22.0%	13.4%	14.2%	6.1%	3.6%	0.9%	0.1%	5.8%	15.1%	100.0%
Religious Affiliation by Incarceration Status											
Incarcerated Individuals	8,186	9,593	5,852	6,208	2,627	1,585	400	40	2,547	6,477	43,515
Incarcerated Releasees	150	126	70	85	74	12	6	0	30	208	761
Total Under Custody	8,336	9,719	5,922	6,293	2,701	1,597	406	40	2,577	6,685	44,276
Incarcerated Individuals	18.8%	22.0%	13.4%	14.3%	6.0%	3.6%	0.9%	0.1%	5.9%	14.9%	100.0%
Incarcerated Releasees	19.7%	16.6%	9.2%	11.2%	9.7%	1.6%	0.8%	0.0%	3.9%	27.3%	100.0%
Total Under Custody	18.8%	22.0%	13.4%	14.2%	6.1%	3.6%	0.9%	0.1%	5.8%	15.1%	100.0%

## Veteran Status

Of the 44,276 individuals under custody on January 1, 2020, 4% (1,808) were reported as verified veterans. Only 33 veterans were female. Veteran status is verified through a data match with the Veteran's Administration (VA) or verified possession of a DD214 form.

**Figure 9. Veterans by Sex and Incarceration Status; Under Custody Population on January 1, 2020**



**Table 9. Veteran Status; Under Custody Population on January 1, 2020**

Veteran Status by Incarceration Status	Male			Female			Total		
	Non Veteran	Veteran	Total	Non Veteran	Veteran	Total	Non Veteran	Veteran	Total
Incarcerated Individuals	39,830	1,756	41,586	1,897	32	1,929	41,727	1,788	43,515
Incarcerated Releasees	682	19	701	59	1	60	741	20	761
Total Under Custody	40,512	1,775	42,287	1,956	33	1,989	42,468	1,808	44,276
Incarcerated Individuals	95.8%	4.2%	100.0%	98.3%	1.7%	100.0%	95.9%	4.1%	100.0%
Incarcerated Releasees	97.3%	2.7%	100.0%	98.3%	1.7%	100.0%	97.4%	2.6%	100.0%
Total Under Custody	95.8%	4.2%	100.0%	98.3%	1.7%	100.0%	95.9%	4.1%	100.0%

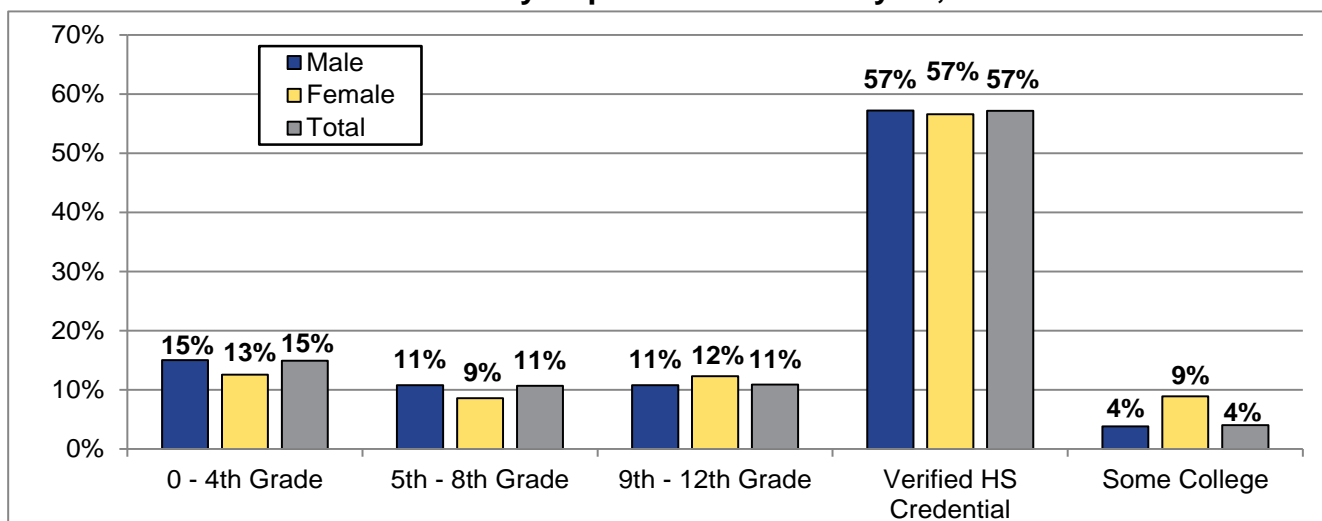


## Education Level

The Department's education program objective is to encourage every individual under custody to earn a high school equivalency diploma while incarcerated. Testing and educational programming are used to track the academic level of individuals under custody in reading and mathematics. In order to take the high school equivalency examination, the Department requires individuals under custody to take tests demonstrating at least a ninth grade level in reading and mathematics. Data reflects results of the most recent tests.

Fifteen percent (15%) of individuals under custody had a tested reading score at the 0 – 4<sup>th</sup> Grade level, 11% at 5<sup>th</sup> – 8<sup>th</sup> Grade level, 11% at the 9<sup>th</sup> – 12<sup>th</sup> Grade level (but no verified high school or equivalency diploma), 57% had a verified high school or equivalency diploma and 4% had some college or a college degree. Female individuals under custody had slightly higher levels of education.

**Figure 10. Reading Score Grade Level and HS Diploma Status by Sex: Under Custody Population on January 18, 2020**



**Table 10. Reading Score Grade Level & HS Diploma Status; UC Population January 18, 2020**

Grade Level based on Tested Reading Score	0 - 4th Grade	5th - 8th Grade	9th - 12th Grade	Verified HS Credential	Some College	Data Unavailable	Total
Male	6,307	4,511	4,527	23,996	1,586	1,022	41,949
Female	245	167	239	1,103	173	22	1,949
Total*	6,552	4,678	4,766	25,099	1,759	1,044	43,898
Male	15.0%	10.8%	10.8%	57.2%	3.8%	2.4%	100.0%
Female	12.6%	8.5%	12.3%	56.6%	8.9%	1.1%	100.0%
Total	14.9%	10.6%	10.9%	57.2%	4.0%	2.4%	100.0%
<b>Reading Score Grade Level by Incarceration Status</b>							
Incarcerated Individuals	6,458	4,592	4,672	24,675	1,747	1,003	43,147
Incarcerated Releasees	94	86	94	424	12	41	751
Total Under Custody	6,552	4,678	4,766	25,099	1,759	1,044	43,898
Incarcerated Individuals	15.0%	10.6%	10.8%	57.2%	4.1%	2.3%	100.0%
Incarcerated Releasees	12.5%	11.5%	12.5%	56.5%	1.6%	5.4%	100.0%
Total Under Custody	14.9%	10.7%	10.8%	57.2%	4.0%	2.4%	100.0%

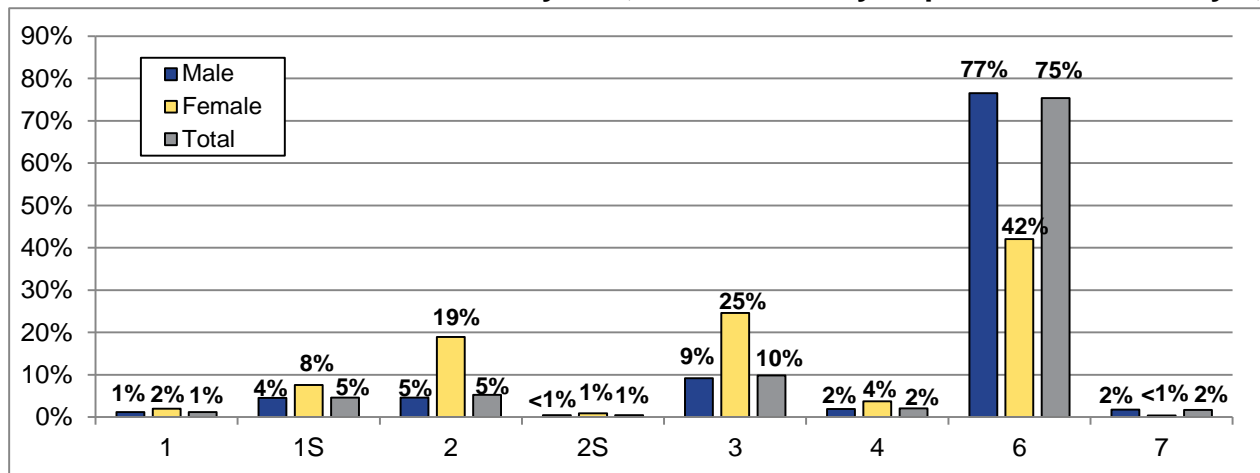
\*Data used from Education Data Files on January 18, 2020. Totals do not equal January 1, 2020 totals.

## Mental Health Service Level

The NYS Office of Mental Health (OMH) provides mental health diagnostic and treatment services to individuals in DOCCS' custody. OMH staff classify individuals according to the mental health service level needed. Individuals who may need mental health treatment services are classified from level 1 through level 4, with 1 indicating the most serious mental health diagnoses and 4 the least serious. Individuals with a Level 6 have been assessed by OMH staff with no mental health services required and level 7 individuals under custody have not yet been assessed. The "S" label in Table 11 indicates Serious Mental Illness (SMI) and the OMH level numbers indicate the level of OMH services that must be available at the facility where the individual is housed.

Twenty-three percent (23%) of individuals under custody had an OMH service level of 1 – 4, indicating they were on the OMH caseload, while 75% had a service level classification of 6 (no mental health services required). Women were much more likely than men to have an OMH service level classification of 1 – 4 (58% and 22%, respectively).

**Figure 11. Mental Health Service Level by Sex; Under Custody Population on January 1, 2020**



**Table 11. OMH Service Level and SMI Status; Under Custody Population on January 1, 2020**

OMH Service Level by Sex	1	1S	2	2S	3	4	6	7	Total*
Male	490	1,893	1,942	184	3,866	812	32,354	745	42,286
Female	39	151	376	17	489	74	836	7	1,989
Total	529	2,044	2,318	201	4,355	886	33,190	752	44,275
Male	1.2%	4.5%	4.6%	0.4%	9.1%	1.9%	76.5%	1.8%	100.0%
Female	2.0%	7.6%	18.9%	0.9%	24.6%	3.7%	42.0%	0.4%	100.0%
Total	1.2%	4.6%	5.2%	0.5%	9.8%	2.0%	75.4%	1.7%	100.0%
OMH Service Level and SMI Status by Incarceration Status									
Incarcerated Individuals	527	2,031	2,254	201	4,268	873	32,615	745	43,514
Incarcerated Releasees	2	13	64	0	87	13	575	7	761
Total Under Custody	529	2,044	2,318	201	4,355	886	33,190	752	44,275
Incarcerated Individuals	1.2%	4.6%	5.2%	0.5%	9.8%	2.0%	75.0%	1.7%	100.0%
Incarcerated Releasees	0.3%	1.7%	8.4%	0.0%	11.4%	1.7%	75.6%	0.9%	100.0%
Total Under Custody	1.2%	4.6%	5.2%	0.5%	9.8%	2.0%	75.0%	1.7%	100.0%

\*1 missing case

## Section Two

### CRIMINAL HISTORY

#### Minimum Sentence

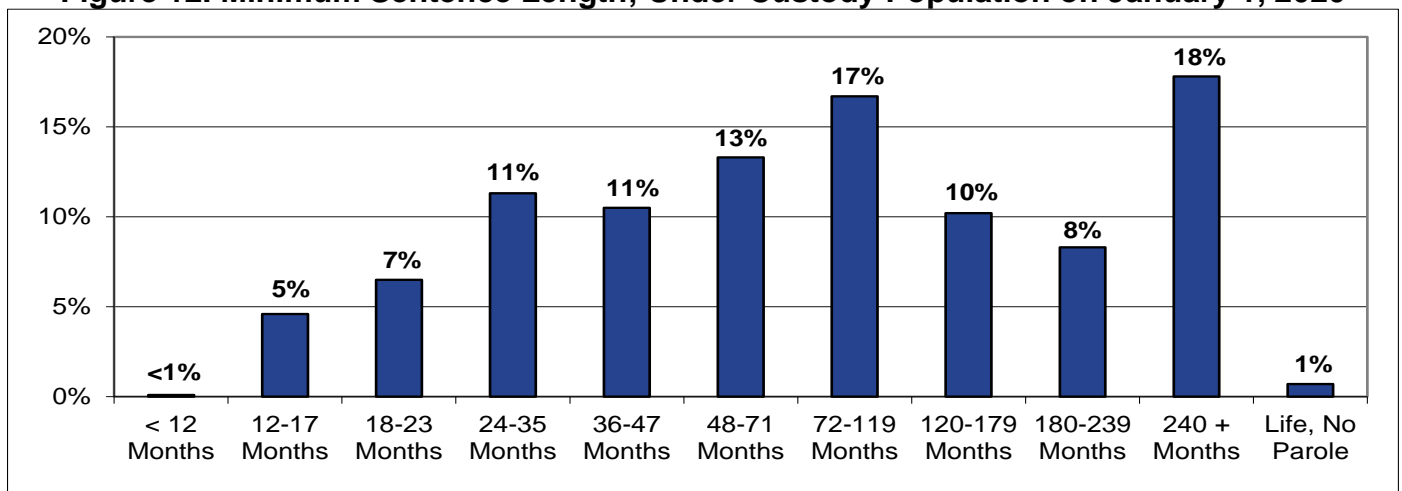
Minimum sentence represents the aggregate minimum sentence associated with the crime of commitment. Minimum sentence is independent of time remaining to serve, so individuals previously released and returned to custody for a parole violation are categorized based on original minimum sentence, not the time to be served due to the parole violation.

Current sentencing laws in New York require an individual convicted of certain crimes to receive a determinate sentence. Determinate sentences require an individual to serve a minimum term of 6/7 years of the determinate sentence imposed by the judge before being eligible for release. An individual committed for a crime not designated as having a determinate sentence has a minimum sentence set by the court.

Overall, the median minimum sentence for individuals under custody was 6 years (72 months)<sup>2</sup>. However, the average minimum sentence length was over eleven years, reflecting the influence of lengthy minimum terms of many offenders. Over one-third (37%) were serving minimum sentences of 10 years or more.

As of January 1, 2020, there were 303 individuals under custody who were serving sentences of “Life Without Parole”. In calculating the average minimum sentence length, “Life Without Parole” cases were given a value of 45 years or 540 months.

**Figure 12. Minimum Sentence Length; Under Custody Population on January 1, 2020**



**Table 12A. Minimum Sentence; Under Custody Population on January 1, 2020**

Minimum Sentence	< 12 Months	12-17 Months	18-23 Months	24-35 Months	36-47 Months	48-71 Months	72-119 Months	120-179 Months	180-239 Months	240+ Months	Life, No Parole	Total
Total	66	2,017	2,895	4,983	4,650	5,876	7,408	4,515	3,672	7,891	303	44,276
Under Custody	0.1%	4.6%	6.5%	11.3%	10.5%	13.3%	16.7%	10.2%	8.3%	17.8%	0.7%	100.0%

<sup>2</sup> The median is the middle point between the number of instances of greater value and the number of instances of lesser value. The median is less subject to the influence of extreme values than is the average and is preferred by some users for this reason.

**Table 12B. Minimum Sentence; Under Custody Population on January 1, 2020**

Minimum Sentence by Sex - Incarcerated Individuals	Male	Female	Total	Male	Female	Total
< 12 Months	50	11	61	0.1%	0.6%	0.1%
12-17 Months	1,680	208	1,888	4.0%	10.8%	4.3%
18-23 Months	2,551	210	2,761	6.1%	10.9%	6.3%
24-35 Months	4,457	315	4,772	10.7%	16.3%	11.0%
36-47 Months	4,284	256	4,540	10.3%	13.3%	10.4%
48-71 Months	5,515	275	5,790	13.3%	14.3%	13.3%
72-119 Months	7,123	227	7,350	17.1%	11.8%	16.9%
120-179 Months	4,359	137	4,496	10.5%	7.1%	10.3%
180-239 Months	3,552	113	3,665	8.5%	5.9%	8.4%
240 + Months	7,723	166	7,889	18.6%	8.6%	18.1%
Life, No Parole	292	11	303	0.7%	0.6%	0.7%
Total Incarcerated Individuals	41,586	1,929	43,515	100.0%	100.0%	100.0%
Minimum Sentence by Sex - Incarcerated Releasees	Male	Female	Total	Male	Female	Total
< 12 Months	3	2	5	0.4%	3.3%	0.7%
12-17 Months	106	23	129	15.1%	38.3%	17.0%
18-23 Months	123	11	134	17.5%	18.3%	17.6%
24-35 Months	197	14	211	28.1%	23.3%	27.7%
36-47 Months	103	7	110	14.7%	11.7%	14.5%
48-71 Months	84	2	86	12.0%	3.3%	11.3%
72-119 Months	57	1	58	8.1%	1.7%	7.6%
120-179 Months	19	0	19	2.7%	0.0%	2.5%
180-239 Months	7	0	7	1.0%	0.0%	0.9%
240 + Months	2	0	2	0.3%	0.0%	0.3%
Life, No Parole	0	0	0	0.0%	0.0%	0.0%
Total Incarcerated Releasees	701	60	761	100.0%	100.0%	100.0%
Total Under Custody	42,287	1,989	44,276	95.5%	4.5%	100.0%
Average and Median Minimum Sentence (in months)	Male Average	Female Average	Total Average	Male Median	Female Median	Total Median
Total Incarcerated Individuals	137.4	82.9	135.0	79.0	42.0	72.0
Total Incarcerated Releasees	39.3	23.0	38.0	30.0	21.0	26.0
Total Under Custody	135.8	81.1	133.3	73.0	41.0	72.0

As can be seen in Table 12B above, the median minimum sentence for incarcerated individuals was 72 months. There was a large difference between male incarcerated individuals, whose median minimum sentence was 79 months, and female incarcerated individuals, whose median minimum was 42 months.

For incarcerated releasees, the median minimum sentence was 26 months. Male incarcerated releasees had a median minimum sentence of 30 months, while female incarcerated releasees had a median minimum of 21 months. In general, incarcerated releasees have shorter minimum and maximum sentences than incarcerated individuals committed to state prison. Overall, 11% of incarcerated individuals had a minimum sentence of less than 2 years compared with 35% of incarcerated releasees.

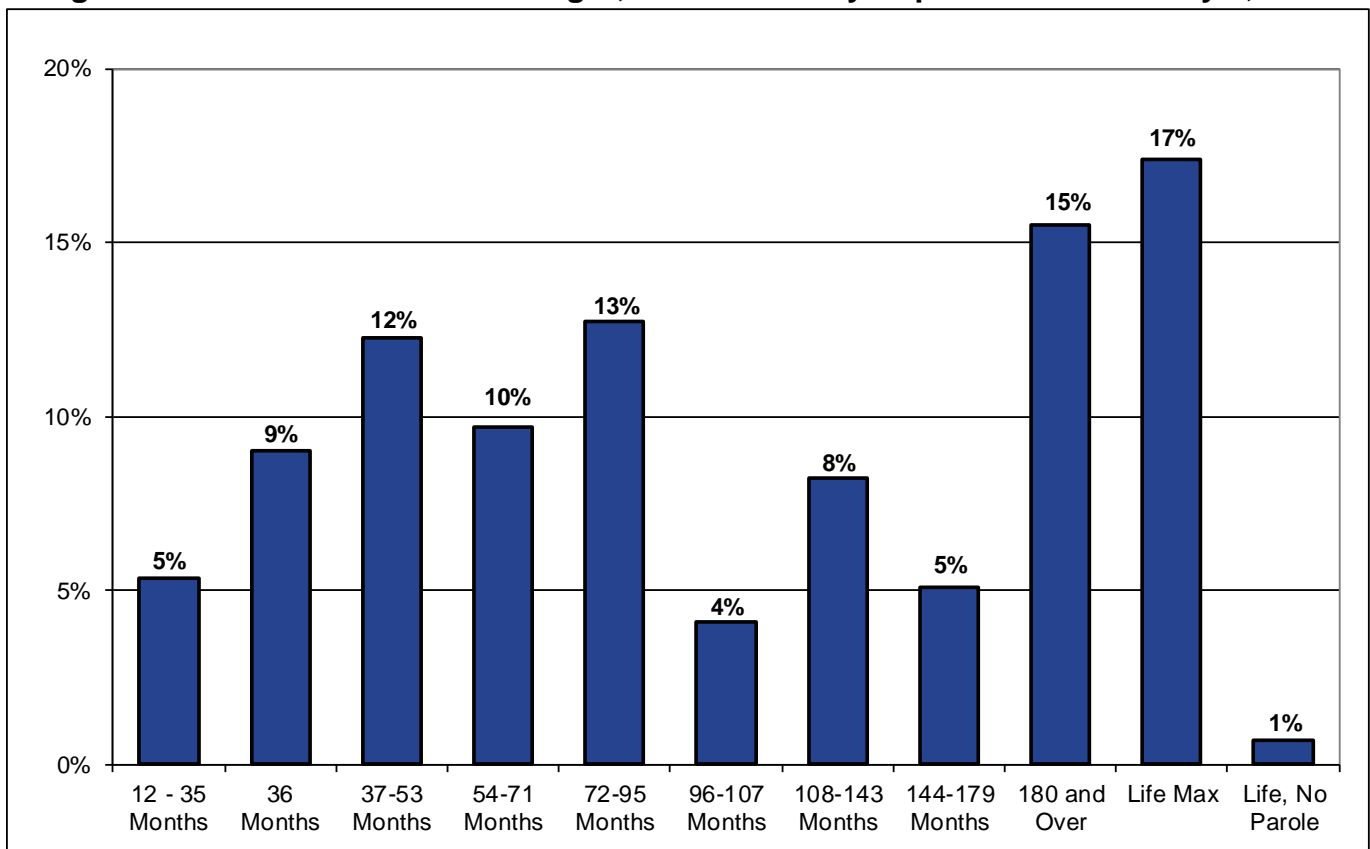
## Maximum Sentence

As of January 1, 2020, the median maximum sentence of incarcerated individuals was eight years (96 months). However, the average maximum sentence length was over 12 years, reflecting the influence of lengthy maximum terms of many offenders. About one-third had maximum sentences of 15 years or more with 18% of the population having a maximum sentence of life.

The average maximum sentence for females (104 months) was 44 months shorter than for males (148 months). The median maximum sentence for females (60 months) was 36 months shorter than for males (96 months). The average maximum sentence for incarcerated individuals (146 months) was 90 months longer than for incarcerated releasees (56 months).

In calculating the average maximum sentence length, “Life Without Parole” cases were given a value of 45 years or 540 months, and Life maximum cases were given a value of 25 years or 300 months.

**Figure 13. Maximum Sentence Length; Under Custody Population on January 1, 2020**



**Table 13A. Maximum Sentence; Under Custody Population on January 1, 2020**

Maximum Sentence	12 - 35 Months	36 Months	37-53 Months	54-71 Months	72-95 Months	96-107 Months	108-143 Months	144-179 Months	180 and Over	Life Max	Life, No Parole	Total Inmates
Total	2,369	3,982	5,421	4,299	5,636	1,808	3,635	2,259	6,857	7,707	303	44,276
Under Custody	5.4%	9.0%	12.2%	9.7%	12.7%	4.1%	8.2%	5.1%	15.5%	17.4%	0.7%	100.0%

**Table 13B. Maximum Sentence; Under Custody Population on January 1, 2020**

Maximum Sentence by Sex - Incarcerated Individuals	Male	Female	Total	Male	Female	Total
12 to 35 Months	2,036	192	2,228	4.9%	10.0%	5.1%
36 Months	3,478	324	3,802	8.4%	16.8%	8.7%
37-53 Months	4,952	290	5,242	11.9%	15.0%	12.0%
54-71 Months	4,007	210	4,217	9.6%	10.9%	9.7%
72-95 Months	5,296	240	5,536	12.7%	12.4%	12.7%
96-107 Months	1,721	71	1,792	4.1%	3.7%	4.1%
108-143 Months	3,478	126	3,604	8.4%	6.5%	8.3%
144-179 Months	2,161	85	2,246	5.2%	4.4%	5.2%
180 and Over	6,646	196	6,842	16.0%	10.2%	15.7%
Life Max	7,519	184	7,703	18.1%	9.5%	17.7%
Life, No Parole	292	11	303	0.7%	0.6%	0.7%
Total Incarcerated Individuals	41,586	1,929	43,515	100.0%	100.0%	100.0%
Maximum Sentence by Sex - Incarcerated Releasees	Male	Female	Total	Male	Female	Total
12 to 35 Months	127	14	141	18.1%	23.3%	18.5%
36 Months	159	21	180	22.7%	35.0%	23.7%
37-53 Months	164	15	179	23.4%	25.0%	23.5%
54-71 Months	80	2	82	11.4%	3.3%	10.8%
72-95 Months	94	6	100	13.4%	10.0%	13.1%
96-107 Months	16	0	16	2.3%	0.0%	2.1%
108-143 Months	29	2	31	4.1%	3.3%	4.1%
144-179 Months	13	0	13	1.9%	0.0%	1.7%
180 and Over	15	0	15	2.1%	0.0%	2.0%
Life Max	4	0	4	0.6%	0.0%	0.5%
Life, No Parole	0	0	0	0.0%	0.0%	0.0%
Total Incarcerated Releasees	701	60	761	100.0%	100.0%	100.0%
Total Under Custody	42,287	1,989	44,276	95.5%	4.5%	100.0%
Average and Median Maximum Sentence	Male Average	Female Average	Total Average	Male Median	Female Median	Total Median
Total Incarcerated Individuals	148.4	104.4	146.5	96.0	60.0	96.0
Total Incarcerated Releasees	57.4	43.3	56.3	48.0	36.0	48.0
Total Under Custody	146.9	102.6	144.9	96.0	60.0	96.0

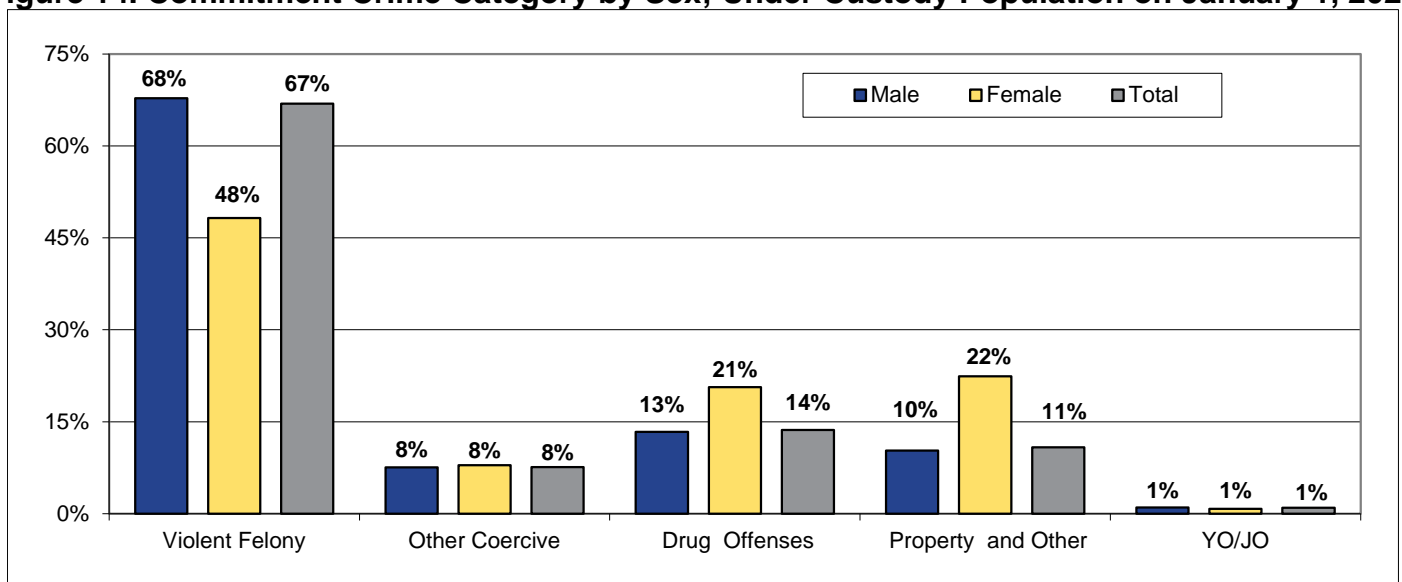
For incarcerated releasees, the median maximum sentence was 48 months. The difference between males and females was much smaller than the average, with a median maximum sentence of 48 months for males compared with 36 months for females.

## Commitment Crime

Sixty-seven percent (67%) of the individuals under custody on January 1, 2020 were convicted of a Violent Felony Offense (VFO). Additionally, 14% were convicted of drug crimes and another 11% were convicted of a Property or Other crime. Forty-eight percent (48%) of females were serving a sentence for a VFO compared to 68% of males. In contrast, 22% of females were sentenced for a Property and Other crime compared to 10% of males.

On January 1, 2020, there were 6,057 individuals serving drug crimes (14%) compared with 24,085 (34%) on January 1, 1997. This is a reduction of 18,028 (-75%) and compares with a reduction of 25,933 (-36%) in the total population. This disproportionately large change in the individuals with drug crimes is due to the drug law reforms enacted in 2009.

**Figure 14. Commitment Crime Category by Sex; Under Custody Population on January 1, 2020**



**Table 14A. Crime Category; Under Custody Population on January 1, 2020**

Commitment Crime Type by Sex	Violent Felony	Other Coercive	Drug Offenses	Property and Other	YO/JO	Total
Male	28,669	3,201	5,646	4,347	424	42,287
Female	959	157	411	446	16	1,989
Total	29,628	3,358	6,057	4,793	440	44,276
Male	67.8%	7.6%	13.4%	10.3%	1.0%	100.0%
Female	48.2%	7.9%	20.7%	22.4%	0.8%	100.0%
Total	66.9%	7.6%	13.7%	10.8%	1.0%	100.0%
<b>Crime Category by Incarceration Status</b>						
Incarcerated Individuals	29,427	3,280	5,836	4,555	417	43,515
Incarcerated Releasees	201	78	221	238	23	761
Total Under Custody	29,628	3,358	6,057	4,793	440	44,276
Incarcerated Individuals	67.6%	7.5%	13.4%	10.5%	1.0%	100.0%
Incarcerated Releasees	26.4%	10.2%	29.0%	31.3%	3.0%	100.0%
Total Under Custody	66.9%	7.6%	13.7%	10.8%	1.0%	100.0%

**Table 14B. Crime Category by Incarceration Status by Sex;  
Under Custody Population on January 1, 2020**

Commitment Crime Type	Incarcerated Individuals			Incarcerated Releasees			Grand Total
	Male	Female	Total	Male	Female	Total	
<b>Violent Felony</b>							
Arson 1st,2nd	161	30	191	0	0	0	191
Assault 1st	1,856	95	1,951	3	0	3	1,954
Assault 2nd	1,136	79	1,215	9	0	9	1,224
Burglary 1st	932	19	951	4	0	4	955
Burglary 2nd	2,669	93	2,762	19	0	19	2,781
Kidnapping 1st,2nd	286	17	303	1	0	1	304
Manslt 1st,Aggrav.2nd	1,955	145	2,100	2	0	2	2,102
Murder / Att. Murder	6,775	213	6,988	3	0	3	6,991
Rape 1st	1,405	8	1,413	20	1	21	1,434
Robbery 1st	2,879	86	2,965	11	0	11	2,976
Robbery 2nd	1,788	79	1,867	23	0	23	1,890
Sexual Abuse 1st,Aggrav.2nd	1,138	11	1,149	44	0	44	1,193
Sodomy 1st	848	10	858	20	0	20	878
Weapons Offenses	3,776	55	3,831	22	0	22	3,853
Other VFO Sex Offenses	694	15	709	17	0	17	726
Other Violent	171	3	174	2	0	2	176
Subtotal	28,469	958	29,427	200	1	201	29,628
	96.7%	3.3%	100.0%	99.5%	0.5%	100.0%	
<b>Other Coercive</b>							
Att Assault 2nd	300	23	323	11	0	11	334
Conspiracy 2,3,4	267	14	281	2	1	3	284
Manlaughter 2nd	182	26	208	0	0	0	208
Robbery 3rd	675	25	700	15	0	15	715
Other Homicide	148	26	174	1	0	1	175
Other Sex Offenses	761	19	780	39	0	39	819
Other Weapons	520	7	527	8	0	8	535
Other Coercive	271	16	287	1	0	1	288
Subtotal	3,124	156	3,280	77	1	78	3,358
	95.2%	4.8%	100.0%	98.7%	1.3%	100.0%	
<b>Drug Offenses</b>							
Drug Possession	3,035	206	3,241	127	10	137	3,378
Drug Sale	2,413	182	2,595	71	13	84	2,679
Subtotal	5,448	388	5,836	198	23	221	6,057
	93.4%	6.6%	100.0%	89.6%	10.4%	100.0%	
<b>Property and Other</b>							
Burglary 3rd	1,284	72	1,356	72	10	82	1,438
Contempt 1st	261	4	265	14	2	16	281
Drive Intoxicated	399	58	457	18	6	24	481
Forgery	258	43	301	19	3	22	323
Grand Larceny	748	120	868	31	6	37	905
Stolen Property	216	21	237	17	0	17	254
All Other felonies	978	93	1,071	32	8	40	1,269
Subtotal	4,144	411	4,555	203	35	238	4,793
	91.0%	9.0%	100.0%	85.3%	14.7%	100.0%	
<b>JO/YO</b>							
Juvenile Offenders	63	2	65	0	0	0	65
Youthful Offenders	338	14	352	23	0	23	375
Subtotal	401	16	417	23	0	23	440
	96.2%	3.8%	100.0%	100.0%	0.0%	100.0%	
<b>Grand Total</b>	<b>41,586</b>	<b>1,929</b>	<b>43,515</b>	<b>701</b>	<b>60</b>	<b>761</b>	<b>44,276</b>
	95.6%	4.4%	100.0%	92.1%	7.9%	100.0%	

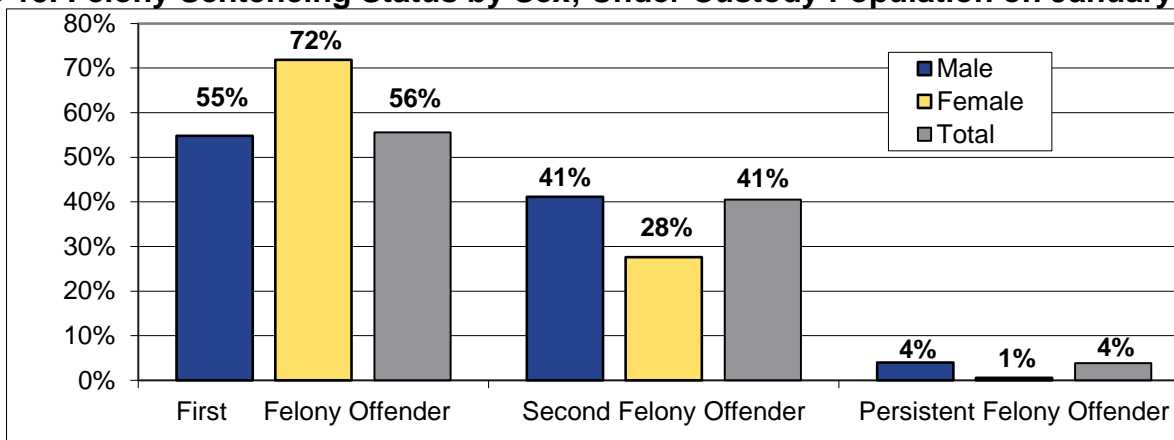


## Felony Sentencing Status

Fifty-six percent (56%) of individuals under custody on January 1, 2020 were sentenced as first felony offenders. Crimes are presented by felony sentencing status in Table 15B. In general, VFOs and YO/JOs were more likely to be first felony offenders while Drug, Property, and Other Coercive offenders were more likely to be second felony offenders. Men were more likely than women (41% vs. 28%) to be sentenced as second felony offenders.

New York State Penal Law establishes more severe sentences for second felony offenders and persistent felony offenders than for first felony offenders. In general, a persistent felony offender is a person convicted of at least two prior felony offenses on separate occasions. This status allows them to be sentenced to a life maximum. It should be noted that some offenders included among the individuals sentenced as first felony offenders were also convicted of prior felony crimes and some even had previous sentences to state prison. The majority of such offenders were convicted of class A-1 violent felony crimes, which do not permit sentencing as a second felony offender since the penalties for A-1 violent felony crimes are already the most severe.

**Figure 15. Felony Sentencing Status by Sex; Under Custody Population on January 1, 2020**



**Table 15A. Felony Sentencing Status; Under Custody Population on January 1, 2020**

Felony Sentencing Status by Sex	First Felony Offender	Second Felony Offender	Persistent Felony Offender	Total
Male	23,174	17,406	1,707	42,287
Female	1,429	549	11	1,989
Total	24,603	17,955	1,718	44,276
Male	54.8%	41.2%	4.0%	100.0%
Female	71.8%	27.6%	0.6%	100.0%
Total	55.6%	40.6%	3.9%	100.0%
Felony Sentencing Status by Incarceration Status				
Incarcerated Individuals	24,194	17,604	1,717	43,515
Incarcerated Releasees	409	351	1	761
Total Under Custody	24,603	17,955	1,718	44,276
Incarcerated Individuals	55.6%	40.5%	3.9%	100.0%
Incarcerated Releasees	53.7%	46.1%	0.1%	100.0%
Total Under Custody	55.6%	40.6%	3.9%	100.0%

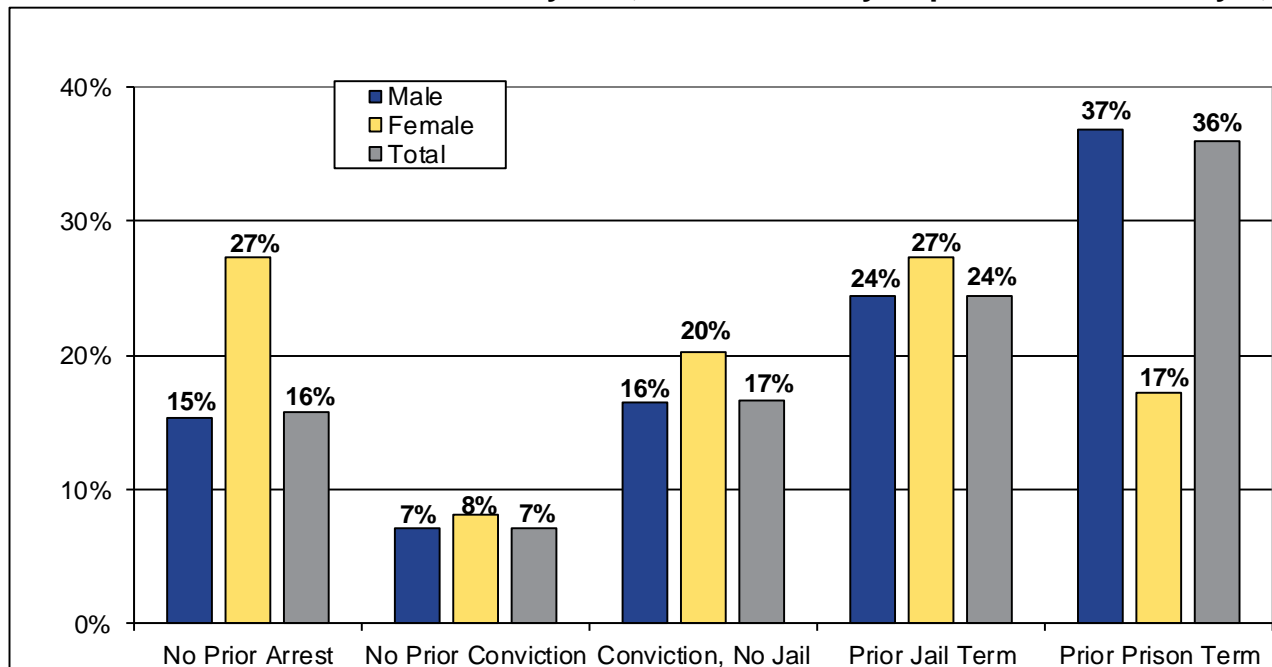
**Table 15B. Felony Sentencing Status; Under Custody Population on January 1, 2020**

Commitment Crime Type	Incarcerated Individuals				Incarcerated Releasees				Grand Total
	First Felony Offender	Second Felony Offender	Persistent Felony Offender	Total	First Felony Offender	Second Felony Offender	Persistent Felony Offender	Total	
Violent Felony									
Arson 1st,2nd	132	58	1	191	0	0	0	0	191
Assault 1st	1204	672	75	1,951	1	2	0	3	1,954
Assault 2nd	571	572	72	1,215	5	4	0	9	1,224
Burglary 1st	431	439	81	951	2	2	0	4	955
Burglary 2nd	920	1,444	398	2,762	7	12	0	19	2,781
Kidnapping 1st,2nd	218	71	14	303	1	0	0	1	304
Manslt 1st,Aggrav.2nd	1,564	512	24	2,100	2	0	0	2	2,102
Murder / Attempted Murder	6,536	403	49	6,988	3	0	0	3	6,991
Rape 1st	869	444	100	1,413	17	4	0	21	1,434
Robbery 1st	1,277	1,318	370	2,965	7	4	0	11	2,976
Robbery 2nd	783	870	214	1,867	12	10	1	23	1,890
Sexual Abuse 1st,Aggrav.2nd	911	195	43	1,149	36	8	0	44	1,193
Sodomy 1st	606	207	45	858	18	2	0	20	878
Weapons Offenses	1,951	1,772	108	3,831	16	6	0	22	3,853
Other VFO Sex Offenses	534	159	16	709	9	8	0	17	726
Other Violent	104	65	5	174	2	0	0	2	176
Subtotal	18,611	9,201	1,615	29,427	138	62	1	201	29,628
	63.2%	31.3%	5.5%	100.0%	68.7%	30.8%	0.5%	100.0%	
Other Coercive									
Att Assault 2nd	79	244	0	323	1	10	0	11	334
Conspiracy 2,3,4	139	137	5	281	1	2	0	3	284
Manslaughter 2nd	160	42	6	208	0	0	0	0	208
Robbery 3rd	163	522	15	700	5	10	0	15	715
Other Homicide	155	17	2	174	1	0	0	1	175
Other Sex Offenses	545	230	5	780	20	19	0	39	819
Other Weapons	121	400	6	527	5	3	0	8	535
Other Coercive	136	143	8	287	0	1	0	1	288
Subtotal	1,498	1,735	47	3,280	33	45	0	78	3,358
	45.7%	52.9%	1.4%	100.0%	42.3%	57.7%	0.0%	100.0%	
Drug Offenses									
Drug Possession	1,071	2,169	1	3,241	57	80	0	137	3,378
Drug Sale	803	1,791	1	2,595	39	45	0	84	2,679
Subtotal	1,874	3,960	2	5,836	96	125	0	221	6,057
	32.1%	67.9%	0.0%	100.0%	43.4%	56.6%	0.0%	100.0%	
Property and Other									
Burglary 3rd	343	1,000	13	1,356	38	44	0	82	1,438
Contempt 1st	94	167	4	265	9	7	0	16	281
Forgery	78	219	4	301	7	15	0	22	323
Drive Intoxicated	445	5	7	457	24	0	0	24	481
Grand Larceny	284	575	9	868	14	23	0	37	905
Stolen Property	58	176	3	237	5	12	0	17	254
All Other Felonies	492	566	13	1,071	22	18	0	40	1,111
Subtotal	1,794	2,708	53	4,555	119	119	0	238	4,793
	39.4%	59.5%	1.2%	100.0%	50.0%	50.0%	0.0%	100.0%	
JO/YO									
Juvenile Offender	65	0	0	65	0	0	0	0	65
Youthful Offender	352	0	0	352	23	0	0	23	375
Subtotal	417	0	0	417	23	0	0	23	440
	100.0%	0.0%	0.0%	100.0%	100.0%	0.0%	0.0%	100.0%	
Grand Total	24,194	17,604	1,717	43,515	409	351	1	761	44,276
	55.6%	40.5%	3.9%	100.0%	53.7%	46.1%	0.1%	100.0%	

## Prior Adult Criminal Record

For this report, individuals under custody are placed in a prior adult criminal record category based on their most extensive contact with the criminal justice system prior to their current incarceration. Thirty-six percent (36%) of individuals under custody had served a prior prison term. For 25% of the custody population, prior jail was the most serious contact with the criminal justice system, while 16% had no prior arrest. Women had less extensive prior adult records than men.

**Figure 16. Prior Adult Criminal Record by Sex; Under Custody Population on January 1, 2020**



**Table 16. Prior Adult Criminal Record; Under Custody Population on January 1, 2020\***

Prior Adult Criminal Record by Sex	No Prior Arrest	No Prior Conviction	Conviction, No Jail	Prior Jail Term	Prior Prison Term	Total
Male	6,461	2,980	6,956	10,299	15,588	42,284
Female	543	160	402	542	342	1,989
Total	7,004	3,140	7,358	10,841	15,930	44,273
Male	15.3%	7.0%	16.5%	24.4%	36.9%	100.0%
Female	27.3%	8.0%	20.2%	27.2%	17.2%	100.0%
Total	15.8%	7.1%	16.6%	24.5%	36.0%	100.0%
Prior Adult Criminal Record by Incarceration Status						
Incarcerated Individuals	6,924	3,094	7,208	10,591	15,696	43,513
Incarcerated Releasees	80	46	150	250	234	760
Total Under Custody	7,004	3,140	7,358	10,841	15,930	44,273
Incarcerated Individuals	15.9%	7.1%	16.6%	24.3%	36.1%	100.0%
Incarcerated Releasees	10.5%	6.1%	19.7%	32.9%	30.8%	100.0%
Total Under Custody	15.8%	7.1%	16.6%	24.5%	36.0%	100.0%

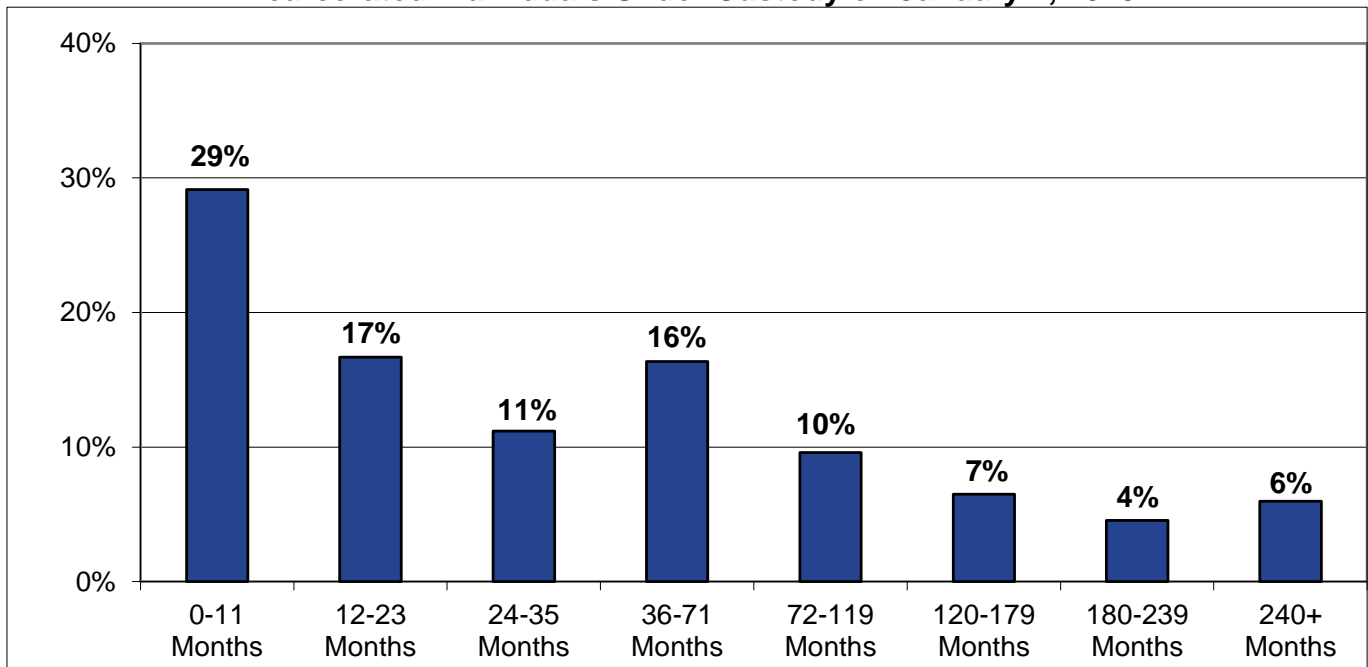
\* 3 missing cases

## Length of Time Served in Department Custody (Incarcerated Individuals Only)

This section is limited to incarcerated individuals only so it presents data regarding time spent under custody prior to release from prison to the community.

Incarcerated individuals under custody on January 1, 2020 had spent an average of 63 months at DOCCS since their latest admission date. The median length of time served was 28 months. Women served less time in custody than men, with an average of 34 months and a median of 15 months.

**Figure 17. Length of Time Served in DOCCS Custody Since Last Admission Date  
Incarcerated Individuals Under Custody on January 1, 2020**



**Table 17. DOCCS Time Served in Months Since Last Admission Date;  
Incarcerated Individuals Under Custody on January 1, 2020**

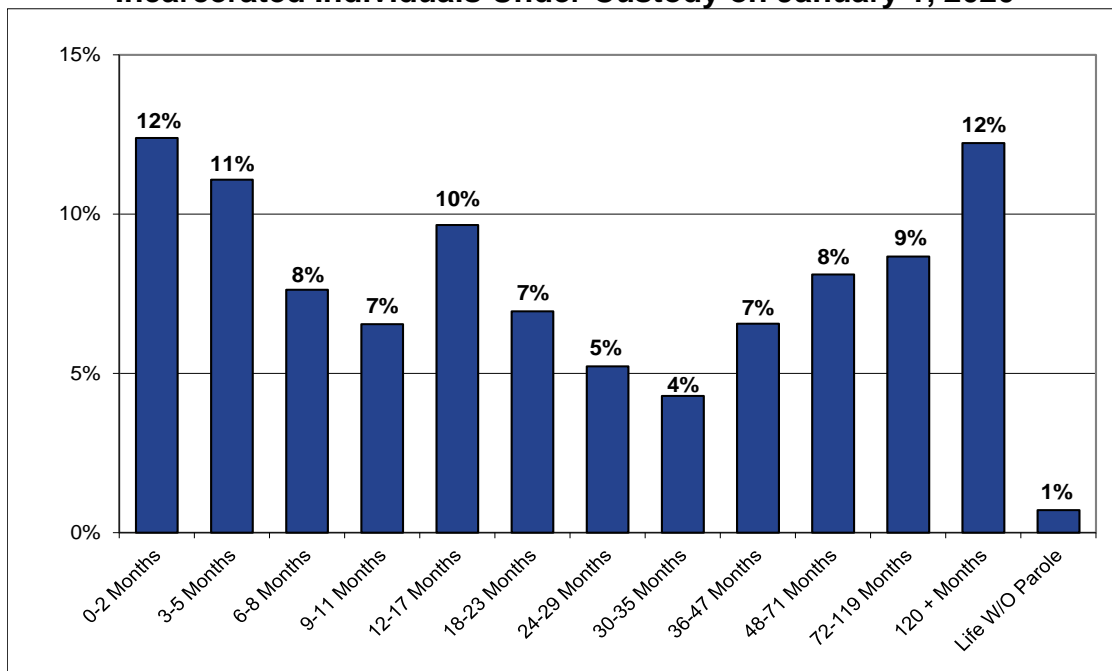
Time in DOCCS	0-11 Months	12-23 Months	24-35 Months	36-71 Months	72-119 Months	120-179 Months	180-239 Months	240+ Months	Total
Male	11,820	6,880	4,663	6,890	4,055	2,778	1,934	2,566	41,586
Female	863	380	209	225	122	55	45	30	1,929
Total	12,683	7,260	4,872	7,115	4,177	2,833	1,979	2,596	43,515
Male	28.4%	16.5%	11.2%	16.6%	9.8%	6.7%	4.7%	6.2%	100.0%
Female	44.7%	19.7%	10.8%	11.7%	6.3%	2.9%	2.3%	1.6%	100.0%
Total	29.1%	16.7%	11.2%	16.4%	9.6%	6.5%	4.5%	6.0%	100.0%
Average Served Since Latest Admission Date in Months				Male	64.6	Female	34.1	Total	63.2
Median Served Since Latest Admission Date in Months				Male	29.0	Female	14.6	Total	28.1

## Time to Earliest Release (Incarcerated Individuals Only)

Time to earliest release date is a measure of the length of time until the earliest possible date at which the incarcerated individual can legally be released. Incarcerated releasees are not included in this section.

Fifty-four percent (54%) of the incarcerated individual population had less than two years to their earliest release dates. The average time to earliest release for the incarcerated individual population on January 1, 2020 was 56 months. The median time to earliest release was 20 months. Median and average time to earliest release were much lower for female than for male incarcerated individuals.

**Figure 18. Length of Time to Earliest Release Date (Incarcerated Individuals Only); Incarcerated Individuals Under Custody on January 1, 2020**



**Table 18. Time to Earliest Release Date in Months; Incarcerated Individuals Under Custody on January 1, 2020**

Time to Earliest Release Date	0-2 Months	3-5 Months	6-8 Months	9-11 Months	12-17 Months	18-23 Months	24-29 Months	30-35 Months	36-47 Months	48-71 Months	72-119 Months	120 + Months	Life W/O Parole	Total*
Male	4,974	4,494	3,082	2,651	3,965	2,848	2,138	1,781	2,713	3,363	3,620	5,106	292	41,027
Female	344	262	192	156	181	135	103	61	103	115	99	142	11	1,904
Total	5,318	4,756	3,274	2,807	4,146	2,983	2,241	1,842	2,816	3,478	3,719	5,248	303	42,931
Male	12.1%	11.0%	7.5%	6.5%	9.7%	6.9%	5.2%	4.3%	6.6%	8.2%	8.8%	12.4%	0.7%	100.0%
Female	18.1%	13.8%	10.1%	8.2%	9.5%	7.1%	5.4%	3.2%	5.4%	6.0%	5.2%	7.5%	0.6%	100.0%
Total	12.4%	11.1%	7.6%	6.5%	9.7%	6.9%	5.2%	4.3%	6.6%	8.1%	8.7%	12.2%	0.7%	100.0%
Incarcerated Individuals	Average Time to Earliest Release Date in Months						Male	57.4	Female		32.9	Total		56.3
	Median Time to Earliest Release Date in Months						Male	20.2	Female		11.9	Total		19.8

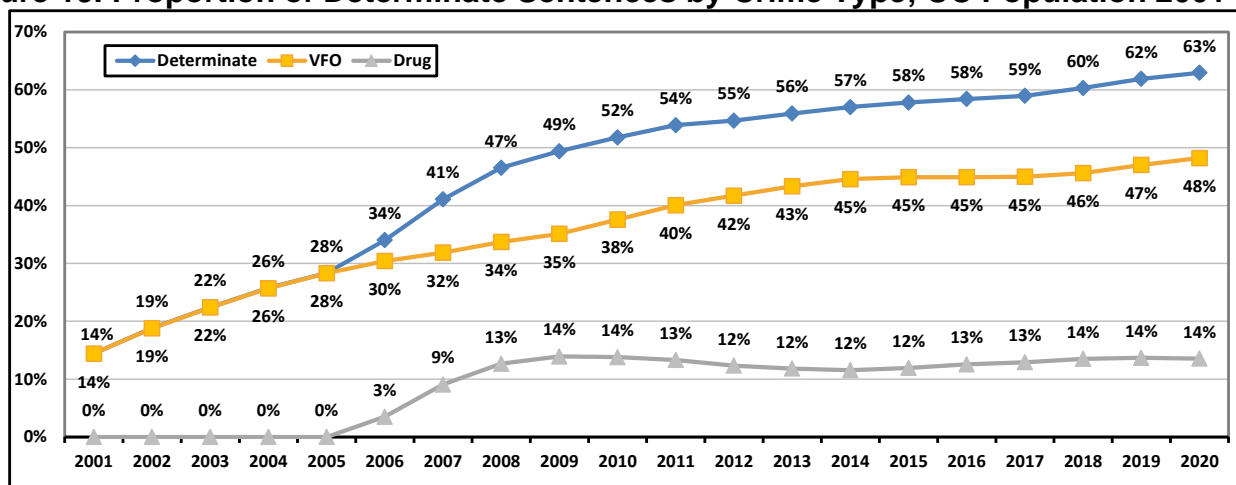
\* 584 missing cases

## Determinate Sentencing

The proportion of individuals under custody in DOCCS serving determinate sentences has grown dramatically. Sixty-three percent of the 44,276 individuals under custody on January 1, 2020 were serving determinate sentences, more than four times the 14% reported in 2001. Table 19B below starts with 2001 as the baseline data prior to the start of drug determinate sentencing. Selected years are included in the table due to space limitations.

As of January 1, 2020, 99% of drug offenders were serving determinate sentences, while 72% of the violent felony offenders were serving determinate sentences.

**Figure 19. Proportion of Determinate Sentences by Crime Type; UC Population 2001-2020**



**Table 19A. Number of Determinate Sentences; Under Custody Population on January 1, 2020**

Offender Status	Violent Felony	Other Coercive	Drug Offenses	Property and Other Offenses	Youthful Offender	Juvenile Offender	Total
Incarcerated Individuals & Incarcerated Releasees							
Indeterminate	8,280	2,837	61	4,786	370	65	16,399
Determinate	21,348	521	5,996	7	5	0	27,877
<b>Total</b>	<b>29,628</b>	<b>3,358</b>	<b>6,057</b>	<b>4,793</b>	<b>375</b>	<b>65</b>	<b>44,276</b>
Indeterminate	27.9%	84.5%	1.0%	99.9%	98.7%	100.0%	37.0%
Determinate	72.1%	15.5%	99.0%	0.1%	1.3%	0.0%	63.0%
<b>Total</b>	<b>100.0%</b>	<b>100.0%</b>	<b>100.0%</b>	<b>100.0%</b>	<b>100.0%</b>	<b>100.0%</b>	<b>100.0%</b>

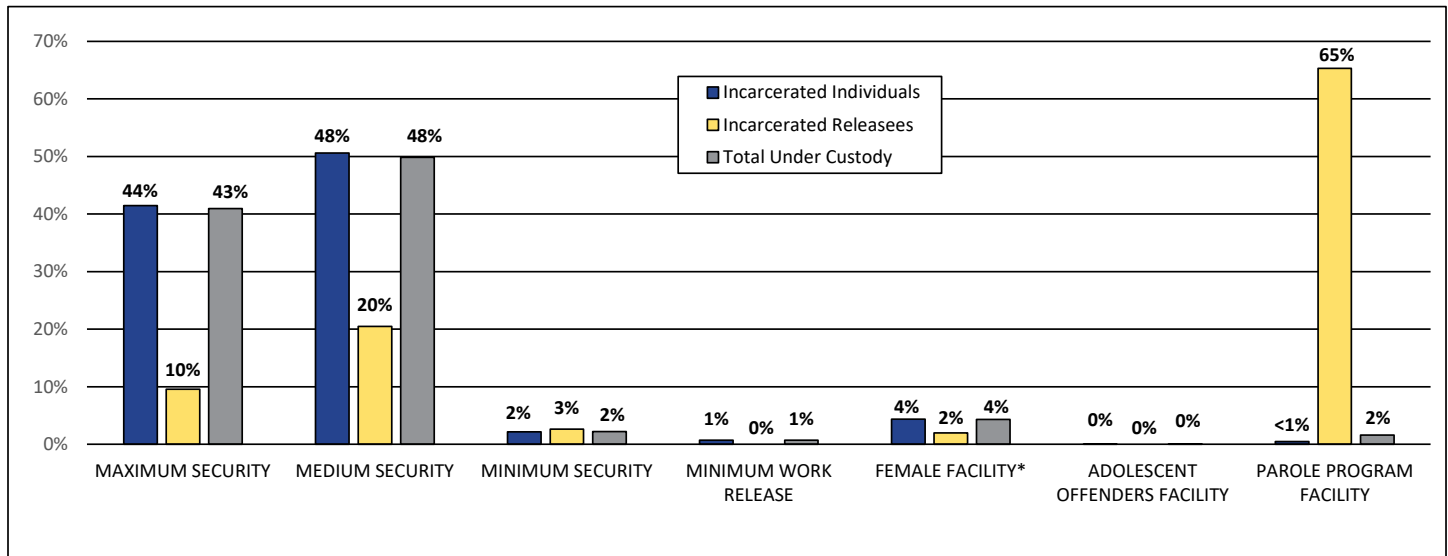
**Table 19B. Number and Proportion of Determinate Sentences; Under Custody Populations on January 1, 2001, 2005, 2010–2020**

January 1,	2001	2005	2010	2011	2012	2013	2014	2015	2016	2017	2018	2019	2020
Total Determinate	10,297	18,406	30,689	30,845	30,609	30,681	30,879	30,704	30,584	30,352	30,322	29,377	27,877
Percent of UC	14%	28%	52%	54%	55%	56%	57%	58%	58%	59%	60%	62%	63%
Violent Determinate	10,291	18,380	22,277	22,936	23,355	23,785	24,140	23,846	23,511	23,154	22,937	22,321	21,348
Percent of UC	14%	28%	38%	40%	42%	43%	45%	45%	45%	45%	46%	47%	48%
Drug Determinate	1	0	8,182	7,614	6,902	6,484	6,257	6,343	6,566	6,653	6,787	6,491	5,996
Percent of UC	0%	0%	14%	13%	12%	12%	12%	12%	13%	13%	14%	14%	14%
Total UC Population	71,354	64,905	59,279	57,229	55,979	54,865	54,142	53,103	52,344	51,466	50,271	47,459	44,276

## Facility Security Level

Of the 44,276 individuals under custody on January 1, 2020, close to half (48%) were in a Medium Security level facility, followed by 43% in a Maximum Security level facility. About 1% of individuals under custody were in a Work Release facility and another 2% were in parole program facilities.

**Figure 20. Facility Security Level by Incarceration Status;  
Under Custody Population on January 1, 2020**



**Table 20A. Facility Security Level by Incarceration Status; UC Population on January 1, 2020**

Security Level	Incarcerated Individuals		Incarcerated Releasees		Total Under Custody	
	Count	Percentage	Count	Percentage	Count	Percentage
MAXIMUM SECURITY	18,052	41.5%	73	9.6%	18,125	40.9%
MEDIUM SECURITY	22,026	50.6%	156	20.5%	22,182	50.1%
MINIMUM SECURITY	954	2.2%	20	2.6%	974	2.2%
MINIMUM WORK RELEASE	320	0.7%	0	0.0%	320	0.7%
FEMALE FACILITY*	1,910	4.4%	15	2.0%	1,925	4.3%
ADOLESCENT OFFENDERS FACILITY	38	0.1%	0	0.0%	38	0.1%
PAROLE PROGRAM FACILITY	215	0.5%	497	65.3%	712	1.6%
GRAND TOTAL	43,515	100.0%	761	100.0%	44,276	100.0%

\* Some females were housed in adolescent or parole program facilities.

**Table 20B. Security Level and Facility by Incarceration Status;  
Under Custody Population on January 1, 2020 (Page 1 of 2)**

Security Level	Housing Facility	Incarcerated Individuals	Incarcerated Releasees	Total	
MAXIMUM SECURITY	ATTICA	1,832	0	1,832	
	AUBURN	1,235	3	1,238	
	CLINTON	2,241	2	2,243	
	COXSACKIE	788	2	790	
	DOWNSTATE	1,041	15	1,056	
	EASTERN	938	0	938	
	ELMIRA	1,524	15	1,539	
	FIVE POINTS	1,117	19	1,136	
	GREAT MEADOW	1,403	0	1,403	
	GREEN HAVEN	1,797	12	1,809	
	SHAWANGUNK	461	1	462	
	SING SING	1,425	0	1,425	
	SOUTHPORT	366	0	366	
	SULLIVAN	456	2	458	
	UPSTATE	683	0	683	
	WENDE	745	2	747	
	SUBTOTAL	18,052	73	18,125	
	MEDIUM SECURITY	ALTONA	383	0	383
		BARE HILL	1,113	0	1,113
CAPE VINCENT		757	0	757	
CAYUGA		818	1	819	
COLLINS		972	0	972	
FISHKILL		1,459	115	1,574	
FRANKLIN		1,263	1	1,264	
GOUVERNEUR		885	0	885	
GOWANDA		1,307	2	1,309	
GREENE		1,426	0	1,426	
GROVELAND		897	0	897	
HALE CREEK		398	0	398	
MARCY		1,053	2	1,055	
MIDSTATE		1,371	19	1,390	
MOHAWK		1,286	1	1,287	
OGDENSBURG		354	0	354	
ORLEANS		739	2	741	
OTISVILLE		584	0	584	
RIVERVIEW		693	1	694	
ULSTER		480	7	487	
WALLKILL		581	0	581	
WASHINGTON		749	0	749	
WATERTOWN		426	0	426	
WOODBOURNE	766	5	771		
WYOMING	1,266	0	1,266		
SUBTOTAL	22,026	156	22,182		



**Table 20B. Security Level and Facility by Incarceration Status;  
Under Custody Population on January 1, 2020 (Page 2 of 2)**

Security Level	Housing Facility	Incarcerated Individuals	Incarcerated Releasees	Total
MINIMUM SECURITY	EDGECOMBE	15	0	15
	HUDSON	32	0	32
	LAKEVIEW	566	0	566
	MORIAH	169	0	169
	QUEENSBORO	172	20	192
	SUBTOTAL	954	20	974
MINIMUM WORK RELEASE	COLLINS	32	0	32
	FISHKILL	39	0	39
	HALE CREEK	2	0	2
	HUDSON	49	0	49
	QUEENSBORO	156	0	156
	ROCHESTER	42	0	42
	SUBTOTAL	320	0	320
FEMALE FACILITY	ALBION (MEDIUM)	858	10	868
	BEDFORD HILLS (MAXIMUM)	661	5	666
	EDGECOMBE (MINIMUM)	28	0	28
	LAKEVIEW (MINIMUM)	84	0	84
	TACONIC (MEDIUM)	279	0	279
	SUBTOTAL	1,910	15	1,925
ADOLESCENT OFFENDERS FACILITY	ADIRONDACK	15	0	15
	HUDSON	23	0	23
	SUBTOTAL	38	0	38
CORRECTIONAL FACILITIES TOTAL		43,300	264	43,564
PAROLE PROGRAM FACILITY	EDGECOMBE	3	47	50
	HALE CREEK	0	38	38
	ORLEANS	0	79	79
	TACONIC	0	1	1
	WILLARD	212	332	544
PAROLE PROGRAM FACILITIES TOTAL		215	497	712
GRAND TOTAL		43,515	761	44,276

## Section Three

### CHANGES OVER TEN YEARS

**Table 21. Historic Change in Age by Sex; Under Custody on January 1, 2010 and 2020**

January 1	Age by Sex	16-17	18-20	21-29	30-39	40-49	50-59	60+	Total	Average
2020	Male	34	848	9,972	13,330	8,927	6,489	2,687	42,287	39.5
	Female	2	32	511	731	373	258	82	1,989	38.0
	Total	36	880	10,483	14,061	9,300	6,747	2,769	44,276	39.4
	Male	0.1%	2.0%	23.6%	31.5%	21.1%	15.3%	6.4%	100.0%	
	Female	0.1%	1.6%	25.7%	36.8%	18.8%	13.0%	4.1%	100.0%	
	Total	0.1%	2.0%	23.7%	31.8%	21.0%	15.2%	6.3%	100.0%	
2010	Male	199	2,625	15,554	16,112	14,453	6,042	1,771	56,756	37.0
	Female	4	87	697	682	744	240	69	2,523	37.4
	Total	203	2,712	16,251	16,794	15,197	6,282	1,840	59,279	37.0
	Male	0.4%	4.6%	27.4%	28.4%	25.5%	10.6%	3.1%	100.0%	
	Female	0.2%	3.4%	27.6%	27.0%	29.5%	9.5%	2.7%	100.0%	
	Total	0.3%	4.6%	27.4%	28.3%	25.6%	10.6%	3.1%	100.0%	
Change	Change (Male)	-165	-1,777	-5,582	-2,782	-5,526	447	916	-14,469	2.5
	Percent Change	-83%	-68%	-36%	-17%	-38%	7%	52%	-25%	7%
	Change (Female)	-2	-55	-186	49	-371	18	13	-534	0.6
	Percent Change	-50%	-63%	-27%	7%	-50%	8%	19%	-21%	2%
	Change (Total)	-167	-1,832	-5,768	-2,733	-5,897	465	929	-15,003	2.4
	Percent Change	-82%	-68%	-35%	-16%	-39%	7%	50%	-25%	7%

The total under custody population dropped by 25% between 2010 and 2020. During this period, all age groups under 50 have decreased while older age groups have increased. The average age of individuals under custody has increased by 2 years over this time. Overall, there was a larger percentage decrease in males than females over this time period (-25% vs. -21%).

**Table 22. Historic Change in Race and Ethnicity by Sex; Under Custody on January 1, 2010 and 2020**

January 1	Race/Ethnic Status by Sex	White	African American	Hispanic	Native American	Asian	Other	Unknown	Total
2020	Male	9785	20,754	10,413	384	247	528	176	42,287
	Female	962	654	282	21	14	26	30	1,989
	Total	10747	21,408	10,695	405	261	554	206	44,276
	Male	23.1%	49.1%	24.6%	0.9%	0.6%	1.2%	0.4%	100.0%
	Female	48.4%	32.9%	14.2%	1.1%	0.7%	1.3%	1.5%	100.0%
	Total	24.3%	48.4%	24.2%	0.9%	0.6%	1.3%	0.5%	100.0%
2010	Male	12160	29,108	14,297	322	287	302	280	56,756
	Female	893	1,098	473	7	20	15	17	2,523
	Total	13053	30,206	14,770	329	307	317	297	59,279
	Male	0.4%	4.6%	27.4%	28.4%	25.5%	10.6%	3.1%	100.0%
	Female	0.2%	3.4%	27.6%	27.0%	29.5%	9.5%	2.7%	100.0%
	Total	0.3%	4.6%	27.4%	28.3%	25.6%	10.6%	3.1%	100.0%
Change	Change (Male)	-2,375	-8,354	-3,884	62	-40	226	-104	-14,469
	Percent Change	-20%	-29%	-27%	19%	-14%	75%	-37%	-25%
	Change (Female)	69	-444	-191	14	-6	11	13	-534
	Percent Change	8%	-40%	-40%	200%	-30%	73%	76%	-21%
	Change (Total)	-2,306	-8,798	-4,075	76	-46	237	-91	-15,003
	Percent Change	-18%	-29%	-28%	23%	-15%	75%	-31%	-25%

Between 2010 and 2020, there were sizeable decreases among African-Americans and Hispanics in the under custody population.

**Table 23. Historic Change in VFO; Under Custody on January 1, 2010 and 2020**

January 1	Commitment Crime Type by Sex	Violent Felony	Other Coercive	Drug Offenses	Property and Other	YO/JO	Total
2020	Male	9785	20,754	10,413	384	247	528
	Female	962	654	282	21	14	26
	Total	10747	21,408	10,695	405	261	554
	Male	23.1%	49.1%	24.6%	0.9%	0.6%	1.2%
	Female	48.4%	32.9%	14.2%	1.1%	0.7%	1.3%
	Total	24.3%	48.4%	24.2%	0.9%	0.6%	1.3%
2010	Male	34526	4,478	10,075	6,577	1,100	56,756
	Female	1008	240	612	615	48	2,523
	Total	35534	4,718	10,687	7,192	1,148	59,279
	Male	0.4%	4.6%	27.4%	28.4%	25.5%	10.6%
	Female	0.2%	3.4%	27.6%	27.0%	29.5%	9.5%
	Total	0.3%	4.6%	27.4%	28.3%	25.6%	10.6%
Change	Change (Male)	-24,741	16,276	338	-6,193	-853	-56,228
	Percent Change	-72%	363%	3%	-94%	-78%	-99%
	Change (Female)	-46	414	-330	-594	-34	-2,497
	Percent Change	-5%	173%	-54%	-97%	-71%	-99%
	Change (Total)	-24,787	16,690	8	-6,787	-887	-58,725
	Percent Change	-70%	354%	0%	-94%	-77%	-99%

Due to changes in the crime rate and changes to drug law sentencing, there has been a large drop in the custody population. During this period, there was a 43% decline in the custody population with drug sentences and a 62% decline in YO/JOs compared with an overall population decline of 25%. Numerically, the largest decrease was among VFOs (-5,906; -17%). There have been smaller but sizable declines in Other Coercive and Property and Other crimes during this period. As a result, there has been a shift in the crime composition of the individuals under custody so that the population is now comprised of 67% violent felonies and 14% drug felonies.

**Table 24. Historic Change in Average and Median Sentence; Under Custody on January 1, 2010 and 2020**

Avg. Minimum Sentence by Sex, January 1, 2020	Average in Months					
	Male	135.8	Female	81.1	Total	133.3
Avg. Minimum Sentence by Sex, January 1, 2010	Average in Months					
	Male	114.3	Female	69.1	Total	112.4
Change in Avg.	19%	21.5	17%	12.0	19%	21.0
Median Minimum Sentence by Sex, January 1, 2020	Median in Months					
	Male	73.0	Female	41.0	Total	72.0
Median Minimum Sentence by Sex, January 1, 2010	Median in Months					
	Male	62.0	Female	36.0	Total	61.0
Change in Median	18%	11.0	14%	5.0	18%	11.0

Average and median sentences have increased over the time period, due to drug law reforms. This has reduced the number and proportion of individuals under custody with drug sentences. The effect is that a higher proportion of individuals under custody have violent felonies with longer sentences.

Prepared by:

Division of Program Planning,  
Research and Evaluation

April 2022