



Corrections and Community Supervision

Community Supervision

Legislative Report

2020

Community Supervision Legislative Report 2020

This annual report was produced in response to legislation enacted in 2011 that merged the former Department of Correctional Services and the former Division of Parole into the Department of Corrections and Community Supervision (see Correction Law Section 201 (15)).

That legislation required the Commissioner of the new agency to provide an annual report to the legislature regarding: parolees released from prison to community supervision, parolees supervised on community supervision, parolees whose community supervision was revoked for violating the conditions of release, parolees who were returned to prison for a new offense, and parolees under community supervision who were transferred out of state to be supervised. This report provides the legislature with the required information. The Department has issued eight previous reports and they can be found at <https://doccs.ny.gov/research-and-reports>. All references to community supervision refer to parole supervision; probationers are not included in the report.

TABLE OF CONTENTS

EXECUTIVE SUMMARY	i
SECTION 1 <i>Parolees Released to Community Supervision</i>	1
SECTION 2 <i>Parolees Under Community Supervision</i>	5
SECTION 3 <i>Violation Process</i>	19
SECTION 4 <i>Parolees Removed from Community Supervision</i>	22
SECTION 5 <i>Parolees Supervised Out-of-State</i>	29
SECTION 6 <i>Parolees Supervised from Other States</i>	30

EXECUTIVE SUMMARY

- There were 19,684 releases to supervision during 2019. This was a decrease of 18% from the 23,914 releases in 2010 (Table 1).
- Conditional releases made up 60% of the releases to community supervision in 2019. The 11,826 conditional releases in 2019 were 24% lower than then the 15,595 conditional releases in 2010 (Table 1).
- Between 2010 and 2019, the proportion of Violent Felony Offenders (VFO) and A-I Violent Offenders released to community supervision increased from 34% to 43%. During the same period of time, the proportion of Drug Offenders released to community supervision decreased from 34% to 23% (Table 2).
- Since 2015, the active parolee population under community supervision increased from 35,477 to 35,743, which represents an increase of 1%. During the same period of time, the incarcerated offender population decreased by 15%, from 52,344 to 44,276 (Figure 1).
- While the total number of parolees under community supervision decreased between 2010 and 2019, the number and proportion of parolees under community supervision for violent offenses increased from 16,857 (44%) at the end of 2010 to 19,433 (54%) at the end of 2019 (Table 7).
- On December 31, 2019, 31% of parolees on the street were supervised at COMPAS Supervision Level 1 (25:1), 13% at Level 2 (40:1), 25% at Level 3 (80:1), and 30% at Level 4 (160:1) (Table 12).
- The number of ultimate violation process outcomes for parole violators with sustained charges was mostly unchanged between 2015 and 2019. The number of cases ordered to prison, Willard or an Alternative 90 or 45 Day program decreased by 16% during this five-year period while the number of cases revoked and restored to the street or program more than doubled (Table 15).
- The number of parolees returned to prison for new felony convictions declined 18% between 2010 and 2019. The number of parolees returned to prison for violating the conditions of parole decreased 23% during the same time period (Table 17).
- While 31% of the parolees being supervised were Level 1, 46% of the parolees returned to prison were Level 1. Conversely, 30% of parolees were supervised at Level 4, but only 10% of parolees returned to prison were Level 4 (Table 22).

- Among 2019 returns to prison for violating the conditions of parole, the largest proportion started the violation process with an absconder warrant (43%), followed by a technical warrant (29%) (Table 23).
- At the end of 2019, there were 1,561 parolees from New York who were being supervised out-of-state under the Interstate Compact. This was an increase of 14% since 2015 (Table 24).
- At the end of 2019, there were 1,114 parolees from other states who were being actively supervised in New York under the Interstate Compact. This was a decrease of 6% since 2015 (Table 25).

Section 1 – Parolees Released to Community Supervision

There are four major mechanisms through which parolees are released to parole supervision in the community: 1) Board of Parole decision, 2) Presumptive Release, 3) Conditional Release, and 4) Other Release.

Board releases are the result of the Parole Board making decisions to release parolees from prison to parole supervision. Board releases include releases as a result of Final Deportation and Shock interviews.

Presumptive releases are releases from prison in which the Commissioner of the Department of Corrections and Community Supervision (DOCCS) makes determinations that incarcerated individuals should be released from prison after having served at least 5/6 of their minimum sentences. For these releases, the Board of Parole sets the conditions of parole supervision in the community.

Conditional releases are releases in which incarcerated individuals have reached their conditional release dates (typically 6/7 of a determinate sentence; 2/3 of an indeterminate sentence) and are automatically released from prison on that date, unless good time has been lost while in prison.

The Other Release category includes: being on parole supervision in another state and requesting transfer to New York (Co-op cases), being judicially sentenced to parole supervision (i.e., Judicially Sentenced to the Willard Drug Treatment Campus), being a juvenile offender released to parole supervision directly from The Office of Children and Family Services (OCFS), being placed on parole supervision directly from local jail, and being placed on a specialized sex offender caseload in the community after a determination is made by the court (SIST¹).

- There were 19,684 releases to supervision during 2019, a decrease of 6% from the 20,969 releases in 2018 and a decrease of 18% from the 23,914 releases in 2010 (Table 1).
- In 2019, 6,474 or 33% of releases to community supervision were Board releases. This was a numeric decrease of 6% (-388) since 2010, but an increase in the proportion of Board releases among Total releases (33% vs. 29%). (Table 1).

¹ SIST stands for Strict and Intensive Supervision and Treatment. Sex offender parolees can be placed on this type of community supervision caseload as part of the civil management process in New York. Parolees must be referred (usually by DOCCS) for civil management prior to release from prison or discharge from parole supervision and evaluated by the Office of Mental Health (OMH). If OMH determines that the parolee suffers from a “mental abnormality”, the case is referred to the Attorney General for possible litigation. If the Attorney General proceeds with litigation, the parolee is entitled to a jury trial; a unanimous verdict is required for a parolee to be involuntarily confined or placed under intensive supervision. If the court finds that the parolee warrants Civil Management, but can safely be supervised in the community, he or she will be allowed to live in the community while supervised on a SIST caseload, as long as he or she complies with all the conditions set by the Board of Parole, does not break the law and receives the treatment he or she needs. For additional information on this topic, the following report can be referenced:

https://ag.ny.gov/sites/default/files/somb_2019_annual_report.pdf

- There were 11,826 conditional releases during 2019, which was a decrease of 9% from 2018 and a decrease of 24% from 2010 (Table 1).
- Presumptive releases began in 2003. There were 28 presumptive releases during 2019. This was a decrease of 90% from the 268 presumptive releases in 2010 (Table 1).
- Among Other Releases, the number of Judicially Sanctioned (JS) offender releases increased by 50% from 539 in 2010 to 809 in 2019 (Table 1).
- In 2019, there were 454 Co-Ops released from other states to Community Supervision, representing a decrease of 6% since 2010 (Table 1).
- The number of Juvenile Offender releases decreased by 54% from 102 releases in 2010 to 47 releases in 2019 (Table 1).
- Between 2010 and 2019, the proportion of VFO and A-I Violent Offenders released to community supervision increased from 34% to 43%. During the same period of time, the proportion of Drug Offenders released to community supervision decreased from 34% to 23% (Table 2).
- The COMPAS supervision model was implemented in January 2012. The four supervision levels and the accompanying supervision ratios (25:1, 40:1, 80:1, and 160:1) and reporting requirements were determined based on a number of risk factors, including: risk of absconding, risk of any arrest, and risk of VFO arrest. SIST cases are supervised at a 10:1 ratio and are included in the Level 1 category. Sex offenders and discretionary mental health cases are also supervised at Level 1.
- During 2019, 33% of offenders released to supervision were supervised at Level 1 (25:1), 14% were supervised at Level 2 (40:1), 27% at Level 3 (80:1) and 23% at Level 4 (160:1) (Table 3).
- Among 2019 releases, the Western region had the largest proportion of offenders supervised at Level 1, with 42%. The Queens-LI region had the smallest proportion of offenders supervised at Level 1, with 29% (Table 3).
- Among 2019 releases, the Bronx region had the largest proportion of offenders supervised at Level 4 (30%), while the Western region had the smallest proportion (16%) (Table 3).

TABLE 1: RELEASES TO COMMUNITY SUPERVISION 2010-2019

	<u>2010</u>	<u>2011</u>	<u>2012</u>	<u>2013</u>	<u>2014</u>	<u>2015</u>	<u>2016</u>	<u>2017</u>	<u>2018</u>	<u>2019</u>
Releases to Community Supervision										
Board Releases	6,024	5,673	5,433	4,688	4,663	4,359	4,624	5,004	6,025	6,070
Final Deportations	48	65	54	40	29	23	15	23	19	30
Shock Board	790	868	719	778	659	547	530	503	470	374
Total Board	6,862	6,606	6,206	5,506	5,351	4,929	5,169	5,530	6,514	6,474
<i>Board Percent of Total Releases</i>	<i>29%</i>	<i>29%</i>	<i>27%</i>	<i>25%</i>	<i>25%</i>	<i>24%</i>	<i>25%</i>	<i>27%</i>	<i>31%</i>	<i>33%</i>
Presumptive Release	268	158	80	94	56	35	21	20	21	28
Total Board/Presumptive Release	7,130	6,764	6,286	5,600	5,407	4,964	5,190	5,550	6,535	6,502
<i>Board/Presumptive Percent of Total Releases</i>	<i>30%</i>	<i>29%</i>	<i>28%</i>	<i>25%</i>	<i>25%</i>	<i>24%</i>	<i>25%</i>	<i>27%</i>	<i>31%</i>	<i>33%</i>
Conditional Releases	15,595	15,230	15,298	15,179	14,759	14,064	14,296	13,655	12,944	11,826
<i>Conditional Percent of Total Releases</i>	<i>65%</i>	<i>66%</i>	<i>67%</i>	<i>69%</i>	<i>68%</i>	<i>69%</i>	<i>68%</i>	<i>66%</i>	<i>62%</i>	<i>60%</i>
Co-Ops from Other States	481	515	518	631	540	589	508	548	509	454
Judicially Sanctioned	539	527	586	624	741	763	828	834	881	809
Juvenile Offenders	102	86	70	84	92	62	69	61	59	47
Local Releases	52	27	20	15	22	11	16	14	12	19
SIST	15	21	23	19	22	38	38	33	29	27
Total Other Releases	1,189	1,176	1,217	1,373	1,417	1,463	1,459	1,490	1,490	1,356
<i>Other Percent of Total Releases</i>	<i>5%</i>	<i>5%</i>	<i>5%</i>	<i>6%</i>	<i>7%</i>	<i>7%</i>	<i>7%</i>	<i>7%</i>	<i>7%</i>	<i>7%</i>
GRAND TOTAL RELEASES	23,914	23,170	22,801	22,152	21,583	20,491	20,945	20,695	20,969	19,684

**TABLE 2: ORIGINAL CRIME OF COMMITMENT
RELEASES TO COMMUNITY SUPERVISION 2010 TO 2019**

Calendar Year	A-I Violent and Legislative VFO		Other Coercive		Drug Offenses		Major Property		Other Felony		YO/JO		Total	
	Number	Percent	Number	Percent	Number	Percent	Number	Percent	Number	Percent	Number	Percent	Number	Percent
2010	8,227	34%	1,604	7%	8,085	34%	3,355	14%	1,891	8%	700	3%	23,862	100%
2011	8,613	37%	1,607	7%	7,215	31%	3,085	13%	1,956	9%	667	3%	23,143	100%
2012	8,840	39%	1,726	8%	6,181	27%	3,208	14%	2,106	9%	720	3%	22,781	100%
2013	9,001	41%	1,620	7%	5,498	25%	3,279	15%	2,062	9%	677	3%	22,137	100%
2014	9,094	42%	1,642	8%	5,022	23%	3,256	15%	1,947	9%	600	3%	21,561	100%
2015	8,574	42%	1,636	8%	4,715	23%	3,123	15%	1,871	9%	563	3%	20,482	100%
2016	8,974	43%	1,891	9%	4,665	22%	3,195	15%	1,670	8%	535	3%	20,930	100%
2017	8,648	42%	1,962	9%	4,576	23%	3,172	15%	1,788	9%	535	3%	20,681	100%
2018	8,587	41%	2,036	10%	4,682	22%	3,286	16%	1,868	9%	498	2%	20,957	100%
2019	8,371	43%	1,887	10%	4,299	23%	2,849	14%	1,829	9%	430	2%	19,665	100%

Note: CY 2010 excludes 52 Local Releases. CY 2011 excludes 27 Local Releases. CY 2012 excludes 20 Local Releases. CY 2013 excludes 15 Local Releases. CY 2014 excludes 22 Local Releases. CY 2015 excludes 11 Local Releases. CY 2016 excludes 16 Local Releases. CY 2017 excludes 14 Local Releases. CY 2018 excludes 12 Local Releases. CY 2019 excludes 19 Local Releases.

**TABLE 3: COMPAS SUPERVISION LEVEL BY REGION FOR PAROLEES
RELEASES TO COMMUNITY SUPERVISION IN 2019**

Region	Level 1		Level 2		Level 3		Level 4		Pending		Total	
	Number	Percent	Number	Percent	Number	Percent	Number	Percent	Number	Percent	Number	Percent
Queens-LI	798	29%	402	15%	780	28%	742	27%	49	2%	2,771	100%
Brooklyn	703	37%	142	7%	499	26%	545	28%	36	2%	1,925	100%
Manhattan	590	30%	203	10%	565	29%	556	29%	24	1%	1,938	100%
Bronx	618	31%	186	9%	560	28%	590	30%	33	2%	1,987	100%
Hudson Valley	993	31%	544	17%	840	26%	801	25%	43	1%	3,221	100%
Central NY	1,078	30%	675	19%	1,050	29%	677	19%	84	2%	3,564	100%
Western	1,765	42%	657	16%	1,031	25%	690	16%	49	1%	4,192	100%
Total	6,545	33%	2,809	14%	5,325	27%	4,601	23%	318	2%	19,598	100%

Note: Releases to Willard are included in the Central NY figures.
Note: Does not include offenders in NYC BSSN, Out of State, and unknown regions.

Section 2 – Parolees Under Community Supervision

This section presents information about parolees who were under supervision on December 31 of a particular year. This population reflects parolees under active supervision and, except where specifically reported, excludes parolees who are incarcerated in DOCCS facilities. Parolees on temporary release from prison and in community preparation status are also excluded from the figures.

- On December 31, 2019, the total parolee population was 46,053. Sixty percent (27,685) were streeted, or actively reporting to a parole officer. Out-of-state parolees made up 20% (9,549) of the parolee population. Eleven percent (4,800) were confined in local jails, federal or other facilities or in a DOCCS facility (Table 4).
- Since 2015, the active parolee population under community supervision increased 1% from 35,477 to 35,743. In contrast there was a 15% decrease in the prison population during the same time period (Figure 1).
- On December 31, 2019, there were 761 parolees incarcerated in DOCCS facilities. Sixty-five percent (496) of these individuals were housed in Parole Program Facilities, including Willard, Edgecombe Residential Treatment, Hale Creek PDP, and Orleans PDP (Table 5).
- On December 31, 2019, Property Offenders accounted for the largest proportion (31%) of the 761 incarcerated parolees under custody (Table 6).
- The proportion of Violent Felony Offenders and A-I Violent Offenders among those under community supervision has increased in recent years primarily due to early discharge options for non-violent offenders. As of December 31, 2019 over half (54%) of all offenders under Community Supervision were Violent Offenders while only one-fifth (19%) were Drug Offenders (Table 7).
- The number of parolees under community supervision for drug offenses decreased 42% from 11,913 at the end of 2010 to 6,933 at the end of 2019. In 2010, 31% of parolees were drug offenders, compared to only 19% in 2019 (Table 7).
- Almost half (47%) of the parolees under community supervision on December 31, 2019 were African-American. The median age of parolees was 39 and half (50%) were from New York City. The large majority (93%) of parolees under supervision were male and just over half (53%) had a history of drug abuse (Table 8).
- Among the active parolee population on December 31, 2019, 3,625 or 10% were registered sex offenders (Tables 9A and 9B).
- Among the 2,345 female parolees under community supervision at the end of 2019, 32% were convicted of a Legislative VFO. The next largest crime category was Drug Offenses, which represented 26% of the female parolees (Tables 10A and 10B).

- On December 31, 2019, there were 153 Juvenile Offenders under community supervision. Nearly half (44%) of these Juvenile Offenders were age 25 or older (Table 11).
- On December 31, 2019, 31% of parolees on the street were supervised at COMPAS Supervision Level 1 (25:1), 13% at Level 2 (40:1), 25% at Level 3 (80:1), and 30% at Level 4 (160:1) (Table 12).
- Of the 35,743 active parolees on December 31, 2019, 4% or 1,420 were reported as veterans. The percentage of veterans among streeted parolees on December 31, 2019, was slightly higher at 5% (Table 13).

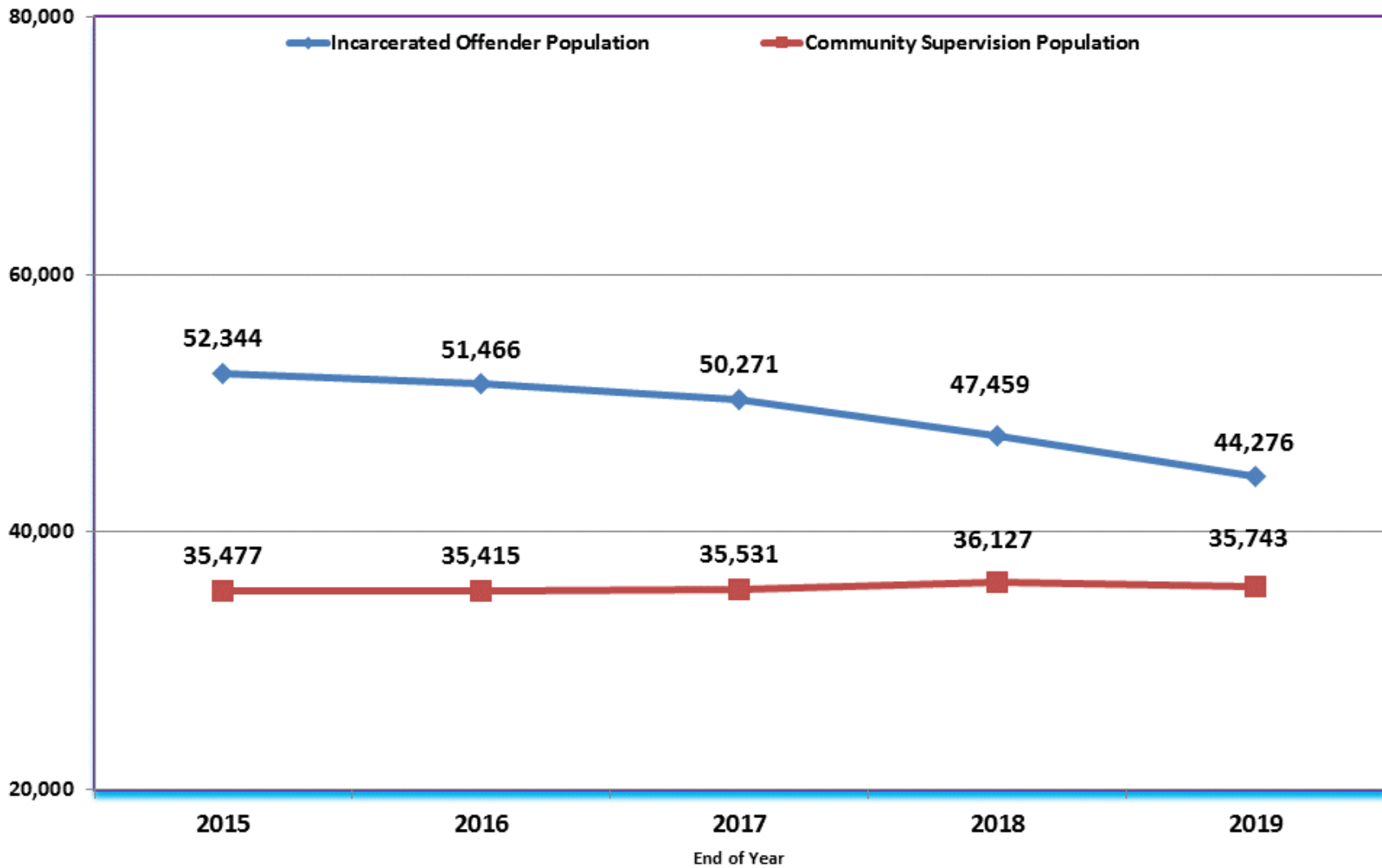
TABLE 4: COMMUNITY SUPERVISION POPULATION ALLOCATION
December 31, 2019

Total Streeted Parolees	27,685	59.6%
Absconders	3,215	7.2%
Other Active ¹	43	0.1%
In Violation Proceedings	4,800	11.0%
Total Active Parolee Population	35,743	77.8%
Incarcerated Parolees in DOCCS Facilities	761	1.7%
Out of State Parolees ²	9,549	20.4%
Total Parolee Population	46,053	100%

¹ Parolees whose deaths have not yet been verified or are in inactive supervision status.

² Parolees who have been deported, transferred to another state via the Interstate Compact or are incarcerated out of state.

**Figure 1. Between 2015 and 2019: Incarcerated Offender Population Down 15%;
Community Supervision Population Up 1%**



**TABLE 5: SECURITY LEVEL AND FACILITY BY GENDER
INCARCERATED PAROLEES UNDER CUSTODY
December 31, 2019**

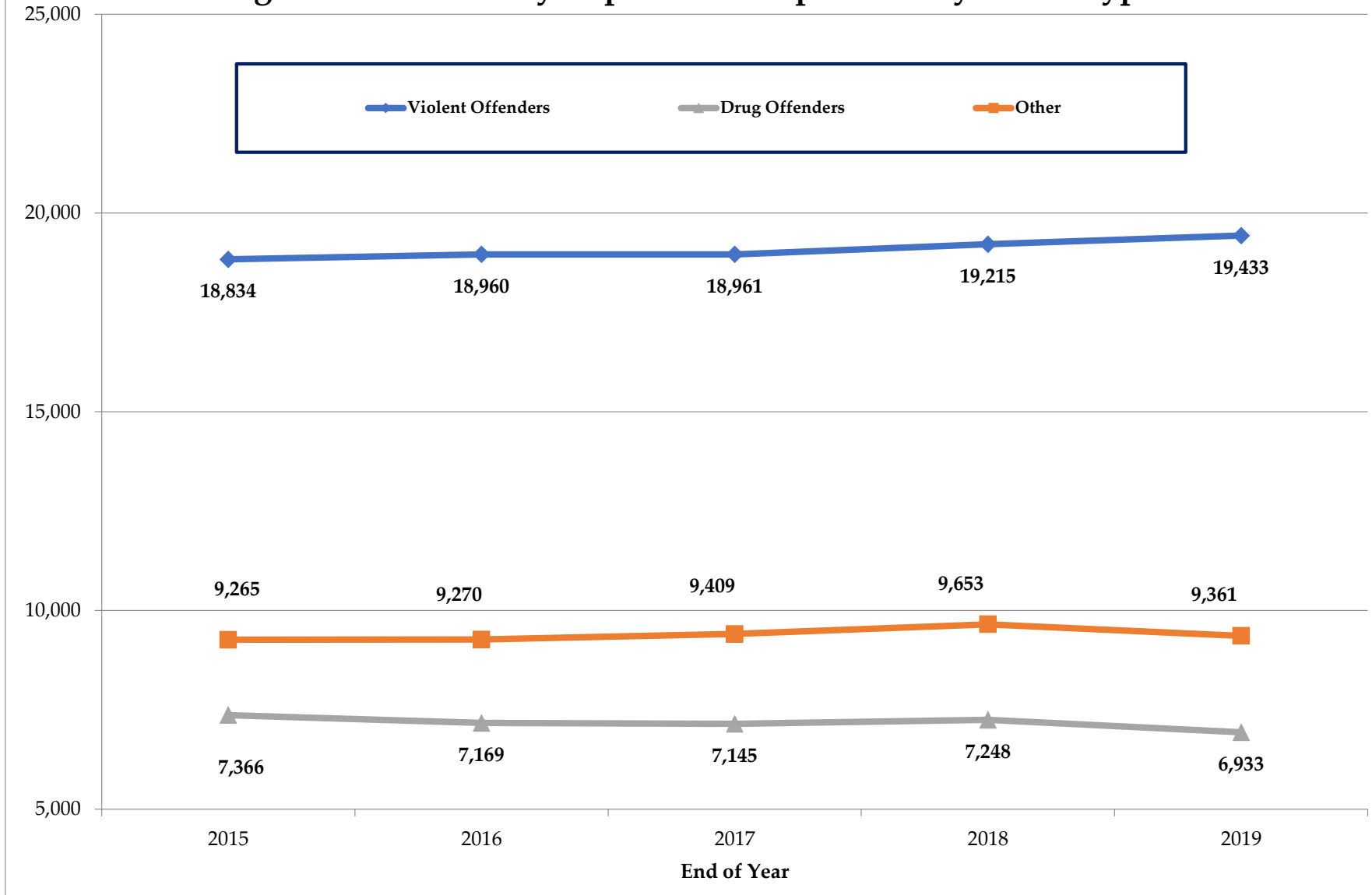
		GENDER		TOTAL
		MALE	FEMALE	
MAXIMUM SECURITY	AUBURN	3	0	3
	BEDFORD HILLS	0	5	5
	CLINTON	2	0	2
	COXSACKIE	2	0	2
	DOWNSTATE	15	0	15
	ELMIRA	15	0	15
	FISHKILL SHU200	5	0	5
	FIVE POINTS	19	0	19
	GREEN HAVEN	12	0	12
	MOHAWK (WALSH)	1	0	1
	SHAWANGUNK	1	0	1
	SULLIVAN	2	0	2
	WENDE	2	0	2
		SUBTOTAL	79	5
MEDIUM SECURITY	ALBION FEMALE	0	3	3
	CAYUGA	1	0	1
	FISHKILL	110	0	110
	FRANKLIN	1	0	1
	GOWANDA	2	0	2
	MARCY	2	0	2
	MID-STATE	19	0	19
	OLEANS	2	0	2
	RIVERVIEW	1	0	1
	TACONIC	0	1	1
	ULSTER	7	0	7
	WOODBURNE	5	0	5
		SUBTOTAL	150	4
MINIMUM SECURITY	ALBION WORK RELEASE	0	7	7
	QUEENSBORO GENERAL	20	0	20
		SUBTOTAL	20	7
PAROLE PROGRAM FACILITY	EDGECOMBE RESIDENTIAL TREATMENT	47	0	47
	HALE CREEK PDP	38	0	38
	ORLEANS PDP	79	0	79
	WILLARD	288	0	288
	WILLARD FEMALE	0	44	44
	SUBTOTAL	452	44	496
GRAND TOTAL		701	60	761

*These individuals were judicially sanctioned to Willard, but were deemed medically unsuitable and are therefore participating in alternative programming at Hale Creek.

**TABLE 6: CRIME BY GENDER
INCARCERATED PAROLEES UNDER CUSTODY ON
December 31, 2019**

COMMITMENT OFFENSE TYPE		GENDER		TOTAL
		MALE	FEMALE	
VIOLENT FELONY	MURDER	0	0	0
	ATTEMPTED MURDER	3	0	3
	MANSLT 1ST, AG 2ND	2	0	2
	RAPE 1ST	20	1	21
	ROBBERY 1ST	11	0	11
	ROBBERY 2ND	23	0	23
	ASSAULT 1ST	3	0	3
	ASSAULT 2ND	9	0	9
	BURGLARY 1ST	4	0	4
	BURGLARY 2ND	19	0	19
	ARSON 1ST, 2ND	0	0	0
	SODOMY 1ST	20	0	20
	SEX AB 1ST, AG 2	44	0	44
	WEAPONS OFFENSES	22	0	22
	KIDNAPPING 1ST, 2ND	1	0	1
	OTHER VFO SEX OFFENSES	17	0	17
	OTHER VIOLENT	2	0	2
	SUBTOTAL	200	1	201
	<i>PERCENT VIOLENT FELONY</i>	<i>29%</i>	<i>2%</i>	<i>26%</i>
	OTHER COERCIVE	OTHER HOMICIDE	1	0
ROBBERY 3RD		15	3	15
ATT ASSAULT 2ND		11	0	11
CONSPIRACY 2,3,4		2	1	3
OTHER WEAPONS		8	0	8
OTHER SEX OFFENSES		39	0	39
OTHER COERCIVE		1	0	1
SUBTOTAL		77	1	78
<i>PERCENT OTHER COERCIVE</i>	<i>11%</i>	<i>2%</i>	<i>10%</i>	
DRUG OFFENSES	DRUG SALE	71	13	84
	DRUG POSSESSION	127	10	137
	SUBTOTAL	198	23	221
<i>PERCENT DRUG OFFENSES</i>	<i>28%</i>	<i>38%</i>	<i>29%</i>	
PROPERTY & OTHER	BURGLARY 3RD	72	10	81
	GRAND LARCENY	31	6	37
	FORGERY	19	3	22
	STOLEN PROPERTY	17	0	17
	DRIVE INTOXICATED	18	6	24
	CONTEMPT 1ST	14	2	16
	ALL OTHER FELONIES	32	8	39
	SUBTOTAL	203	35	238
<i>PERCENT PROPERTY AND OTHER OFFENSES</i>	<i>29%</i>	<i>58%</i>	<i>31%</i>	
YOUTHFUL OFFENDER	SUBTOTAL	23	0	23
<i>PERCENT YOUTHFUL OFFENDER</i>	<i>3%</i>	<i>0%</i>	<i>3%</i>	
GRAND TOTAL	701	60	761	

Figure 2: Community Supervision Population by Crime Type



**TABLE 7: ORIGINAL CRIME OF COMMITMENT
OFFENDERS UNDER COMMUNITY SUPERVISION
December 31, 2019**

December 31	A-I Violent and Legislative VFO		Other Coercive		Drug Offenses		Major Property		Other Felony		YO/JO		Total	
	Number	Percent	Number	Percent	Number	Percent	Number	Percent	Number	Percent	Number	Percent	Number	Percent
2010	16,857	44%	2,065	5%	11,913	31%	4,127	11%	2,276	6%	815	2%	38,053	100%
2011	17,495	47%	2,044	6%	10,587	29%	3,858	10%	2,293	6%	778	2%	37,055	100%
2012	18,133	50%	2,170	6%	9,285	25%	3,851	11%	2,377	6%	760	2%	36,576	100%
2013	18,385	51%	2,070	6%	8,331	23%	3,930	11%	2,493	7%	746	2%	35,955	100%
2014	18,752	53%	2,166	6%	7,693	22%	3,942	11%	2,361	7%	701	2%	35,615	100%
2015	18,834	53%	2,223	6%	7,366	21%	3,964	11%	2,335	7%	743	2%	35,465	100%
2016	18,960	54%	2,671	8%	7,169	20%	3,939	11%	1,982	6%	678	2%	35,399	100%
2017	18,961	53%	2,737	8%	7,145	20%	3,925	11%	2,088	6%	659	2%	35,515	100%
2018	19,215	53%	2,899	8%	7,248	20%	3,983	11%	2,146	6%	625	2%	36,116	100%
2019	19,433	54%	2,849	8%	6,933	19%	3,788	11%	2,156	6%	568	2%	35,727	100%

Note: Table excludes 54 locals on December 31, 2010, 28 locals on December 31, 2011, 23 locals on December 31, 2012, 14 locals on December 31, 2013, 19 locals on December 31, 2014, 12 locals on December 31, 2015, 16 locals on December 31, 2016, 16 locals on December 31, 2017, 11 locals on December 31, 2018, and 16 locals on December 31, 2019.

The data in this table reflects parolees under community supervision in New York state and excludes parolees incarcerated in DOCCS facilities.

The sums of the percentage subtotals may not equal 100% due to rounding.

Major Property includes Burglary 3, Grand Larceny, Forgery and Stolen Property.

TABLE 8: COMMUNITY SUPERVISION OFFENDER FACTS*

The community supervision offender population is largely minority, poorly educated and underemployed. Over half (57%) of parolees live in New York City and Long Island.

December 31, 2019

Ethnicity		Service Needs	
47% - African-American		53% - Drug Abuse	
23% - Hispanic		38% - Alcohol Abuse	
26% - White		47% - Unemployment	
4% - Other		36% - No High School Diploma or Equivalency	
Sex		Residence	
93% - Male		50% - New York City	
7% - Female		7% - Long Island	
Age		43% - Upstate	
Median - 39			
Mean - 41			
Conviction Crime**			
<u>A-I Violent*** and VFO Offenses 54%</u>		<u>Drugs 19%</u>	
13% - Robbery		10% - Sale	
10% - Weapons		9% - Possession	
9% - Burglary		<u>Property/Other 17%</u>	
8% - Assault		5%-Burglary	
8% - Murder/Manslaughter		4% - Larceny	
5% - Sex Offenses		2% - Other theft	
1% - Kidnapping/Arson		2% - DWI	
		4% - Other	
<u>Other Coercive 8%</u>		<u>YO/JO 2%</u>	
2% - Robbery		2% - YO/JO	
6% - Other			

* This information is for parolees under supervision in New York State and excludes parolees incarcerated in New York state correctional facilities.

**All conviction crimes reflect top charge.

***A-1 violent offenses include Murder, Attempted Murder 1st, Arson 1st and Kidnapping 1st. VFOs include other legislatively-designated violent felony offenses.

TABLE 9A: COMMUNITY SUPERVISION OFFENDER CHARACTERISTICS (NUMBERS)
December 31, 2019

The following table presents the characteristics of offenders supervised within New York State by Region. The figures exclude temporary release, community preparation and parolees incarcerated in DOCCS facilities.

	QUEENS/ LI	BROOKLYN	NYC ABSCONDERS*	MANHATTAN	BRONX	HUDSON VALLEY	CENTRAL NY	WESTERN NY	DOWNSTATE PVU	UPSTATE PVU	IN-STATE TOTAL
GENDER											
Male	4,865	3,889	1,937	3,297	4,042	3,939	3,441	5,135	1,292	1,561	33,398
Female	300	154	139	177	183	343	435	499	30	85	2,345
AGE											
16-17 years	0	1	0	2	2	2	5	5	1	4	22
18-20 years	40	25	8	22	29	34	44	62	26	32	322
21-29 years	1,058	851	184	650	832	907	824	1,232	370	509	7,417
30-39 years	1,749	1,187	354	979	1,201	1,449	1,413	1,948	388	591	11,259
40-49 years	1,081	847	438	751	909	893	798	1,213	254	314	7,498
50-59 years	889	845	572	717	877	669	534	777	222	159	6,261
60 years or older	348	287	520	353	375	328	258	397	61	37	2,964
RACE/ETHNICITY											
African American	2,586	2,704	813	1,869	2,081	1,813	960	2,451	744	810	16,831
Hispanic	1,184	939	988	1,207	1,819	711	288	610	445	203	8,394
White	1,110	268	185	300	189	1,627	2,513	2,441	80	580	9,293
Native American	69	21	26	27	49	42	59	81	18	23	415
Asian	73	23	28	13	10	17	16	16	5	3	204
Other	129	80	32	52	70	57	25	32	28	18	523
Unknown	14	8	4	6	7	15	15	3	2	9	83
DRUG ABUSE HISTORY											
Yes	2,641	1,435	1,133	1,287	1,980	2,505	2,533	3,694	624	1,084	18,916
No	2,392	2,528	637	2,109	2,182	1,650	1,265	1,777	652	491	15,683
Unknown	132	80	306	78	63	127	78	163	46	71	1,144
ALCOHOL ABUSE HISTORY											
Yes	1,809	933	769	796	1,215	1,946	1,939	3,068	365	797	13,637
No	3,223	3,029	985	2,600	2,947	2,209	1,859	2,401	911	778	20,942
Unknown	133	81	322	78	63	127	78	165	46	71	1,164
EDUCATION											
No Degree	1,634	1,571	1,136	1,391	1,832	1,217	1,065	1,730	634	528	12,738
High School Grad/GED	3,239	2,261	866	1,872	2,178	2,807	2,674	3,697	631	1,083	21,308
At Least Some College	292	211	74	211	215	258	137	207	57	35	1,697
ORIGINAL CONVICTION OFFENSE											
A-1 Violent	275	361	30	184	311	174	82	247	23	16	1,703
Legislative VFO	2,680	2,198	783	1,864	2,253	1,963	1,540	2,933	769	747	17,730
Other Coercive	424	274	114	255	340	375	373	467	105	123	2,850
Drug Offenses	870	535	870	725	820	874	867	851	190	337	6,939
Major Property	571	457	175	288	305	462	564	555	158	255	3,790
Other Felony	271	159	71	124	139	374	381	478	45	120	2,162
Youthful Offender	65	41	29	30	42	53	64	93	30	48	495
Juvenile Offender	9	18	4	4	15	7	5	10	2	0	74
SEX OFFENDER REGISTRY OFFENSE											
Yes	318	139	82	375	277	577	773	831	90	163	3,625
No	4,847	3,904	1,994	3,099	3,948	3,705	3,103	4,803	1,232	1,483	32,118
EMPLOYMENT STATUS**											
Employed	2,028	1,551	N/A	1,033	1,482	1,858	1,398	2,307	N/A	N/A	11,657
Unemployed	1,982	1,653	N/A	1,611	1,844	1,695	1,850	2,354	N/A	N/A	12,989
Unable to be Employed	174	165	N/A	199	237	209	287	361	N/A	N/A	1,632
Unknown	229	189	N/A	92	127	210	164	304	N/A	N/A	1,315
TOTAL STREETED	4,413	3,558	N/A	2,935	3,690	3,972	3,699	5,326	31 ***	19 ***	27,643
TOTAL CASES	5,165	4,043	2,076	3,474	4,225	4,282	3,876	5,634	1,322	1,646	35,743 ***

Notes:

* NYC Absconder Caseloads assigned to the Bureau of Special Services.

** Employment status is based on active offenders under supervision only so this information is not available for absconders.

*** Excludes 16 Local releases.

TABLE 9B: COMMUNITY SUPERVISION OFFENDER CHARACTERISTICS (PERCENTS)
December 31, 2019

The following table presents the characteristics of offenders supervised within New York State by Region. The figures exclude temporary release, community preparation and incarcerated parolees and have been adjusted for missing information.

	QUEENS/ LI	BROOKLYN	NYC ABSCONDERS*	MANHATTAN	BRONX	HUDSON VALLEY	CENTRAL NY	WESTERN NY	DOWNSTATE PVU	UPSTATE PVU	IN-STATE TOTAL
GENDER											
Male	94%	96%	93%	95%	96%	92%	89%	91%	98%	95%	93%
Female	6%	4%	7%	5%	4%	8%	11%	9%	2%	5%	7%
AGE											
16-17 years	0%	<1%	0%	<1%	<1%	<1%	<1%	<1%	<1%	<1%	<1%
18-20 years	1%	1%	<1%	1%	1%	1%	1%	1%	2%	2%	1%
21-29 years	20%	21%	9%	19%	20%	21%	21%	22%	28%	31%	21%
30-39 years	34%	29%	17%	28%	28%	34%	36%	35%	29%	36%	31%
40-49 years	21%	21%	21%	22%	22%	21%	21%	22%	19%	19%	21%
50-59 years	17%	21%	28%	21%	21%	16%	14%	14%	17%	10%	18%
60 years or older	7%	7%	25%	10%	9%	8%	7%	7%	5%	2%	8%
RACE/ETHNICITY											
African American	50%	67%	39%	54%	49%	42%	25%	44%	56%	49%	47%
Hispanic	23%	23%	48%	35%	43%	17%	7%	11%	34%	12%	23%
White	21%	7%	9%	9%	4%	38%	65%	43%	6%	35%	26%
Native American	1%	1%	1%	1%	1%	1%	2%	1%	1%	1%	1%
Asian	1%	1%	1%	<1%	<1%	<1%	<1%	<1%	<1%	<1%	1%
Other	2%	2%	2%	1%	2%	1%	1%	1%	2%	1%	1%
Unknown	<1%	<1%	<1%	<1%	<1%	<1%	<1%	<1%	<1%	<1%	<1%
DRUG ABUSE HISTORY											
Yes	51%	35%	55%	37%	47%	59%	65%	66%	47%	66%	53%
No	46%	63%	31%	61%	52%	39%	33%	32%	49%	30%	44%
Unknown	3%	2%	15%	2%	1%	3%	2%	3%	3%	4%	3%
ALCOHOL ABUSE HISTORY											
Yes	35%	23%	37%	23%	29%	45%	50%	54%	28%	48%	38%
No	62%	75%	47%	75%	70%	52%	48%	43%	69%	47%	59%
Unknown	3%	2%	16%	2%	1%	3%	2%	3%	3%	4%	3%
EDUCATION											
No Degree	32%	39%	55%	40%	43%	28%	27%	31%	48%	32%	36%
High School Grad/GED	63%	56%	42%	54%	52%	66%	69%	66%	48%	66%	60%
At Least Some College	6%	5%	4%	6%	5%	6%	4%	4%	4%	2%	5%
ORIGINAL CONVICTION OFFENSE											
A-1 Violent	5%	9%	1%	5%	7%	4%	2%	4%	2%	1%	5%
Legislative VFO	52%	54%	38%	54%	53%	46%	40%	52%	58%	45%	50%
Other Coercive	8%	7%	5%	7%	8%	9%	10%	8%	8%	7%	8%
Drug Offenses	17%	13%	42%	21%	19%	20%	22%	15%	14%	20%	19%
Major Property	11%	11%	8%	8%	7%	11%	15%	10%	12%	15%	11%
Other Felony	5%	4%	3%	4%	3%	9%	10%	8%	3%	7%	6%
Youthful Offender	1%	1%	1%	1%	1%	1%	2%	2%	2%	3%	1%
Juvenile Offender	<1%	<1%	<1%	<1%	<1%	<1%	<1%	<1%	<1%	0%	<1%
SEX OFFENDER REGISTRY OFFENSE											
Yes	6%	3%	4%	11%	7%	13%	20%	15%	7%	10%	10%
No	94%	97%	96%	89%	93%	87%	80%	85%	93%	90%	90%
EMPLOYMENT STATUS**											
Employed	46%	44%	N/A	35%	40%	47%	38%	43%	N/A	N/A	42%
Unemployed	45%	46%	N/A	55%	50%	43%	50%	44%	N/A	N/A	47%
Unable to be Employed	4%	5%	N/A	7%	6%	5%	8%	7%	N/A	N/A	6%
Unknown	5%	5%	N/A	3%	3%	5%	4%	6%	N/A	N/A	5%
TOTAL CASES	5,165	4,043	2,076	3,474	4,225	4,282	3,876	5,634	1,322	1,646	35,743 ***
REGIONAL PERCENT	14%	11%	6%	10%	12%	12%	11%	16%	4%	5%	100% ***

Notes:

* NYC Absconder Caseloads assigned to the Warrant Squads and Bureau of Special Services.

** Employment status is based on streeted offenders under supervision only so this information is not available for absconders.

*** Excludes 11 Local releases.

**** Subtotal percentages may not equal 100% due to rounding.

TABLE 10A: CHARACTERISTICS OF FEMALE OFFENDERS UNDER COMMUNITY SUPERVISION (NUMBERS)

December 31, 2019

The following table presents the characteristics of offenders supervised within New York State by Region. The figures exclude temporary release, community preparation and parolees incarcerated in DOCCS facilities.

	QUEENS/ LI	BROOKLYN	NYC ABSCONDERS*	MANHATTAN	BRONX	HUDSON VALLEY	CENTRAL NY	WESTERN NY	DOWNSTATE PVU	UPSTATE PVU	IN-STATE TOTAL
AGE											
16-17 years	0	0	0	0	0	0	1	2	0	0	3
18-20 years	0	0	1	1	2	2	5	1	0	1	13
21-29 years	68	49	14	33	36	77	95	110	6	23	511
30-39 years	101	46	26	53	56	119	177	206	11	35	830
40-49 years	64	28	30	39	39	79	88	105	6	18	496
50-59 years	49	25	41	31	40	48	54	56	7	7	358
60 years or older	18	6	27	20	10	18	15	19	0	1	134
RACE/ETHNICITY											
African American	123	101	57	102	103	91	72	135	18	25	827
Hispanic	43	30	51	41	57	31	16	23	6	3	301
White	123	21	27	29	20	213	339	330	6	53	1,161
Native American	0	1	0	0	1	1	6	7	0	3	19
Asian	3	0	0	2	1	2	0	1	0	0	9
Other	7	0	3	1	1	4	2	2	0	1	21
Unknown	1	1	1	2	0	1	0	1	0	0	7
DRUG ABUSE HISTORY											
Yes	156	52	85	71	96	225	317	354	18	61	1,435
No	137	100	34	103	80	110	109	132	11	16	832
Unknown	7	2	20	3	7	8	9	13	1	8	78
ALCOHOL ABUSE HISTORY											
Yes	113	42	56	45	61	165	231	289	15	39	1,056
No	180	110	62	129	115	170	195	197	14	38	1,210
Unknown	7	2	21	3	7	8	9	13	1	8	79
EDUCATION											
No Degree	81	68	83	63	86	96	88	118	13	15	711
High School Grad/GED	176	76	49	96	86	221	318	340	13	68	1,443
At Least Some College	43	10	7	18	11	26	29	41	4	2	191
ORIGINAL CONVICTION OFFENSE											
A-1 Violent	16	8	0	9	10	9	9	10	0	0	71
Legislative VFO	118	77	27	73	90	97	91	156	14	13	756
Other Coercive	29	10	11	19	19	31	35	35	4	4	197
Drug Offenses	47	21	80	37	38	90	138	121	5	27	604
Major Property	66	31	16	30	17	73	98	101	5	31	468
Other Felony	23	7	4	6	7	41	58	68	2	9	225
Youthful Offender	0	0	1	2	1	2	6	8	0	1	21
Juvenile Offender	1	0	0	1	1	0	0	0	0	0	3
SEX OFFENDER REGISTRY OFFENSE											
Yes	6	0	0	2	1	7	15	19	2	3	55
No	294	154	139	175	182	336	420	480	28	82	2,290
EMPLOYMENT STATUS**											
Employed	111	63	N/A	48	56	130	137	180	N/A	N/A	725
Unemployed	128	60	N/A	86	82	164	250	239	N/A	N/A	1,009
Unable to be Employed	14	10	N/A	15	12	20	22	44	N/A	N/A	137
Unknown	12	6	N/A	5	9	14	16	19	N/A	N/A	81
TOTAL STREETED	265	139	N/A	154	159	328	425	482	0 ***	2 ***	1,954
TOTAL CASES	300	154	139	177	183	343	435	499	30	85	2,345 ***

Notes:

* NYC Absconder Caseloads assigned to the Warrant Squads and Bureau of Special Services.

** Employment status is based on streeted offenders under supervision only so this information is not available for absconders.

*** Includes 4 Local releases.

TABLE 10B: CHARACTERISTICS OF FEMALE OFFENDERS UNDER COMMUNITY SUPERVISION (PERCENTS)

December 31, 2019

The following table presents the characteristics of offenders supervised within New York State by Region. The figures exclude temporary release, community preparation and incarcerated parolees and have been adjusted for missing information.

	QUEENS/ LI	BROOKLYN	NYC ABSCONDERS*	MANHATTAN	BRONX	HUDSON VALLEY	CENTRAL NY	WESTERN NY	DOWNSTATE PVU	UPSTATE PVU	IN-STATE TOTAL
AGE											
16-17 years	0%	0%	0%	0%	0%	0%	<1%	<1%	0%	0%	<1%
18-20 years	0%	0%	1%	1%	1%	1%	1%	<1%	0%	1%	1%
21-29 years	23%	32%	10%	19%	20%	22%	22%	22%	20%	27%	22%
30-39 years	34%	30%	19%	30%	31%	35%	41%	41%	37%	41%	35%
40-49 years	21%	18%	22%	22%	21%	23%	20%	21%	20%	21%	21%
50-59 years	16%	16%	29%	18%	22%	14%	12%	11%	23%	8%	15%
60 years or older	6%	4%	19%	11%	5%	5%	3%	4%	0%	1%	6%
RACE/ETHNICITY											
African American	41%	66%	41%	58%	56%	27%	17%	27%	60%	29%	35%
Hispanic	14%	19%	37%	23%	31%	9%	4%	5%	20%	4%	13%
White	41%	14%	19%	16%	11%	62%	78%	66%	20%	62%	50%
Native American	0%	1%	0%	0%	1%	<1%	1%	1%	0%	4%	1%
Asian	1%	0%	0%	1%	1%	1%	0%	<1%	0%	0%	0%
Other	2%	0%	2%	1%	1%	1%	1%	<1%	0%	1%	1%
Unknown	<1%	1%	1%	1%	0%	<1%	0%	<1%	0%	0%	<1%
DRUG ABUSE HISTORY											
Yes	52%	34%	61%	40%	52%	66%	73%	71%	60%	72%	61%
No	46%	65%	24%	58%	44%	32%	25%	26%	37%	19%	35%
Unknown	2%	1%	14%	2%	4%	2%	2%	3%	3%	9%	3%
ALCOHOL ABUSE HISTORY											
Yes	38%	27%	40%	25%	33%	48%	53%	58%	50%	46%	45%
No	60%	71%	45%	73%	63%	50%	45%	39%	47%	45%	52%
Unknown	2%	1%	15%	2%	4%	2%	2%	3%	3%	9%	3%
EDUCATION											
No Degree	27%	44%	60%	36%	47%	28%	20%	24%	43%	18%	30%
High School Grad/GED	59%	49%	35%	54%	47%	64%	73%	68%	43%	80%	62%
At Least Some College	14%	6%	5%	10%	6%	8%	7%	8%	13%	2%	8%
ORIGINAL CONVICTION OFFENSE											
A-1 Violent	5%	5%	0%	5%	5%	3%	2%	2%	0%	0%	3%
Legislative VFO	39%	50%	19%	41%	49%	28%	21%	31%	47%	15%	32%
Other Coercive	10%	6%	8%	11%	10%	9%	8%	7%	13%	5%	8%
Drug Offenses	16%	14%	58%	21%	21%	26%	32%	24%	17%	32%	26%
Major Property	22%	20%	12%	17%	9%	21%	23%	20%	17%	36%	20%
Other Felony	8%	5%	3%	3%	4%	12%	13%	14%	7%	11%	10%
Youthful Offender	0%	0%	1%	1%	1%	1%	1%	2%	0%	1%	1%
Juvenile Offender	<1%	0%	0%	1%	1%	0%	0%	0%	0%	0%	<1%
SEX OFFENDER REGISTRY OFFENSE											
Yes	2%	0%	0%	1%	1%	2%	3%	4%	7%	4%	2%
No	98%	100%	100%	99%	99%	98%	97%	96%	93%	96%	98%
EMPLOYMENT STATUS**											
Employed	42%	45%	N/A	31%	35%	40%	32%	37%	N/A	N/A	37%
Unemployed	48%	43%	N/A	56%	52%	50%	59%	50%	N/A	N/A	52%
Unable to be Employed	5%	7%	N/A	10%	8%	6%	5%	9%	N/A	N/A	7%
Unknown	5%	4%	N/A	3%	6%	4%	4%	4%	N/A	N/A	4%
TOTAL CASES	300	154	139	177	183	343	435	499	30	85	2,345 ***
REGIONAL PERCENT	13%	7%	6%	8%	8%	15%	19%	21%	1%	4%	100% ***

Notes:

* NYC Absconder Caseloads assigned to the Warrant Squads and Bureau of Special Services.

** Employment status is based on streeted offenders under supervision only so this information is not available for absconders.

*** Includes 4 Local releases.

*** Subtotal percentages may not equal 100% due to rounding.

Table 11: CHARACTERISTICS OF JUVENILE OFFENDERS UNDER COMMUNITY SUPERVISION
December 31, 2019

The following table presents the characteristics of Juvenile Offenders supervised within New York State by Region. The figures exclude temporary release, community preparation and unassigned cases and have been adjusted for missing information.

	QUEENS/ LI	BROOKLYN	NYC ABSCONDERS*	MANHATTAN	BRONX	HUDSON VALLEY	CENTRAL NY	WESTERN NY	DOWNSTATE PVU	UPSTATE PVU	IN-STATE TOTAL
GENDER											
Male	12	27	8	11	22	12	11	20	11	10	144
Female	1	1	1	1	3	0	0	2	0	0	9
TOTAL GENDER	13	28	9	12	25	12	11	22	11	10	153
AGE											
16-17 years	0	1	0	1	2	2	3	4	1	4	18
18-20 years	3	6	1	6	6	2	2	5	7	5	43
21-22 years	1	1	0	1	2	2	1	2	1	1	12
23-24 years	3	4	0	1	1	0	0	3	0	0	12
25 years or Older	6	16	8	3	14	6	5	8	2	0	68
TOTAL AGE	13	28	9	12	25	12	11	22	11	10	153
RACE/ETHNICITY											
African American	7	24	4	9	12	8	8	15	7	7	101
Hispanic	5	2	2	2	12	4	0	2	4	3	36
White	1	2	0	0	1	0	3	5	0	0	12
Native American	0	0	0	0	0	0	0	0	0	0	0
Asian	0	0	1	0	0	0	0	0	0	0	1
Other	0	0	2	1	0	0	0	0	0	0	3
Unknown	0	0	0	0	0	0	0	0	0	0	0
TOTAL RACE/ETHNICITY	13	28	9	12	25	12	11	22	11	10	153
DRUG ABUSE HISTORY											
Yes	6	8	7	7	13	6	6	15	8	4	80
No	7	20	2	5	12	6	5	6	3	6	72
Unknown	0	0	0	0	0	0	0	1	0	0	1
TOTAL DRUG ABUSE	13	28	9	12	25	12	11	22	11	10	153
ALCOHOL ABUSE HISTORY											
Yes	5	6	6	4	6	2	6	14	6	4	59
No	8	22	3	8	19	10	5	7	5	6	93
Unknown	0	0	0	0	0	0	0	1	0	0	1
TOTAL ALCOHOL ABUSE	13	28	9	12	25	12	11	22	11	10	153
EMPLOYMENT STATUS**											
Employed	7	13	0	6	11	6	4	8	0	0	55
Unemployed	3	14	7	3	13	5	5	12	11	10	83
Unable to be Employed	2	1	0	3	1	1	1	1	0	0	10
TOTAL EMPLOYMENT	12	28	7	12	25	12	10	21	11	10	148
EDUCATION											
Grade School Only	2	12	3	2	9	7	4	4	0	0	43
Some High School	0	0	0	0	0	0	0	1	0	0	1
High School Diploma or Equivalency	0	1	0	2	1	0	0	1	0	0	5
Some College	1	2	0	0	0	0	0	1	0	0	4
Unknown	0	0	0	0	0	0	0	1	0	0	1
Some College	10	13	6	8	15	5	7	14	11	10	99
TOTAL EDUCATION	13	28	9	12	25	12	11	22	11	10	153
SEX OFFENDER REGISTRY OFFENSE											
Yes	1	0	0	0	0	0	0	2	0	1	4
No	12	28	9	12	25	12	11	20	11	9	149
TOTAL SEX OFFENDER	13	28	9	12	25	12	11	22	11	10	153
TOTAL CASES	13	28	9	12	25	12	11	22	11	10	153

Notes:

The table represents Juvenile Offenders released from OCFS and DOCCS facilities.

* NYC Absconder Caseloads assigned to the Warrant Squads and Bureau of Special Services.

** Employment status is based on streeted offenders under supervision only.

TABLE 12: COMPAS SUPERVISION LEVEL BY REGION FOR PAROLEES IN THE COMMUNITY
December 31, 2019

	Level 1		Level 2		Level 3		Level 4		Pending		Total	
	Number	Percent	Number	Percent	Number	Percent	Number	Percent	Number	Percent	Number	Percent
Queens-LI	1,072	26%	653	16%	1,126	27%	1,272	31%	45	1%	4,168	100%
Brooklyn	1,001	26%	435	12%	1,028	27%	1,268	34%	50	1%	3,782	100%
Manhattan	1,046	33%	292	9%	771	24%	1,010	32%	40	1%	3,159	100%
Bronx	1,230	34%	515	14%	838	23%	1,038	28%	34	1%	3,655	100%
Hudson Valley	925	28%	513	15%	863	26%	1,022	30%	36	1%	3,359	100%
Central NY	1,433	34%	618	15%	1,106	26%	1,061	25%	19	0%	4,237	100%
Western	1,783	34%	692	13%	1,223	23%	1,477	28%	39	1%	5,214	100%
Total	8,490	31%	3,718	13%	6,955	25%	8,148	30%	263	1%	27,574	100%

Note: this table reflects parolees supervised on the street in New York state and excludes those in the violation process, incarcerated in DOCCS facilities and out of state or in ICE custody, and absconders at large.

Note: Percentage totals may not equal 100% due to rounding.

TABLE 13: VETERAN STATUS BY GENDER FOR PAROLEES
December 31, 2019

Veteran Status	Male			Female			Total		
	Non Veteran	Veteran	Total	Non Veteran	Veteran	Total	Non Veteran	Veteran	Total
Active Parolee Population	32,012	1,386	33,398	2,311	34	2,345	34,323	1,420	35,743
<i>Streeted Parolees*</i>	24,514	1,217	25,731	1,925	29	1,954	26,439	1,246	27,685
Incarcerated Parolees	682	19	701	59	1	60	741	20	761
Total	32,694	1,405	34,099	2,370	35	2,405	35,064	1,440	36,504
Active Parolee Population	95.9%	4.1%	100.0%	98.6%	1.4%	100.0%	96.0%	4.0%	100.0%
<i>Streeted Parolees*</i>	95.3%	4.7%	100.0%	98.5%	1.5%	100.0%	95.5%	4.5%	100.0%
Incarcerated Parolees	97.3%	2.7%	100.0%	98.3%	1.7%	100.0%	97.4%	2.6%	100.0%
Total	95.9%	4.1%	100.0%	98.5%	1.5%	100.0%	96.1%	3.9%	100.0%

*Streeted parolees are a subset of active parolees and represent parolees currently supervised in the community.

Section 3 - Violation Process

There are three major outcomes associated with violations of the conditions of parole supervision: return to prison, placement in an alternative program, and restoration to the community. A parolee can be ordered to return to prison to serve a time assessment imposed at a parole revocation hearing. It is possible that a parolee will serve the full time assessment in local jail rather than prison because he or she was also facing local criminal charges. Another sanction that can be imposed for the violation of parole supervision is placement in an alternative program, such as drug treatment at the Willard Drug Treatment Campus. Finally, a parolee can have his or her parole supervision revoked, but be restored to community supervision, frequently with an additional condition to participate in specified programming in the community.

- Of the 16,253 warrants issued in 2019, 45% were issued to parolees supervised at Level 1, 22% at Level 2, 22% at Level 3 and 8% at Level 4. Nearly half (44%) of the parolees under supervision were supervised at Level 1 or 2, but over two-thirds (67%) of warrants issued were to individuals supervised at Levels 1 or 2. Three-quarters (75%) of technical warrants were issued to Level 1 or 2 parolees (Table 14).
- The number of ultimate violation process outcomes for parole violators with sustained charges decreased by 4%, from 12,822 in 2018 to 12,270 in 2019 (Table 15).
- In 2019, the majority (71%) of violation outcomes were ordered to prison, Willard or an Alternative 90 or 45 Day Program², while 29% were revoked and restored to the street or a program in the community (Table 15).
- Since 2015, parolees who had a parole violation that resulted in the revocation of parole supervision and return to prison consistently made up the largest category of violation process outcomes. In 2019, 50% of violations resulted in a decision of Revoke and Ordered Returned to Prison. This was a decrease from 62% in 2015 (Table 15).
- Between 2015 and 2019, the number of violations resulting in parolees being returned to prison decreased by 18% (Table 15).
- Between 2015 and 2019, the number of violations that were revoked and restored increased by 104% (Table 15).
- In 2015, 24% of violations resulted in placement at Willard (including the Alt 90 program) or in the Edgecombe Alt 45 program. In 2019, the proportion of violations resulting in placement in these programs decreased to 21% (Table 15).

² Alternative 90 and 45 Day Programs include violators participating in alternative drug treatment programs at both the Willard Drug Treatment Campus and Edgecombe Residential Treatment Facility as DOCCS inmates.

TABLE 14: 2019 WARRANTS ISSUED BY SUPERVISION LEVEL

	Type of Warrant							
	Absconder		New Arrest		Technical		Total	
Supervision Level	Number	Percent	Number	Percent	Number	Percent	Number	Percent
1 (25:1)	2,542	40%	2,236	42%	2,527	55%	7,305	45%
2 (40:1)	1,515	24%	1,075	20%	913	20%	3,503	22%
3 (80:1)	1,593	25%	1,287	24%	767	17%	3,647	22%
4 (160:1)	685	11%	698	13%	353	8%	1,736	8%
Pending	26	0%	22	0%	14	0%	62	0%
TOTAL	6,361	100%	5,318	100%	4,574	100%	16,253	100%

Supervision Level for Parolees in the Community	
December 31, 2019	
1 (25:1)	31%
2 (40:1)	13%
3 (80:1)	25%
4 (160:1)	30%
Pending	1%
TOTAL	100%

*Percentage total may not equal 100% due to rounding.

**TABLE 15: ULTIMATE DISPOSITIONS FOR VIOLATIONS
WITH CHARGES SUSTAINED
2015-2019**

	2015		2016		2017		2018		2019	
	Number	Percent	Number	Percent	Number	Percent	Number	Percent	Number	Percent
Revoke and Ordered Returned to Prison*	7,504	61.8%	7,375	58.2%	6,766	55.2%	6,755	52.7%	6,123	49.9%
Revoke and Restore to Willard - Mandatory	904	7.4%	952	7.5%	889	7.3%	794	6.2%	717	5.8%
Revoke and Restore to Willard - Voluntary	143	1.2%	143	1.1%	159	1.3%	123	1.0%	112	0.9%
Alternative 90 Day Program	1,758	14.5%	1,887	14.9%	1,723	14.1%	1,485	11.6%	1,687	13.7%
Alternative 45 Day Program	112	0.9%	188	1.5%	217	1.8%	127	1.0%	115	0.9%
TOTAL ORDERED TO PRISON, WILLARD OR ALT PROGRAM	10,421	85.8%	10,545	83.2%	9,754	79.6%	9,284	72.4%	8,754	71.3%
Revoke and Restore to Street or Program	1,720	14.2%	2,132	16.8%	2,498	20.4%	3,538	27.6%	3,516	28.7%
TOTAL OUTCOMES	12,141	100%	12,677	100%	12,252	100%	12,822	100%	12,270	100%

Revoke and Restore to Street - Time Served	464	476	412	485	503
---	-----	-----	-----	-----	-----

Notes: *Revoke and Ordered Returned to Prison includes some cases that were ultimately restored to supervision after serving the complete time assessment while in local jail, with no return to prison. The subset of these case is presented immediately above in the Revoke and Restore to Street - Time Served category.

Alternative 90 and 45 Day Programs include violators participating in alternative drug treatment programs at both Willard Drug Treatment Campus and Edgecombe Residential Treatment Facility as DOCCS inmates.

Cases included in the table had their VIOLATORS record closed during the year reported.

Section 4 – Parolees Removed from Community Supervision

Parolees are removed from community supervision as a result of being returned to prison for violating the conditions of release, being convicted of a new offense, or being successfully discharged. Parolees are successfully discharged after reaching their Maximum Expiration date, thereby completing their sentence, or prior to the completion of their sentence through one of the early discharge mechanisms, including Merit Termination³, Mandatory Termination⁴, and Board Three Year Discharge⁵.

- In 2019, 59% of parolees removed from Community Supervision were discharged after successfully completing the terms of supervision. This was a small increase from 57% in 2018 (Table 16).
- Twenty-one percent of parolees discharged in 2019 received an early discharge by way of either Merit or Mandatory Termination of sentence. This was a slight increase from 2010, when 19% of parolees discharged received either a Merit or Mandatory Merit discharge (Table 16).
- In 2019, 41% of parolees removed from Community Supervision were returned to prison. This was a slight decrease from 43% in 2018 (Table 16).
- The number of parolees returned to prison for new felony convictions declined 18% since 2010, from 1,538 to 1,256 in 2019 (Table 16).
- In 2019, 7,037 (14%) of the 49,651 parolees who spent time under active supervision were returned to prison for violations of the conditions of parole, a decrease of 23% from the 9,087 returned in 2010 (Table 17).
- Among the 49,651 parolees who spent time under active supervision in 2019, 3% were returned to prison with new court convictions, which has been consistent over the last 10 years (Table 17).
- Between 2010 and 2019, the proportion of A-I Violent/Legislative VFO offenders among parolees returned with new convictions increased from 41% to 48%, while the proportion of Drug Offenders decreased from 32% to 25%. This is consistent with the changes in the representation of these offenses among the supervised population (Table 18).

³ DOCCS has the discretionary authority to discharge eligible non-violent offenders from their sentence after either one or two continuous years of unrevoked supervision, depending upon the felony class of the instant offense.

⁴ For those under DOCCS community supervision for a felony drug conviction, a mandatory termination of sentence must be granted, by law, after either two or three continuous years of unrevoked suspension, with the time period dependent upon the felony class of the instant offense.

⁵ The Board of Parole has the authority to grant discharge prior to the expiration of sentence to statutorily eligible offenders under DOCCS community supervision following three continuous years of unrevoked suspension.

- The number of Drug Offenders returned to prison after conviction of a new felony has decreased by 37% since 2010. This reflects the combined impact of decreases in the drug offender population under supervision and significant numbers of drug offenders returned for rule violations before they commit new crimes.
- Similar to returns for new convictions, between 2010 and 2019, the proportion of A-I Violent/Legislative VFO offenders amongst rule violators returned to prison has steadily increased from 36% to 45%, while the proportion of Drug Offenders has decreased from 34% to 16% (Table 20).
- While 44% of parolees under supervision in the community on December 31, 2019 were supervised at Level 1 or 2, 68% of parolees returned to prison were supervised at Levels 1 or 2 (Table 22).
- Absconder warrants made up the highest proportion of returns to prison for violating conditions of parole between 2016 and 2019 at approximately 40% each year (Table 23).
- About one-third of the returns to prison for violating conditions of parole between 2016 and 2019 started the violation process with a technical warrant (Table 23).

TABLE 16: PAROLEES REMOVED FROM COMMUNITY SUPERVISION: 2010-2019

	2010	2011	2012	2013	2014	2015	2016	2017	2018	2019
Removals from Community Supervision										
Returned Rule Violations	7,546	7,427	7,479	7,321	6,612	6,401	6,362	5,872	5,787	5,233
<i>ALT 90 Day</i>	1,403	1,696	1,689	1,780	1,726	1,734	1,882	1,734	1,522	1,680
<i>ALT 45 Day</i>	138	63	124	183	164	94	175	196	129	124
Total Returned Rule Violations	9,087	9,186	9,292	9,284	8,502	8,229	8,419	7,802	7,438	7,037
<i>Rule Violations Percent of Total Removals</i>	36%	38%	39%	40%	39%	40%	40%	38%	37%	35%
Returned New Felony Convictions	1,538	1,496	1,363	1,406	1,401	1,275	1,319	1,322	1,330	1,256
<i>New Felony Percent of Total Removals</i>	6%	6%	6%	6%	6%	6%	6%	6%	7%	6%
Total Returned to Prison	10,625	10,682	10,655	10,690	9,903	9,504	9,738	9,124	8,768	8,293
<i>Returned Percent of Total Removals</i>	42%	44%	45%	46%	46%	46%	46%	44%	43%	41%
Discharged From Supervision	11,837	10,917	10,336	10,326	9,878	9,406	9,460	9,506	9,188	9,227
Merit Termination	1,964	2,276	2,496	2,100	1,846	1,726	1,811	1,871	2,363	2,489
Mandatory Termination	853	543	258	163	127	87	69	49	34	35
Total Discharges	14,654	13,736	13,090	12,589	11,851	11,219	11,340	11,426	11,585	11,751
<i>Discharge Percent of Total Removals</i>	58%	56%	55%	54%	54%	54%	54%	56%	57%	59%
GRAND TOTAL REMOVALS	25,279	24,418	23,745	23,279	21,754	20,723	21,078	20,550	20,353	20,044

**TABLE 17: PAROLEES RETURNED TO PRISON: 2010 to 2019
AS A PROPORTION OF THE PAROLEE DYNAMIC POPULATION**

Return Reason	2010	2011	2012	2013	2014	2015	2016	2017	2018	2019
New Court Conviction	1,538	1,496	1,363	1,406	1,401	1,275	1,319	1,322	1,330	1,256
	2.7%	2.7%	2.6%	2.7%	2.7%	2.5%	2.6%	2.6%	2.6%	2.5%
Violating Conditions of Parole¹	9,087	9,186	9,292	9,284	8,502	8,228	8,419	7,802	7,438	7,037
	16.1%	16.8%	17.4%	17.7%	16.6%	16.4%	16.7%	15.5%	14.7%	14.2%
Total Prison Returns During Year	10,625	10,682	10,655	10,690	9,903	9,503	9,738	9,124	8,768	8,293
	18.9%	19.6%	20.0%	20.4%	19.3%	18.9%	19.3%	18.1%	17.3%	16.7%
Dynamic Population²	56,267	54,553	53,284	52,307	51,274	50,254	50,403	50,424	50,545	49,651

¹ Included in the number of offenders returned for violating conditions of Parole are cases ordered to the Department's Alternative 90 and Alternative 45 day programs. The number of Alt 90 entrants was 1,403 for 2010; 1,696 for 2011; 1,689 for 2012; 1,781 for 2013; 1,726 for 2014; 1,734 for 2015; 1,882 for 2016; and 1,734 for 2017. The number of Alt 45 entrants was 30 for 2008; 172 for 2009; 138 for 2010; 63 for 2011; 124 for 2012; 183 for 2013; 164 for 2014; 94 for 2015; 175 for 2016, 196 for 2017, 129 for 2018, and 124 for 2019.

² The dynamic population reflects the number of people who spent at least some time under active supervision (start of year active population plus all releases to supervision) over the course of the year.

**TABLE 18: PAROLEES RETURNED TO PRISON AS NEW COMMITMENTS: 2010 TO 2019
ORIGINAL CRIME OF COMMITMENT**

Year	A-I Violent and Legislative VFO		Other Coercive		Drug Offenses		Major Property		Other Felony		Youthful Offenders		Total	
	Number	Percent	Number	Percent	Number	Percent	Number	Percent	Number	Percent	Number	Percent	Number	Percent
2010	631	41%	70	5%	493	32%	248	16%	51	3%	45	3%	1,538	100%
2011	599	40%	57	4%	470	31%	257	17%	69	5%	44	3%	1,496	100%
2012	583	43%	61	4%	386	28%	230	17%	75	6%	28	2%	1,363	100%
2013	652	46%	68	5%	380	27%	200	14%	70	5%	36	3%	1,406	100%
2014	643	46%	54	4%	349	25%	255	18%	64	5%	36	3%	1,401	100%
2015	585	46%	69	5%	317	25%	206	16%	53	4%	45	4%	1,275	100%
2016	663	50%	64	5%	271	21%	216	16%	74	6%	31	2%	1,319	100%
2017	668	51%	75	6%	309	23%	189	14%	60	5%	21	2%	1,322	100%
2018	664	50%	79	6%	296	22%	196	15%	58	4%	37	3%	1,330	100%
2019	608	48%	54	4%	313	25%	188	15%	67	5%	26	2%	1,256	100%

TABLE 19: ORIGINAL COMMITMENT OFFENSE OF NEW FELONY RETURNS TO PRISON: 2015 TO 2019

COMMITMENT OFFENSE	2015		2016		2017		2018		2019	
	NUMBER	PERCENT	NUMBER	PERCENT	NUMBER	PERCENT	NUMBER	PERCENT	NUMBER	PERCENT
A-I VIOLENT OFFENSES										
Murder, Murder 1st & 2nd, Att. Murder 1st	7	1%	13	1%	10	1%	11	1%	10	1%
Kidnapping 1st	0	--	1	<1%	0	--	0	--	0	--
Arson 1st	0	--	0	--	0	--	0	--	0	--
TOTAL A-I Violent	7	1%	14	1%	10	1%	11	1%	10	1%
LEGISLATIVE VFO										
Attempted Murder 2nd	8	1%	6	<1%	13	1%	12	1%	10	1%
Manslaughter 1st	8	1%	13	1%	12	1%	10	1%	5	<1%
Rape 1st	6	<1%	2	<1%	9	1%	4	<1%	8	1%
Robbery 1st	95	7%	95	7%	87	7%	88	7%	75	6%
Robbery 2nd	109	9%	127	10%	110	8%	121	9%	99	8%
Assault 1st	28	2%	20	2%	48	4%	34	3%	31	2%
Other Assault	64	5%	59	4%	47	4%	60	5%	51	4%
Burglary 1st	14	1%	15	1%	14	1%	15	1%	12	1%
Burglary 2nd	126	10%	159	12%	146	11%	147	11%	147	12%
Attempted Arson 1st, Arson 2nd	1	<1%	2	<1%	1	<1%	2	<1%	2	<1%
Sodomy 1st	1	<1%	2	<1%	2	<1%	2	<1%	1	<1%
Sexual Abuse	9	1%	11	1%	8	1%	10	1%	11	1%
Weapons Offense	109	9%	134	10%	158	12%	145	11%	142	11%
Terrorism/False Bombing	0	--	1	<1%	1	<1%	0	--	1	<1%
Attempted Kidnapping 1st, Kidnapping 2nd	0	--	3	<1%	2	<1%	3	<1%	3	0%
TOTAL Legislative VFO	578	45%	649	49%	658	50%	653	49%	598	48%
OTHER COERCIVE										
Manslaughter 2nd	0	--	1	<1%	2	<1%	2	<1%	3	<1%
Other Homicide	0	--	0	--	0	--	2	<1%	0	--
Robbery 3rd	41	3%	31	2%	45	3%	40	3%	24	2%
Attempted Assault 2nd	9	1%	12	1%	12	1%	7	1%	5	<1%
Other Sex Offenses	9	1%	6	<1%	8	1%	10	1%	8	1%
Other Coercive	10	1%	14	1%	8	1%	18	1%	14	1%
TOTAL Other Coercive	69	5%	64	5%	75	6%	79	6%	54	4%
DRUG OFFENSES										
Drug Sale	165	13%	148	11%	137	10%	144	11%	150	12%
Drug Possession	152	12%	123	9%	172	13%	152	11%	163	13%
TOTAL Drug Offenses	317	25%	271	21%	309	23%	296	22%	313	25%
MAJOR PROPERTY										
Burglary 3rd	103	8%	110	8%	100	8%	106	8%	104	8%
Grand Larceny	52	4%	58	4%	51	4%	53	4%	52	4%
Forgery	23	2%	26	2%	16	1%	18	1%	18	1%
Stolen Property	28	2%	22	2%	22	2%	19	1%	14	1%
TOTAL Major Property	206	16%	216	16%	189	14%	196	15%	188	15%
OTHER FELONY										
Driving While Intoxicated	16	1%	16	1%	17	1%	16	1%	12	1%
Non-Violent Weapons Offense	17	1%	16	1%	13	1%	9	1%	13	1%
All Other Felonies	20	2%	42	3%	30	2%	33	2%	42	3%
TOTAL Other Felony	53	4%	74	6%	60	5%	58	4%	67	5%
YOUTHFUL										
Youthful Offenders	45	4%	31	2%	21	2%	37	3%	26	2%
TOTAL YO	45	4%	31	2%	21	2%	37	3%	26	2%
GRAND TOTAL	1,275	100%	1,319	100%	1,322	100%	1,330	100%	1,256	100%

**TABLE 20: PAROLEES RETURNED TO PRISON FOR RULE VIOLATIONS: 2010 TO 2019
ORIGINAL CRIME OF COMMITMENT**

Calendar Year	A-I Violent and Legislative VFO		Other Coercive		Drug Offenses		Major Property		Other Felony		Youthful Offenders		Total	
	Number	Percent	Number	Percent	Number	Percent	Number	Percent	Number	Percent	Number	Percent	Number	Percent
2010	3,268	36%	642	7%	3,045	34%	1,328	15%	534	6%	270	3%	9,087	100%
2011	3,487	38%	586	6%	2,886	31%	1,373	15%	575	6%	279	3%	9,186	100%
2012	3,889	42%	620	7%	2,539	27%	1,319	14%	614	7%	311	3%	9,292	100%
2013	4,078	44%	719	8%	2,186	24%	1,385	15%	625	7%	291	3%	9,284	100%
2014	3,865	45%	629	7%	1,832	22%	1,321	16%	597	7%	258	3%	8,502	100%
2015	3,856	47%	611	7%	1,589	19%	1,324	16%	579	7%	269	3%	8,228	100%
2016	4,082	48%	614	7%	1,541	18%	1,366	16%	586	7%	230	3%	8,419	100%
2017	3,686	47%	641	8%	1,371	18%	1,290	17%	582	7%	232	3%	7,802	100%
2018	3,484	47%	608	8%	1,262	17%	1,261	17%	635	9%	188	3%	7,438	100%
2019	3,197	45%	607	9%	1,146	16%	1,226	17%	675	10%	186	3%	7,037	100%

TABLE 21: ORIGINAL COMMITMENT OFFENSE OF RULE RETURNS TO PRISON: 2015 TO 2019

COMMITMENT OFFENSE	2015		2016		2017		2018		2019	
	NUMBER	PERCENT	NUMBER	PERCENT	NUMBER	PERCENT	NUMBER	PERCENT	NUMBER	PERCENT
A-I VIOLENT OFFENSES										
Murder, Murder 1st & 2nd, Att. Murder 1st	53	1%	84	1%	63	1%	57	1%	60	1%
Kidnapping 1st	1	<1%	1	<1%	2	<1%	2	<1%	1	<1%
Arson 1st	0	--	2	<1%	0	--	1	<1%	0	<1%
TOTAL A-I Violent	54	1%	87	1%	65	1%	60	1%	61	1%
LEGISLATIVE VFO										
Attempted Murder 2nd	48	1%	53	1%	46	1%	38	1%	36	1%
Manslaughter 1st	68	1%	66	1%	61	1%	43	1%	42	1%
Rape 1st	128	2%	110	1%	119	1%	110	1%	92	1%
Robbery 1st	457	6%	482	6%	422	5%	375	5%	359	5%
Robbery 2nd	768	9%	749	9%	630	7%	549	7%	489	7%
Assault 1st	155	2%	132	2%	127	2%	134	2%	112	2%
Other Assault	368	4%	402	5%	343	4%	353	5%	325	5%
Burglary 1st	88	1%	92	1%	85	1%	77	1%	76	1%
Burglary 2nd	760	9%	823	10%	814	10%	799	11%	700	11%
Attempted Arson 1st, Arson 2nd	24	<1%	24	<1%	23	<1%	22	<1%	18	<1%
Sodomy 1st	66	1%	80	1%	79	1%	75	1%	62	1%
Sexual Abuse	245	3%	299	4%	286	3%	291	4%	261	4%
Weapons Offense	606	7%	667	8%	570	7%	551	7%	543	7%
Terrorism/False Bombing	8	<1%	4	<1%	2	<1%	1	<1%	5	<1%
Attempted Kidnapping 1st, Kidnapping 2nd	13	<1%	12	<1%	14	<1%	6	<1%	16	<1%
TOTAL Legislative VFO	3,802	46%	3,995	47%	3,621	46%	3,424	46%	3,136	46%
OTHER COERCIVE										
Manslaughter 2nd	11	<1%	11	<1%	8	<1%	11	<1%	6	<1%
Other Homicide	3	<1%	10	<1%	6	<1%	8	<1%	8	<1%
Robbery 3rd	240	3%	250	3%	262	3%	251	3%	251	3%
Attempted Assault 2nd	113	1%	101	1%	86	1%	90	1%	84	1%
Other Sex Offenses	175	2%	169	2%	213	3%	184	2%	163	2%
Other Coercive	69	1%	73	1%	66	1%	64	1%	95	1%
TOTAL Other Coercive	611	7%	614	7%	641	8%	608	8%	607	8%
DRUG OFFENSES										
Drug Sale	971	12%	923	11%	753	9%	680	9%	614	9%
Drug Possession	618	8%	618	7%	618	7%	582	8%	532	8%
TOTAL Drug Offenses	1,589	19%	1,541	18%	1,371	18%	1,262	17%	1,146	17%
MAJOR PROPERTY										
Burglary 3rd	684	8%	653	8%	612	7%	616	8%	634	8%
Grand Larceny	365	4%	408	5%	389	5%	369	5%	335	5%
Forgery	125	2%	160	2%	159	2%	136	2%	125	2%
Stolen Property	150	2%	145	2%	130	2%	140	2%	132	2%
TOTAL Major Property	1,324	16%	1,366	16%	1,290	17%	1,261	17%	1,226	17%
OTHER FELONY										
Driving While Intoxicated	114	1%	129	2%	109	1%	129	2%	114	2%
Non-Violent Weapons Offense	100	1%	94	1%	108	1%	120	2%	120	2%
All Other Felonies	365	4%	363	4%	365	4%	386	5%	441	5%
TOTAL Other Felony	579	7%	586	7%	582	7%	635	9%	675	9%
YOUTHFUL OFFENDERS										
Youthful Offenders	269	3%	230	3%	232	3%	188	3%	186	3%
TOTAL YO	269	3%	230	3%	232	3%	188	3%	186	3%
GRAND TOTAL	8,228	100%	8,419	100%	7,802	100%	7,438	100%	7,037	100%

TABLE 22: PAROLEES RETURNED TO PRISON DURING 2019 BY SUPERVISION LEVEL

Supervision Level	Return Reason						Supervision Level for Parolees in the Community December 31, 2019	
	New Court Conviction		Violating Conditions of Parole		Total			
Supervision Level	Number	Percent	Number	Percent	Number	Percent		
1 (25:1)	496	39%	3,334	47%	3,830	46%	1 (25:1)	31%
2 (40:1)	246	20%	1,538	22%	1,784	22%	2 (40:1)	13%
3 (80:1)	321	26%	1,511	21%	1,832	22%	3 (80:1)	25%
4 (160:1)	191	15%	618	9%	809	10%	4 (160:1)	30%
Pending	2	<1%	36	1%	38	0%	Pending	1%
TOTAL	1,256	100%	7,037	100%	8,293	100%	TOTAL	100%

TABLE 23: PAROLEES RETURNED TO PRISON FOR VIOLATING CONDITIONS OF PAROLE BY WARRANT TYPE: 2016 - 2019

Year	Type of Warrant							
	Absconder		New Arrest		Technical		TOTAL	
Year	Number	Percent	Number	Percent	Number	Percent	Number	Percent
2016	3,548	42%	2,300	27%	2,571	31%	8,419	100%
2017	3,189	41%	2,196	28%	2,417	31%	7,802	100%
2018	2,982	40%	2,059	28%	2,397	32%	7,438	100%
2019	3,023	43%	1,949	28%	2,052	29%	7,024	100%
TOTAL	9,194	41%	6,204	28%	6,866	31%	22,264	100%

Note: Absconders are sometimes apprehended as a result of a new arrest and technical warrants may also be related to an arrest, therefore, new arrest warrants are not the only warrant type associated with misdemeanor and felony arrest activity.

Section 5 – Parolees Supervised Out-of-State

- At the end of 2019, there were 1,561 parolees from New York who were being actively supervised out-of-state under the Interstate Compact (Table 24).
- Between 2015 and 2019, the number of parolees being supervised out-of-state increased by 187 or 14% (Table 24).
- Between 2018 and 2019, the number of parolees supervised out-of-state increased by 49 or 3% (Table 24).
- During 2019, 554 parolees were transferred out of New York to complete their community supervision under the Interstate Compact. This was an increase of 25% from the 442 transfers in 2018.

**TABLE 24: PAROLEES SUPERVISED OUT-OF-STATE
UNDER THE INTERSTATE COMPACT
December 31, 2019**

2015	2016	2017	2018	2019
1,374	1,479	1,488	1,512	1,561

Section 6 – Parolees Supervised from Other States

- At the end of 2019, there were 1,114 parolees from other states who were being actively supervised in New York under the Interstate Compact (Table 25).
- Between 2015 and 2019, the number of parolees from other states being supervised decreased by 77 or 6% (Table 25).
- During 2019, 535 parolees were transferred from other states to New York to complete their community supervision under the Interstate Compact. This was a decrease of 13 or 2% from the 548 transfers in 2018.
- The majority of parolees from other states (58%) are supervised as Level 3 and 4 (Table 26).

**TABLE 25: PAROLEES FROM OTHER STATES SUPERVISED IN NEW YORK UNDER THE INTERSTATE COMPACT
December 31, 2019**

2015	2016	2017	2018	2019
1,191	1,185	1,194	1,193	1,114

**TABLE 26: PAROLEES FROM OTHER STATES SUPERVISED IN NEW YORK BY COMPAS SUPERVISION LEVEL
December 31, 2019**

Supervision Level	Number	Percent
1 (25:1)	181	16%
2 (40:1)	110	10%
3 (80:1)	193	17%
4 (160:1)	455	41%
Pending	175	16%
TOTAL	1,114	100%

*Percentage total may not equal 100% due to rounding.

***Prepared by:
Program Planning, Research & Evaluation***